

Pei Chun Public School
Semestral Assessment 1 – 2009
Mathematics
Primary 4

Booklet A

Name: _____ ()

Date: 14 May 2009

Class: Primary 4 ____

Time: 2 h

Maths Teacher: _____

Questions 1 to 12 carry 2 marks each. For each question, four options are given. One of them is the correct answer. Make your choice (1, 2, 3 or 4) and write its number in the brackets provided. (24 marks)

1. The value of the digit 7 in 27 015 is _____.

(1) 70

(2) 700

(3) 7000

(4) 70 000

()

2. 30 918 rounded off to the nearest hundred is _____.

(1) 31 000

(2) 30 910

(3) 30 900

(4) 30 000

()

3. The best estimate of the height of the metal cupboard in the classroom is _____.

(1) 2 m

(2) 2 cm

(3) 20 m

(4) 20 cm

()

177

4. Which of the following is a common factor of 18 and 24?

~~(1)~~ 6

~~(2)~~ 8

~~(3)~~ 9

~~(4)~~ 12

()

5. The difference between the 3rd and 7th multiple of 4 is _____.

~~(1)~~ 40

~~(2)~~ 16

~~(3)~~ 10

~~(4)~~ 4

()

6. Find the product of 3096 and 6.

~~(1)~~ 516

~~(2)~~ 3090

~~(3)~~ 3102

~~(4)~~ 18 576

()

7. There are 240 straws in a box. How many straws are there in 16 such boxes?

~~(1)~~ 3840

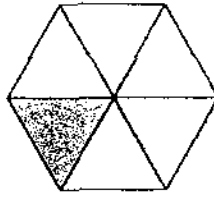
~~(2)~~ 1680

~~(3)~~ 384

~~(4)~~ 168

()

8. The figure below is made up of 6 identical triangles. One of them is shaded. How many **more** of the triangles must be shaded so that $\frac{2}{3}$ of the figure is shaded?



- (1) 1
 (2) 2
 (3) 3
 (4) 4

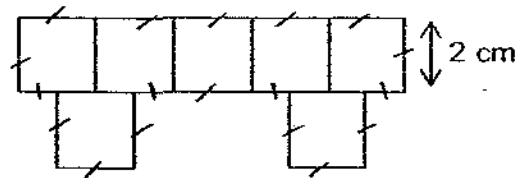
()

9. There are 26 rows of chairs in a hall. In each row, there are 48 chairs. 609 of the chairs are blue and the rest are grey. How many chairs are grey?

- (1) 535
 (2) 639
 (3) 1248
 (4) 1857

()

10. 7 identical squares are arranged to form the figure below.

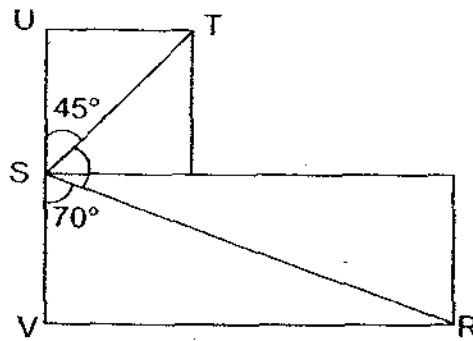


Find the perimeter of the figure.

- (1) 7 cm
 (2) 16 cm
 (3) 28 cm
 (4) 32 cm

()

11. The figure below is made up of a rectangle and a square. USV is a straight line.



Find $\angle RST$.

- (1) 20°
 (2) 65°
 (3) 115°
 (4) 160°

()

12. Each symbol below represents one of the numbers, 1, 2, 3 or 4.

$$\begin{array}{r}
 \text{Smiley} + \text{Smiley} + \text{Flower} = 8 \\
 \text{Star} + \text{Smiley} + \text{Leaf} = 8 \\
 \text{Flower} + \text{Flower} + \text{Leaf} = 8
 \end{array}$$

Which one of the following numbers represents the symbol  ?

- (1) 1
 (2) 2
 (3) 3
 (4) 4

()

13. Refer to Booklet K.

14. Refer to Booklet K.

15. Refer to Booklet K.

End of Booklet A

180

Pei Chun Public School
Semestral Assessment 1 – 2009
Mathematics
Primary 4

Booklet B

Name : _____ ()

Marks :

Class : Primary 4 _____

Date : 14 May 2009

Time : 2 h

Maths Teacher : _____

Parent's Signature : _____

Booklet A	24
Booklet B	56
Booklet K Q13-15, Q28-30, Q39-40	20
TOTAL	100

Questions 16 to 27 carry 2 marks each. Show your working clearly in the space below each question and write your answers in the spaces provided.

Do not write in this space

For questions which require units, give your answers in the units stated.

(24 marks)

16. Write 98 043 in words.

17. Complete the number pattern below.

25 306 , 25 156 , 25 006 , _____ , 24 706

Ans : _____

SCORE

18

18. Find the difference between 70 521 and 9034.

Do not wr
in this sp.

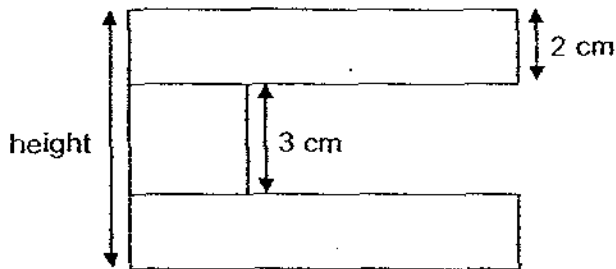
Ans : _____

19. The figure below shows six marked angles. How many of the marked angles are greater than a right angle?



Ans : _____

20. The figure below is made up of 2 identical rectangles and a square. Find the height of the figure.



Ans : _____ cm

21. Find the value of $10\frac{4}{9} - \frac{2}{3}$.

Express your answer as a mixed number.

Ans : _____

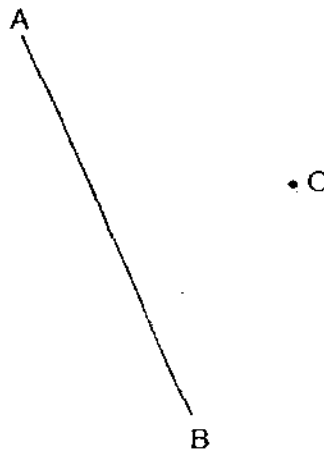
SCORE

182

22. Miss Azizah bought a pack of files. $\frac{5}{8}$ of them are pink and the rest are blue. If there are 18 blue files in the pack, how many files did she buy?

Ans : _____

23. Draw a line parallel to AB passing through point C. Draw arrowheads to show that the lines are parallel.



24. There are 6 lollipops in a packet and 8 chocolate bars in a box. What is the smallest number of packets of lollipops and boxes of chocolate Rui Qi must buy so that he has an equal number of lollipops and chocolate bars?

Ans : _____ packets of lollipops
_____ boxes of chocolate

25. 108 boys and 126 girls from 6 classes went on an excursion. There was an equal number of pupils in each class. How many pupils were there in each class?

Do not write in this space

Ans : _____

26. The area of a square is 49 cm^2 . A rectangle is three times as long and twice as wide as the square. What is the area of the rectangle?

Ans : _____ cm^2

27. A carpenter takes 84 seconds to cut a plank of wood into 7 equal pieces. How many seconds does it take the carpenter to cut an identical plank of wood into 9 equal pieces?

Ans : _____ s

28. Refer to Booklet K.

29. Refer to Booklet K.

30. Refer to Booklet K.

SCORE

184

Questions 31 to 38 carry 4 marks each. Show your working clearly in the space below each question and write your answers in the spaces provided. (32 marks)

Do not
in this :

-
31. Katie used 152 beads to make 4 bracelets. She used an equal number of beads for each bracelet. How many beads would she need to make 9 more such bracelets?

Ans : _____ [4]

SCORE

185

32. Azman has three times as many stickers as Bala. Bala has 68 stickers fewer than Azman but 21 stickers more than Caili. How many stickers do the three of them have altogether?

Do not v
in this sj

Ans : _____ [4]

SCORE

186

33. The total mass of a basket containing a bag of rice and 2 identical cans of tuna is 6 kg 170 g. The mass of the bag of rice is 5 kg. The empty basket has a mass of 800 g. What is the mass of a can of tuna? Give your answer in g.

Do not w
in this sp

Ans : _____ [4]

SCORE

187

34. Josephine jogs from 5.40 pm to 6.15 pm every evening from Monday to Friday. She jogs for 30 minutes on Saturday morning. How many hours and minutes does she jog from Monday to Saturday?

Do not v
in this s

Ans : _____ [4]

35. A bottle contained 2 l of lemonade. Rajoo drank $\frac{1}{5}$ of it and then Kala drank $\frac{3}{10}$ l of it. How much lemonade was left?

Do not w
in this sp

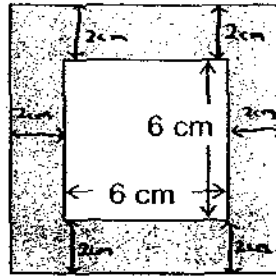
Ans : _____ [4]

SCORE

189

36. Some 2-cm square tiles are arranged, without overlapping, to make the shaded figure as shown below.

Do not v
in this st



- (a) How many 2-cm square tiles are used to make the shaded figure?
- (b) Find the area of the shaded figure.

Ans : (a) _____ [1]

Ans : (b) _____ [3]

SCORE

37. John bent a piece of wire to make a rectangle as shown in Figure A. He then used the same piece of wire to make a square as shown in Figure B. Find the area of the square.

Do not write in this space.

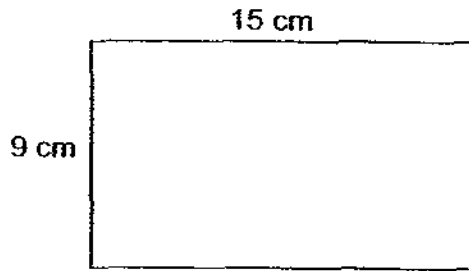


Figure A

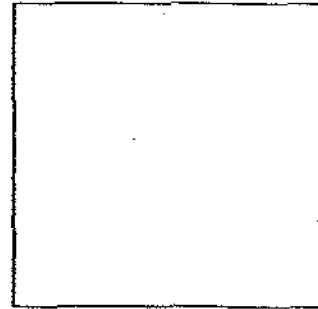


Figure B

Ans: _____ [4]

--

Do not v
in this s1

38. There are 315 English, Chinese and Malay books in a class library altogether. The number of Malay books is $\frac{3}{4}$ of the number of English books. There are 15 fewer Chinese books than English books. How many Chinese books are there?

Ans : _____ [4]

39. Refer to Booklet K.

40. Refer to Booklet K.

End of Booklet B

Set by : Mdm Nora
Veltd by: P4 Maths Committee Teachers

MA / P4 / SA1 / 2009

Page 12 of 12

SCORE

192

ANSWER SHEET

EXAM PAPER 2009

SCHOOL : PEI CHUN PRIMARY
SUBJECT : PRIMARY 4 MATHEMATICS

TERM : SA1

Q1	Q2	Q3	Q4	Q5	Q6	Q7	Q8	Q9	Q10	Q11	Q12
3	3	1	1	2	4	1	3	2	4	2	2

16) Ninety-eight thousand and forty-three

17) 24856

18) 61487

19) 4

20) 7cm

21) $\frac{97}{9}$

22) 48 files

23) A

24) 4, 3

25) 39 pupils

26) 294cm²

27) 112

31) Each bracelet $\rightarrow 152 \div 4 = 38$

9 bracelet $\rightarrow 38 \times 9 = 342$ beads.

32) 2 unit $\rightarrow 68$

1 unit $\rightarrow 68 \div 2 = 34$

Caili $\rightarrow 34 - 21 = 13$

Total $\rightarrow 13 + (34 \times 4)$

$= 13 + 136 = 149$ stickers.

33) Total mass $\rightarrow 6\text{kg } 170\text{g}$

Mass of basket and 2 cans of tuna $\rightarrow 6\text{kg } 170\text{g} - 5\text{kg} = 1\text{kg } 170\text{g}$

Mass of two cans of tuna $\rightarrow 1\text{kg } 170\text{g} - 800\text{g} = 1170\text{g} - 800 = 370\text{g}$

Mass of a can of tuna $\rightarrow 370 \div 2 = 185\text{g}$.

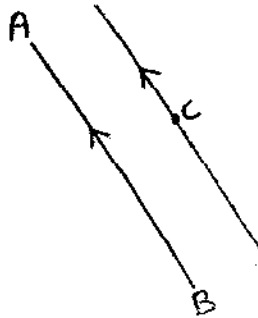
34) 5.40 \rightarrow 6.15 is 35min

35min $\times 5 = 175$

175 = 2h 55min

2h 55min + 30 min = 2h 85min

2h 85min = 3h 25min.



**35) Amount drunk by Rajoo $\rightarrow 1/5 \times 2 = 2/5$
Amount drunk (total) $\rightarrow 2/5 + 3/10 = 7/10$
Amount left $\rightarrow 2 - 7/10 = 13/10$**

**36) a) Number of tiles used $\rightarrow (6 \div 2) \times 4 + 4 = 16$
b) Length of side $\rightarrow 6 + 2 + 2 = 10$
Area of shaded part $\rightarrow (10 \times 10) - (6 \times 6) = 64 \text{ cm}^2$**

**37) Perimeter of Figure A $\rightarrow 9 + 9 + 15 + 15 = 18 + 30$
 $= 48 \rightarrow$ perimeter of wire
One side of the square $\rightarrow 48 \div 4 = 12$
Area of square $\rightarrow 12 \times 12 = 144 \text{ cm}^2$**

**38) 11 units $\rightarrow 315 + 15 = 330$
1 unit $\rightarrow 330 \div 11 = 30$
Number of ELB $\rightarrow 30 \times 4 = 120$
Number of Chinese books $\rightarrow 120 - 15 = 105$ Chinese books.**