



MAHA BODHI SCHOOL
2009 CONTINUAL ASSESSMENT 1
SCIENCE

Name: _____ ()

Date: 5 March 2009

Class: P3 ()

Duration: 1 h 15 min (Parts I & II)

Part I: (30 marks)

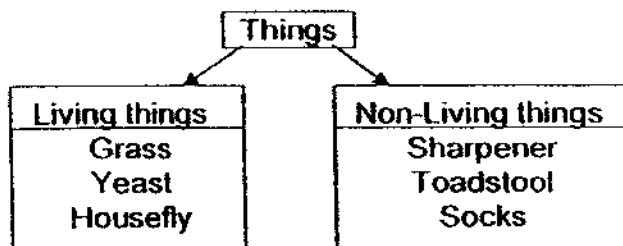
For each question from 1 to 15, four options are given. One of them is the correct answer.

Make your choice (1, 2, 3 or 4). Shade the correct answer (1, 2, 3 or 4) on the Optical Mark Sheet.

1. Which part of the plant is usually found below the ground?

- (1) Fruits
- (2) Stems
- (3) Roots
- (4) Flowers

2. Study the diagram below.



Which one of the following is not grouped correctly?

- (1) Yeast
- (2) Grass
- (3) Sharpener
- (4) Toadstool

3. The table shows how some fruits have been grouped.

Group A	Group B
Watermelon	Lychee
Guava	Mango
Papaya	Rambutan
Cucumber	Longan
Chili	Coconut

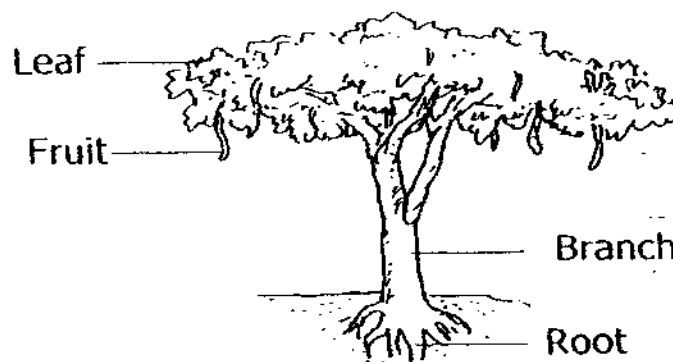
Which one of the following correctly shows the characteristics of Group A and Group B?

	Group A	Group B
(1)	Edible fruits	Inedible fruits
(2)	Large fruits	Small fruits
(3)	Fruits of land plants	Fruits of water plants
(4)	Fruits with many seeds	Fruits with one seed

4. Which one of the following is a non-flowering plant?

- (1) Ixora
- (2) Hibiscus
- (3) Mimosa plant
- (4) Maidenhair fern

5. The diagram below shows a raintree.



Which part of the raintree is not labelled correctly?

- (1) Fruit
- (2) Leaf
- (3) Root
- (4) Branch

6. Which of the following statements about plants are correct?

- A: They need air.
- B: They do not die.
- C: They do not need sunlight to survive.
- D: They respond to changes around them.

- (1) A and B
- (2) B and C
- (3) A and D
- (4) C and D

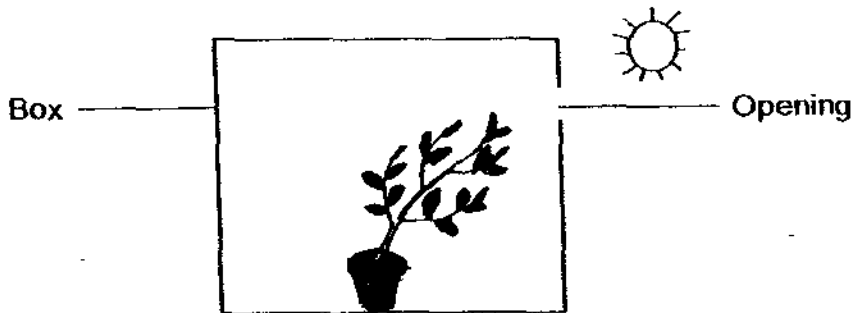
7. The table below shows two groups of flowers

Group A	Group B
Angsana	Water lily
Ixora	Hibiscus
Frangipani	Morning glory

The flowers are classified according to _____

- (1) the colours of their petals
- (2) the number of petals in each flower
- (3) whether they grow singly or in bunches
- (4) whether they have big petals or small petals

8. Study the diagram below.



Based on the picture, the aim of the experiment is to show that plants

- (1) need air
- (2) can reproduce
- (3) can respond to light
- (4) need food and water

9. The following table shows David's height over several years.

Age (Years)	Height (Centimetres)
3	80
5	100
7	120
9	130

What can David conclude about the information in the table above?

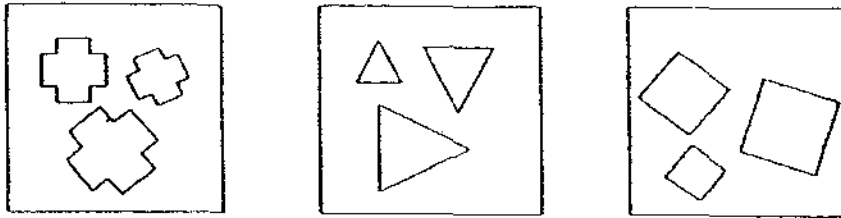
- (1) He can grow.
 - (2) He can move.
 - (3) He can reproduce.
 - (4) He can respond to his surroundings.
10. Sue classified some items into three groups.

Group X	Group Y	Group Z
Desks	Oven	Bed
Whiteboards	Sink	Cupboard
Wastepaper Basket	Refrigerator	Lamp

Sue has grouped the items according to _____.

- (1) whether they were once alive
 - (2) the places where they are found in
 - (3) whether they are living or non-living things
 - (4) All of the above
11. Vanessa has a pot of sunflower plant and a pot of artificial sunflower plant (made of plastic).
Which one of the following steps is **incorrect** to find out whether the plants are living things?
- (1) Leave them in the sun for a day.
 - (2) Leave them without water for a week.
 - (3) Count the number of leaves they have after a month.
 - (4) Check for wilting or dying flowers and leaves after one week.

12. The diagram below shows three different groups of objects.



The objects above are grouped according to their _____.

- A: Sizes
- B: Shapes
- C: Colours

- (1) A only
- (2) B only
- (3) A and C
- (4) B and C

13. John compared the properties of four different plants in a table.

Property	Rose	Lotus	Hibiscus	Orchid
Does it have flowers?	No	Yes	Yes	Yes
Does it live on land?	Yes	No	Yes	Yes
Is it poisonous?	Yes	No	No	No

Which one of the living things has properties that are not correct?

- (1) Rose
- (2) Lotus
- (3) Orchid
- (4) Hibiscus

14. Study the two groups of animals listed below.

Group M	Group N
Ant	Elephant
Butterfly	Monkey
Mosquito	Cat

Which of the following sets are suitable headings for Group M and Group N?

	Group M	Group N
A	Insects	Mammals
B	Land Animals	Sea Animals
C	Small Animals	Big Animals

- (1) A and B only
- (2) A and C only
- (3) B and C only
- (4) A, B and C

15. The diagram below shows four different things, A, B, C and D.

A.



B.



C.



D.



Which of the following are living things?

- (1) A and B only
- (2) C and D only
- (3) B and D only
- (4) A and C only

End of Part One



MAHA BODHI SCHOOL
2009 CONTINUAL ASSESSMENT 1
SCIENCE

Name: _____ ()

Class: P3 ()

Duration: 1 h 15 min (Part I & II)

Date: 5 March 2009

Parent's Signature: _____

Part I	(30 marks)	
Part II	(20 marks)	
Part I & II	(50 marks)	
CA1	(100 marks)	

Part II: (20 marks)

Write your answers to questions 16 to ²⁴~~25~~ in this script.

16. The diagrams below show two fruits, A and B.



Fruit A

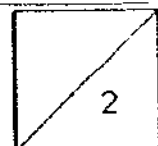


Fruit B

State one similarity and one difference between Fruit A and Fruit B. [2]
(Do not compare their colours or sizes)

Similarity : _____

Difference : _____



17. The diagrams below show four leaves, W, X, Y and Z.



Leaf W



Leaf X



Leaf Y



Leaf Z

The leaves above can be classified into two groups. Write down suitable headings in the boxes below on how you could group the leaves. [2]

(a)



W and Y

X and Z

(b)

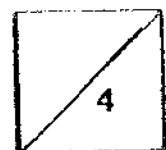
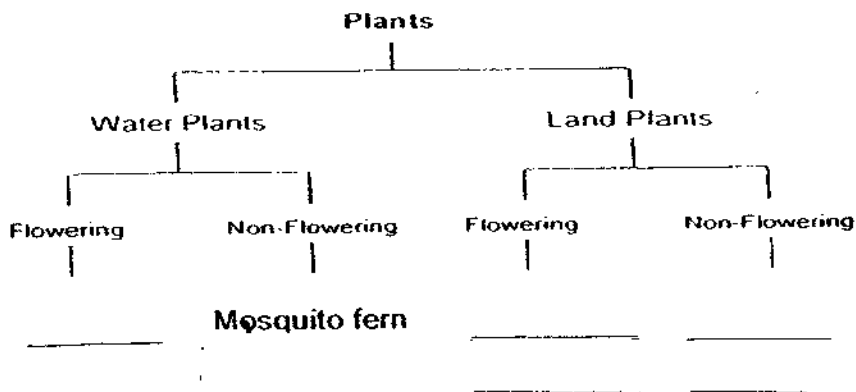


W and Z

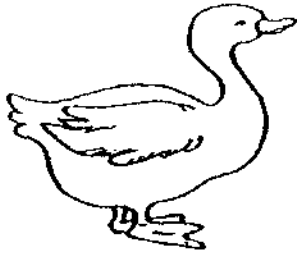
X and Y

18. Fill in the chart below with the correct names of the plants given [2]

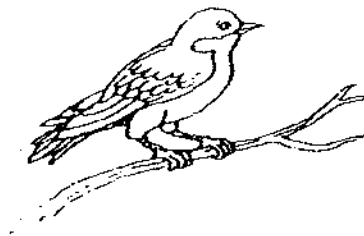
Rose	Tree fern	Water lily
Moss	Water hyacinth	



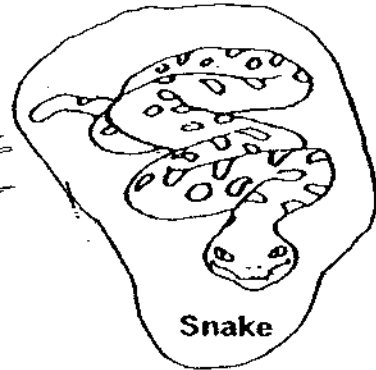
19. Look at the things in the group. Circle the thing that should not be in the group. Then fill in the blanks to explain why. [2]



Duck



Bird



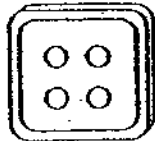
Snake

The _____ should not be in the group. It has no _____

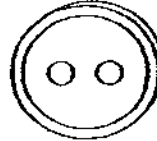
20. Classify the four buttons using the classification chart below. Write the letters of the buttons, (A, B, C and D) on the lines, and suitable headings in the boxes provided. Each letter could be used more than once. [1]



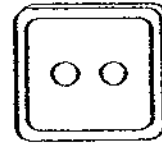
A



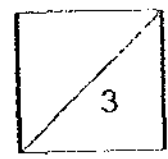
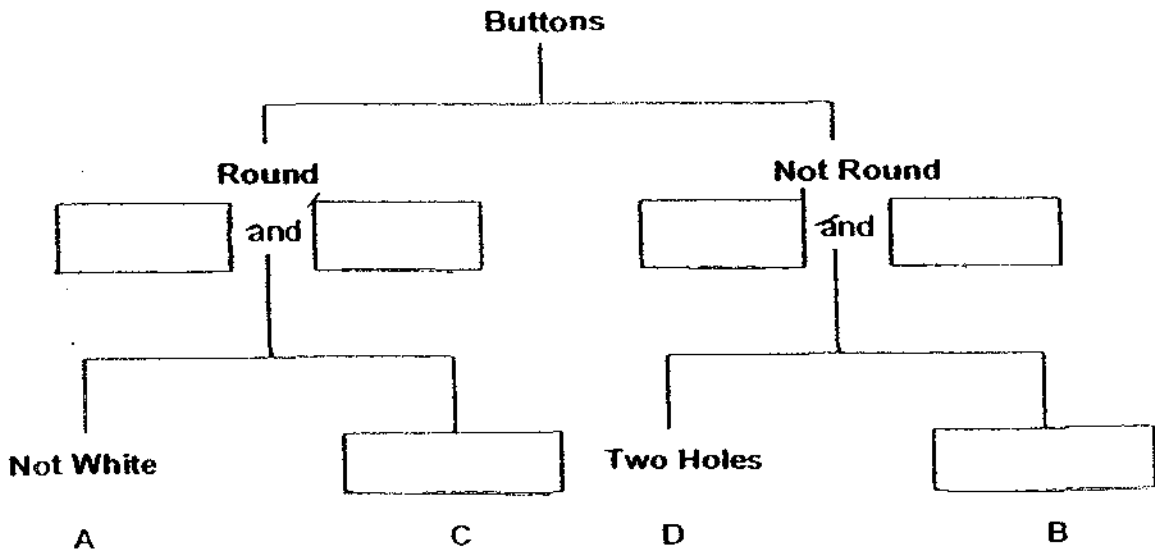
B



C



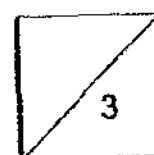
D



21. Complete the table with the suitable words given below. Use each word only once. [3]

Bird's Nest Fern	Sunflower	Pong Pong Tree
Ixora	Venus flytrap	Mango Tree

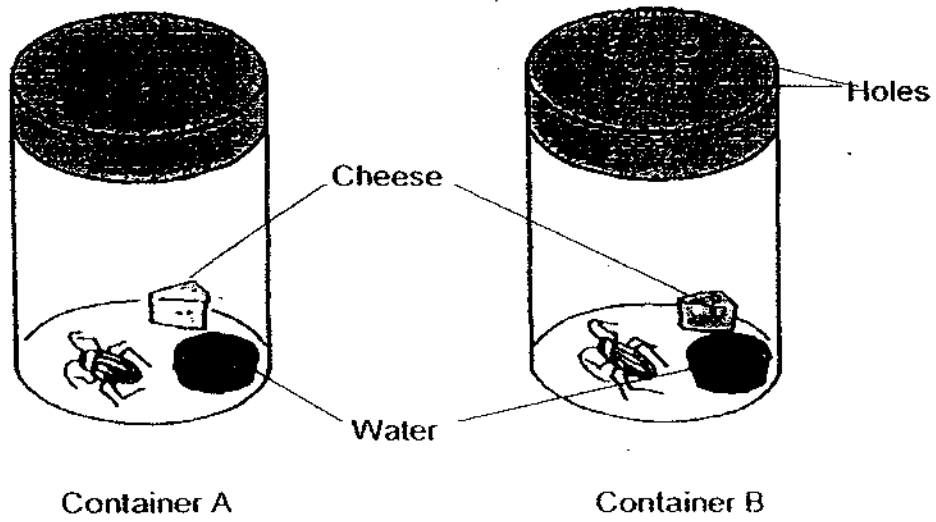
Plant	Characteristic
_____	Plant that bears fruit with one seed.
_____	Plant that has flowers that grow in a cluster.
_____	Plant that does not bear flowers.
_____	Plant that eat insects.
_____	Plant that has flowers that grow singly.
_____	Plant that has inedible fruit.



10

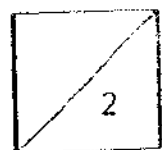
42

22. The diagram below shows two cockroaches in two separate containers, A and B.



(a) Based on the information above, which cockroach will die first? [1]

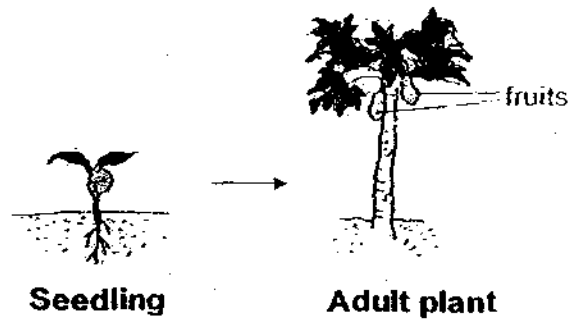
(b) Explain your answer in (a). [1]



11

43

23 (a) Look at the pictures below.



When a seedling grows, the adult plant looks different from the seedling. List two other changes as a seedling grows into an adult plant. [2]

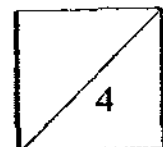
- (i) Change in appearance _____
- (ii) _____
- (iii) _____

23 (b) Look at the picture below.



(i) Suggest one way to keep the fish in the bowl alive. [1]

(ii) Explain your answer in b (i). [1]



24. Look at the picture below.

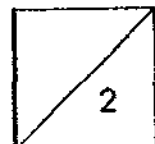


(a) Name two living things in the picture above.

[1]

(b) Name two non-living things in the picture above.

[1]



End of Part II

ANSWER SHEET

EXAM PAPER 2009

**SCHOOL : MAHABODHI PRIMARY
SUBJECT : PRIMARY 3 SCIENCE**

TERM : CA1

Q1	Q2	Q3	Q4	Q5	Q6	Q7	Q8	Q9	Q10	Q11	Q12	Q13	Q14	Q15
3	4	4	4	4	3	3	3	1	2	1	2	1	2	2

16) Similarity: Both fruit A and B have hairy skin.
Difference: Fruit A is round while fruit B is oval-shaped.

17) a) edges b) shapes

18) Water Mosquito fern Rose Tree fern
 Water hyacinth Water lily Moss

19) snake, wings

20) A and C B and D
 White Four Holes

21) Mango
 Ixora
 Bird's Nest Fern
 Venus Flytrap
 Sunflower
 Pong Pong Tree

22) a) The cockroach in container A will die first.
 b) It has no holes in the container so there is a lack of air.

23) a) ii) It bears fruits. iii) It has branches.
 b) i) Give it some food. ii) Living things need food to stay alive.

24) a) The tree and a crab.
 b) The sandcastle and spade.