

ANGLO-CHINESE SCHOOL  
(JUNIOR)



SEMESTRAL ASSESSMENT 1 (2009)  
PRIMARY 3

SCIENCE  
BOOKLET A

Friday 15<sup>th</sup> May 2009

1 hour 30 minutes

Name : \_\_\_\_\_ ( )

Class : P 3 \_\_\_\_\_

**INSTRUCTIONS TO PUPILS**

**DO NOT TURN OVER THE PAGES UNTIL YOU ARE TOLD TO DO SO**

Follow all instructions carefully.  
There are ~~30~~<sup>35</sup> questions in this booklet.  
Answer **ALL** questions.

**INFORMATION FOR PUPILS**

The total marks for this booklet is ~~60~~<sup>50</sup>.  
The total time for Booklets A and B is 1 hour 30 minutes.

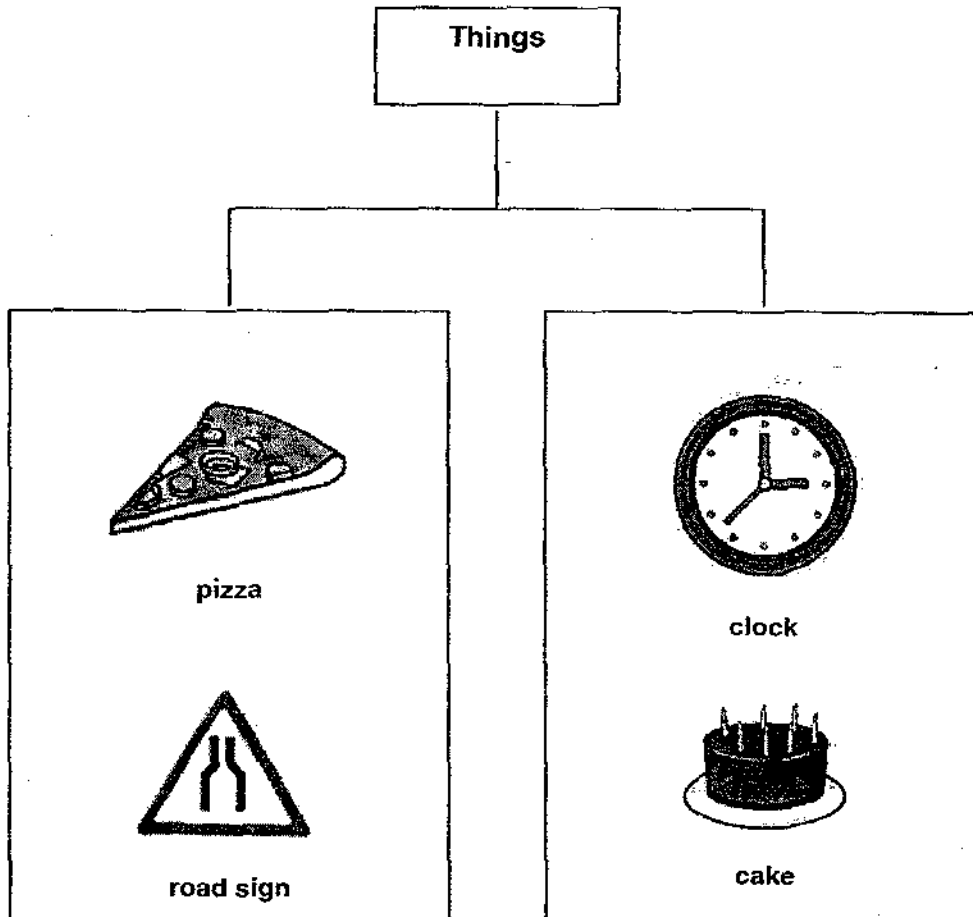
**This question paper consists of 14 printed pages. (Inclusive of cover page)**

3043

**Section A (50 marks)**

For each question from 1 to 25, four options are given. One of them is the correct answer. Choose the correct option (1, 2, 3 or 4) and shade the correct oval on the Optical Answer Sheet (OAS).

1. Dylan has classified four objects below according to their shape.



He can also classify them according to \_\_\_\_\_.

- (1) their size
- (2) their colour
- ✓(3) whether they are edible
- (4) whether they are living or non-living things

2. Kenneth observed 3 animals, **A**, **B** and **C**. He drew a checklist and placed a tick (✓) in the box when he made an observation. The completed checklist at the end of his observation is shown in the table.

| Observation | Animal A | Animal B | Animal C |
|-------------|----------|----------|----------|
| Can Swim    | ✓        | ✓        |          |
| Has Legs    | ✓        |          | ✓        |
| Lay Eggs    | ✓        | ✓        | ✓        |

Which one of the following would be correct?

|     | Animal A   | Animal B   | Animal C |
|-----|------------|------------|----------|
| (1) | Crocodile  | Peahen     | Turtle   |
| (2) | Polar bear | Guppy      | Crab     |
| (3) | Dog        | Crab       | Python   |
| (4) | Platypus   | Clown fish | Ostrich  |

3. Classification can be shown using (a)\_\_\_\_\_ and (b)\_\_\_\_\_.

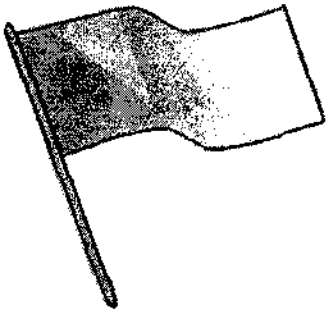
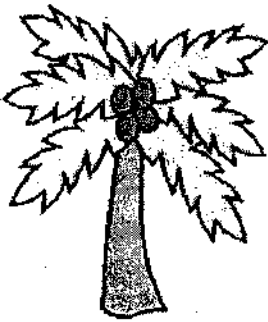
|     | (a)      | (b)    |
|-----|----------|--------|
| (1) | diagrams | maps   |
| (2) | diagrams | models |
| (3) | maps     | tables |
| (4) | diagrams | tables |

4. Living things need \_\_\_\_\_ to stay alive.

- A: air
- B: rood
- C: water
- D: sunlight

- (1) A and B only
- (2) B, C and D only
- ✓(3) A, B and C only
- (4) A, C and D only

5. In what ways are the following things **different**?

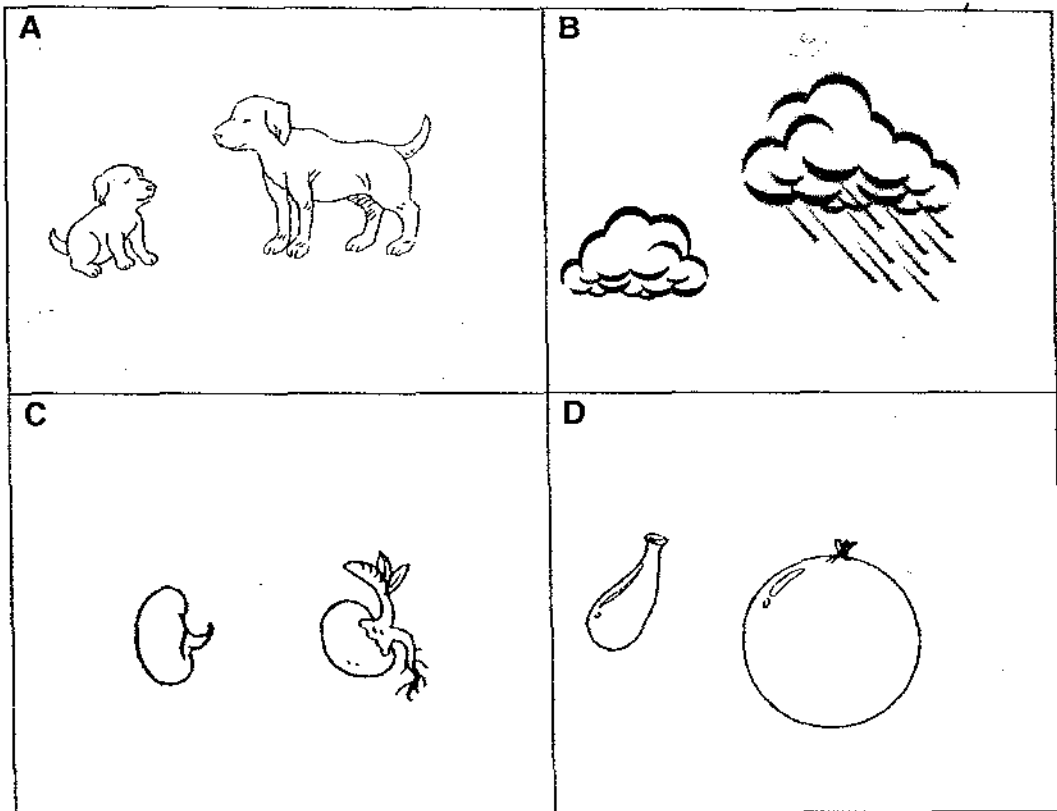
|   |  |
|---|--|
|  |  |
| Flag  | Coconut Tree   |

- (1) A flag can die but a coconut tree cannot die.
- (2) A flag cannot grow but a coconut tree can grow.
- (3) A flag is a living thing but a coconut tree is a non-living thing.
- (4) A flag can move by itself but a coconut tree cannot move by itself.

6. Which one of the following things in the table is **incorrectly** described?

|     |           | Grows | Responds | Reproduces |
|-----|-----------|-------|----------|------------|
| (1) | Panda     | Yes   | Yes      | Yes        |
| (2) | Book      | No    | No       | No         |
| (3) | Plant     | Yes   | Yes      | Yes        |
| (4) | Toy Train | No    | Yes      | Yes        |

7. Which of the following show that living things grow in size?



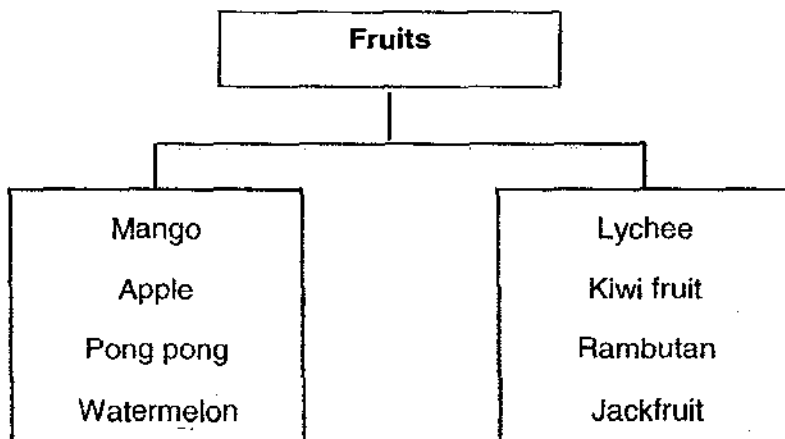
- (1) A and C only
- (2) A and D only
- (3) B, C and D only
- (4) A, B, C and D

8. Which of the following do plants with weak stems use for support?

- A: poles
- B: walls
- C: fences
- D: other plants

- (1) D only
- (2) A and B only
- (3) B, C and D only
- √(4) A, B, C and D

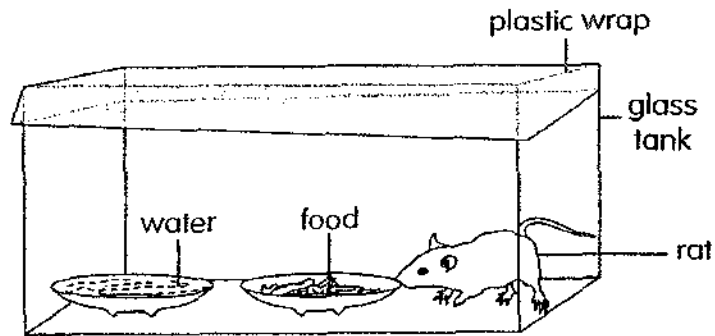
9.



The fruits are grouped according to whether they \_\_\_\_\_.

- (1) are edible or inedible
- (2) are fleshy or non-fleshy
- √(3) have a smooth or rough skin
- (4) have one seed or many seeds

10. June conducted the following experiment with a rat. She placed a rat in a tank with food and water. After two days, June discovered that the rat had died.



What do you think she was trying to find out when she placed the plastic wrap over the tank?

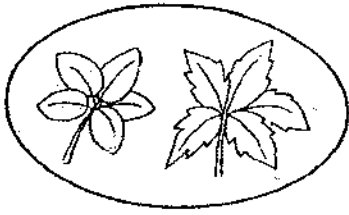
- (1) If the rat can escape.
  - (2) If the rat can live without air.
  - (3) If the rat needs light to grow.
  - (4) If the plastic wrap keeps flies away.
11. John, Faiza and Ming Ming were talking about Plant X.

|            |                                 |
|------------|---------------------------------|
| Faiza:     | It is short and bushy.          |
| Ming Ming: | It has trumpet-shaped flowers.  |
| John:      | It is a woody, evergreen shrub. |

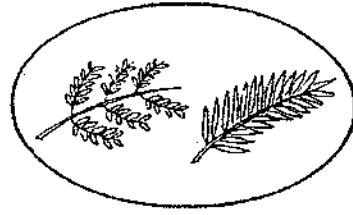
What could Plant X be?

- (1) Jasmine
- (2) Allamanda
- (3) Balsam Plant
- (4) Morning glory

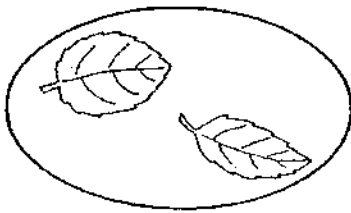
12. Study the group of leaves below carefully.



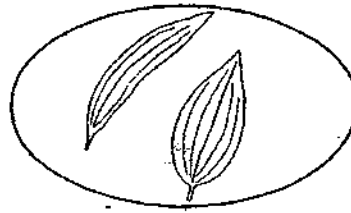
**Group A**



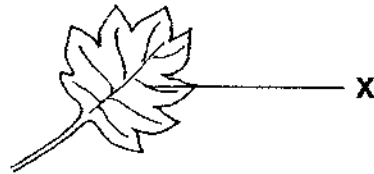
**Group B**



**Group C**



**Group D**

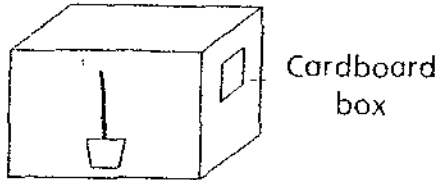


In which group would you place Leaf X?

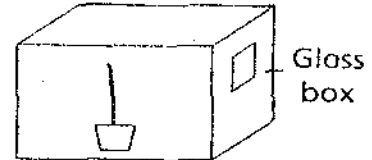
- (1) Group A
- (2) Group B
- (3) Group C
- (4) Group D

13. Plants need sunlight to make food and thus grow well. Which of the following set-ups can be used to demonstrate that the leaves of a plant respond to sunlight?

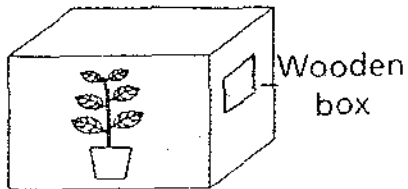
(1)



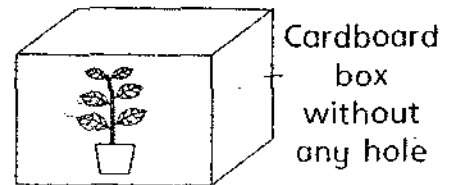
(2)



(3)



(4)



14. The following things are classified into two groups based on certain characteristics.

| Group A   | Group B      |
|-----------|--------------|
| Bee       | Tiger        |
| Parrot    | Penguin      |
| Aeroplane | Mobile phone |

Which of the following **cannot** be classified under Group A?

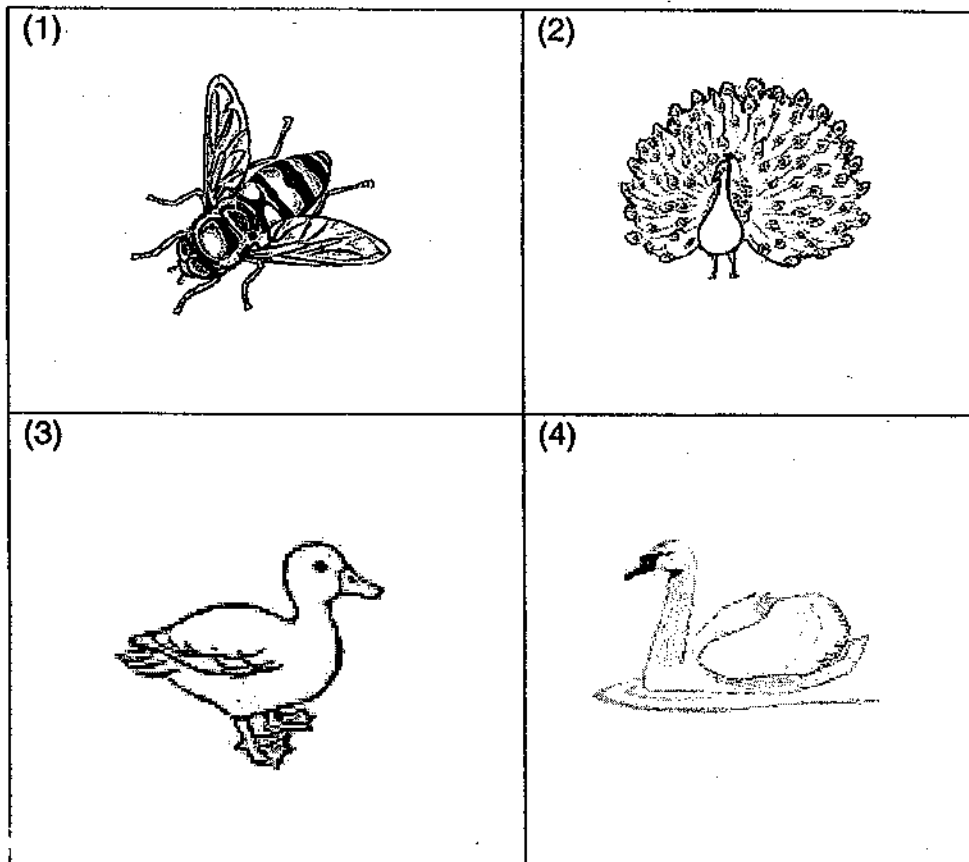
- (1) Bat
- (2) Sparrow
- (3) Crocodile
- (4) Helicopter

15. Which of the following statement(s) about animals is/are false?

- A All birds fly.
- B Mammals lay eggs with a soft shell.
- C Most insects give birth to their young alive.

- (1) A only
- (2) A and B only
- (3) B and C only
- (4) A, B and C

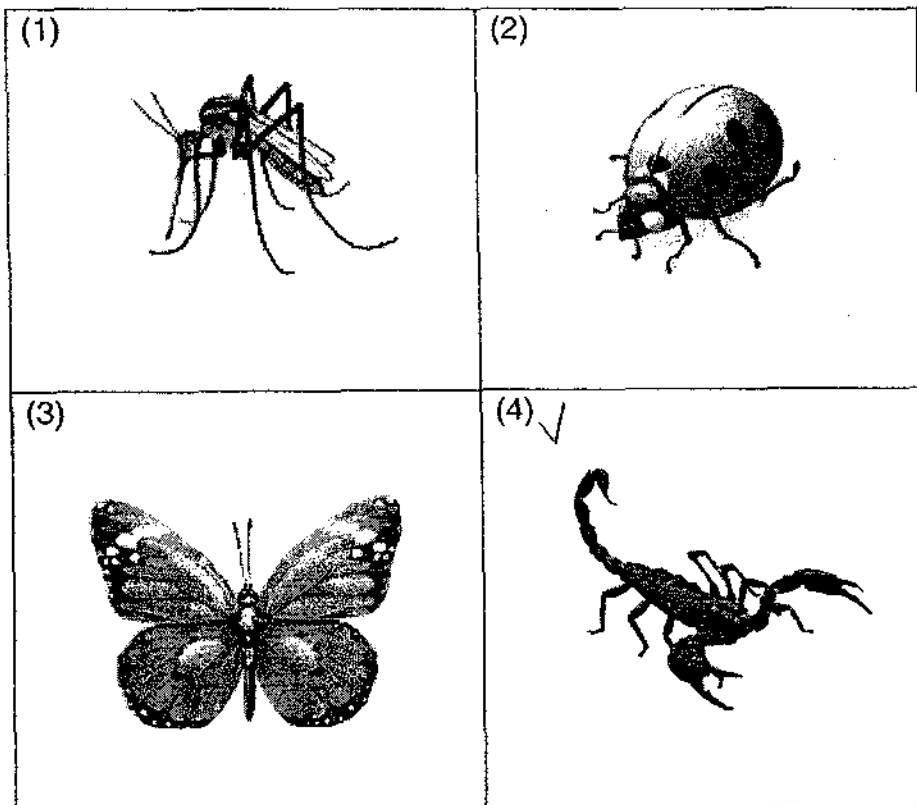
16. Which one of these animals has a different outer covering?



17. A hare and a frog have different (a) \_\_\_\_\_ but they are similar in the way they (b) \_\_\_\_\_.

|     | (a)            | (b)       |
|-----|----------------|-----------|
| (1) | diets          | live      |
| (2) | diets          | reproduce |
| (3) | outer covering | move      |
| (4) | outer covering | reproduce |

18. Which one of the following does **NOT** belong to the same group as the others?



19. Which of the following animals move in a similar manner as the animal in this picture?



caterpillar

- (1) Crab
- (2) Millipede
- (3) Earthworm
- (4) Grasshopper

20. Which of the following statement(s) about insects is/are **true**?

- A All insects lay eggs.
- B All insects need sunlight and food.
- C All insects have three body parts.

- (1) A only
- (2) A and C only
- (3) B and C only
- (4) A, B and C

21. Which one of the following groups of animals has wings and can fly?

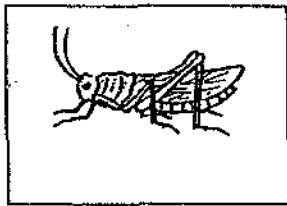
|     |          |             |           |
|-----|----------|-------------|-----------|
| (1) | Eagle    | Chicken     | Penguin   |
| (2) | Mosquito | Bat         | Ostrich   |
| (3) | Sparrow  | Kingfisher  | Cockroach |
| (4) | Emu      | Grasshopper | Kiwi      |

22. Which of the following are characteristics of fish?

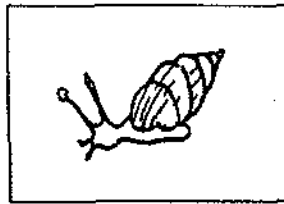
- A Most of them have scales.
- B They use their fins to swim.
- C They breathe with their gills.
- D They reproduce by laying eggs.

- (1) A and B only
- (2) C and D only
- (3) A, B and C only
- √(4) B, C and D only

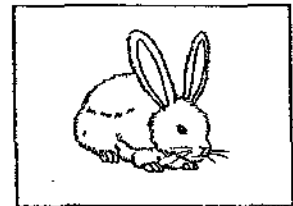
23. Which one of the following characteristics can be used to group these animals together?



Grasshopper



Snail



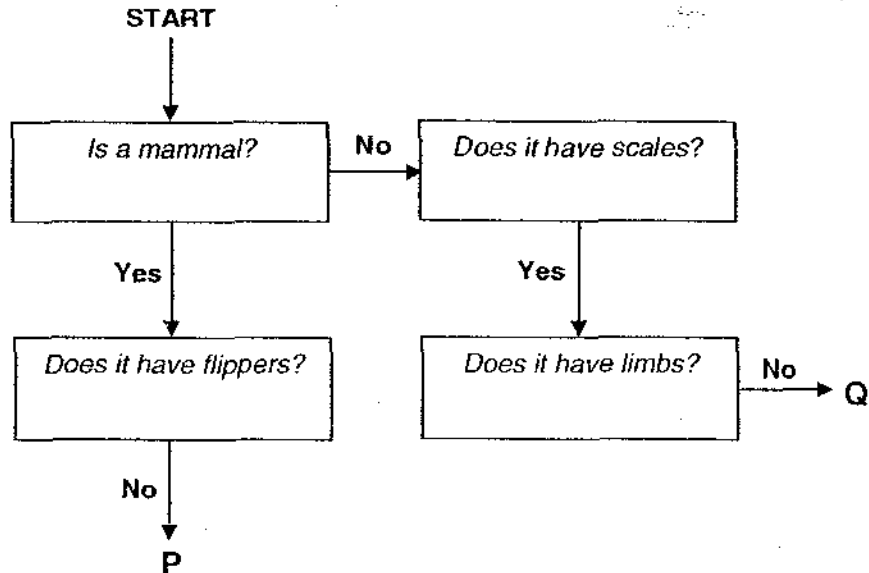
Rabbit

- 1) They can fly.
- 2) They have legs.
- 3) They eat plants only.
- (4) They give birth to their young.

24. Joseph saw an animal at the zoo. It had hair, fed on fruit and had wings. He knew that this animal gave birth to live young. What animal do you think he saw?

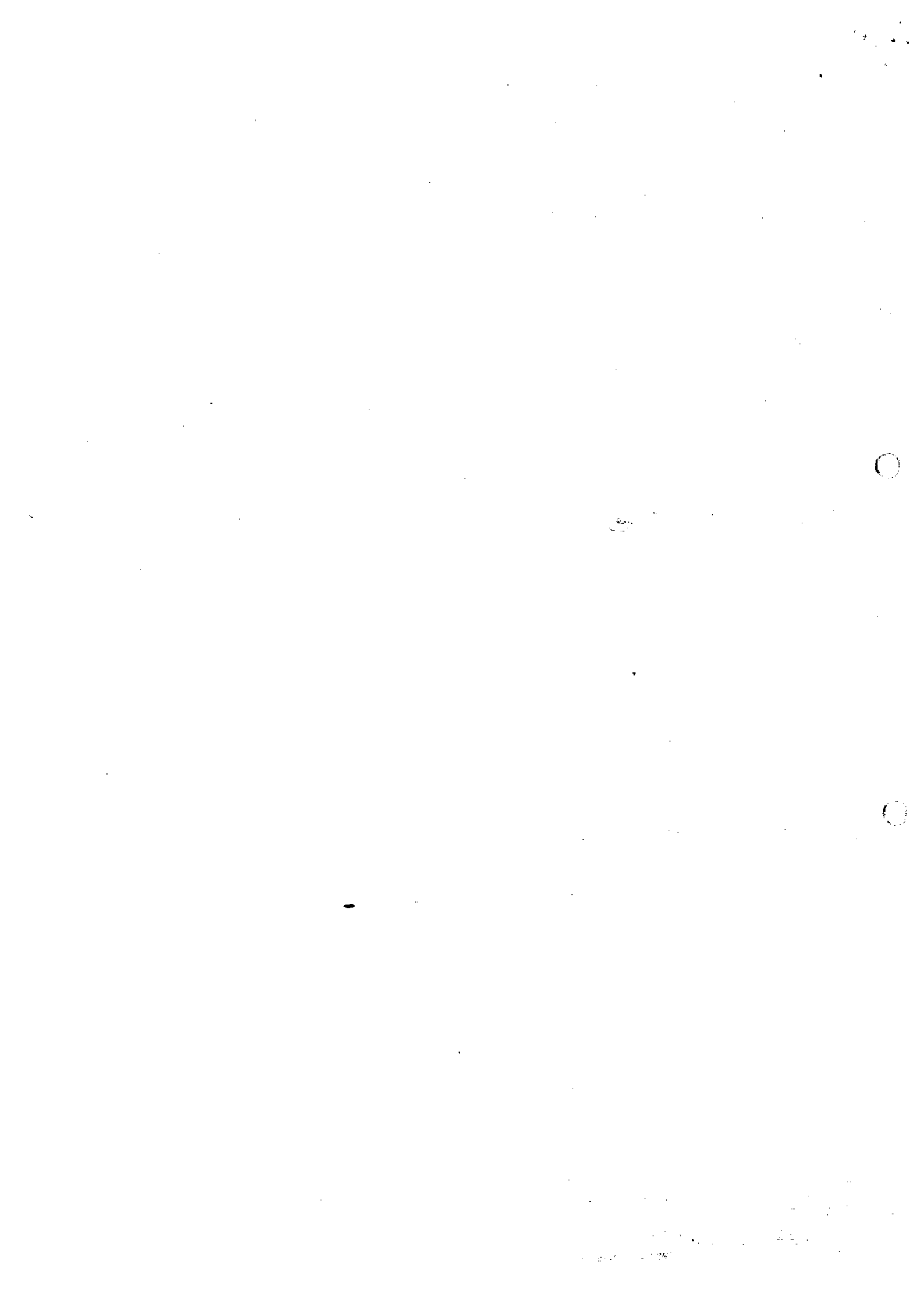
- (1) bat
- (2) emu
- (3) crow
- (4) pelican

25. Study the flowchart carefully.



Which of the following animals best represent Animal P and Animal Q?

|     | Animal P | Animal Q    |
|-----|----------|-------------|
| (1) | Seal     | Earthworm   |
| (2) | Shark    | Frog        |
| (3) | Tiger    | Caterpillar |
| (4) | Zebra    | Snake       |



**ANGLO-CHINESE SCHOOL  
(JUNIOR)**



**SEMESTRAL ASSESSMENT 1 (2009)  
PRIMARY 3  
SCIENCE  
BOOKLET B**

**Friday 15<sup>th</sup> May 2009**

**1 hour 30 minutes**

**Name :** \_\_\_\_\_ (     )

**Class :** P3 \_\_\_\_\_

**INSTRUCTIONS TO PUPILS**

**DO NOT TURN OVER THE PAGES UNTIL YOU ARE TOLD TO DO SO**

Follow all instructions carefully.

There are 16 questions in this booklet.

Answer **ALL** questions.

**INFORMATION FOR PUPILS**

The number of marks is given in brackets [ ] at the end of each question or part question.

The total marks for this booklet is 40.

The total time for Booklets A and B is 1 hour 30 minutes.

**This question paper consists of 10 printed pages. (Inclusive of cover page)**

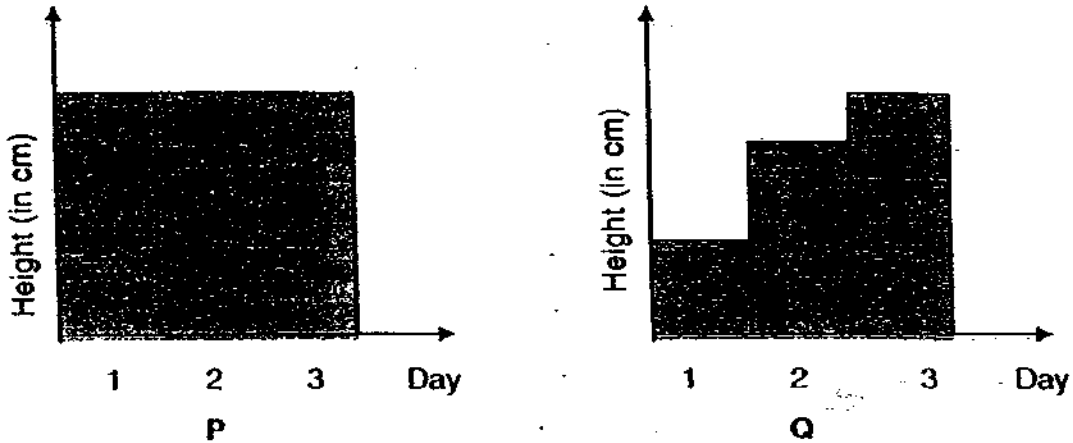
| <b>Question</b> | <b>Possible</b> | <b>Marks</b> |
|-----------------|-----------------|--------------|
| 26              | 3               |              |
| 27 – 28         | 5               |              |
| 29 – 30         | 5               |              |
| 31 – 32         | 5               |              |
| 33 – 34         | 4               |              |
| 35 – 36         | 4               |              |
| 37              | 3               |              |
| 38 – 39         | 5               |              |
| 40 – 41         | 6               |              |

|                                  |            |
|----------------------------------|------------|
| <b>Booklet A</b>                 | <b>/50</b> |
| <b>Booklet B</b>                 | <b>/40</b> |
| <b>Total</b>                     | <b>/90</b> |
|                                  |            |
| <b>Parent's Signature / Date</b> |            |

**Section B (40 marks)**

For questions 26 to 41, write your answers in this booklet. The number of marks available is shown in the brackets [ ] at the end of each question or part question.

26. Isaac observed two things, P and Q, over a period of 3 days and recorded their heights at the end of each day in the graph shown below.



- (a) Based on the graphs, state whether each of the following statements is 'True', 'False' or 'Not Possible to Tell' by putting a tick (✓) in the correct box. [2]

|       | Statement                       | True | False | Not Possible to Tell |
|-------|---------------------------------|------|-------|----------------------|
| (i)   | P is a non-living thing.        |      |       |                      |
| (ii)  | Q can be a living thing.        |      |       |                      |
| (iii) | P is definitely lighter than Q. |      |       |                      |
| (iv)  | P was shorter than Q at first.  |      |       |                      |

- (b) Based only on the graph, state a characteristic of Q. [1]

---

27. (a) Classify the following things into 2 groups. [2]

|        |         |       |      |
|--------|---------|-------|------|
| Banana | Ice tea | Bread | Milk |
|--------|---------|-------|------|

| A | B |
|---|---|
|   |   |
|   |   |
|   |   |

- (b) How have you grouped them? [1]

Group A has things \_\_\_\_\_

\_\_\_\_\_ while Group B has things \_\_\_\_\_

\_\_\_\_\_

28. In each of the following situations, the living thing which is underlined shows some characteristic that is special to living things. Name these characteristics. [2]

- (a) A Venus flytrap closes its leaves to trap insects/and flies which land on it.

\_\_\_\_\_

- (b) The field was covered with weeds within a few weeks after the school moved to a new location.

\_\_\_\_\_

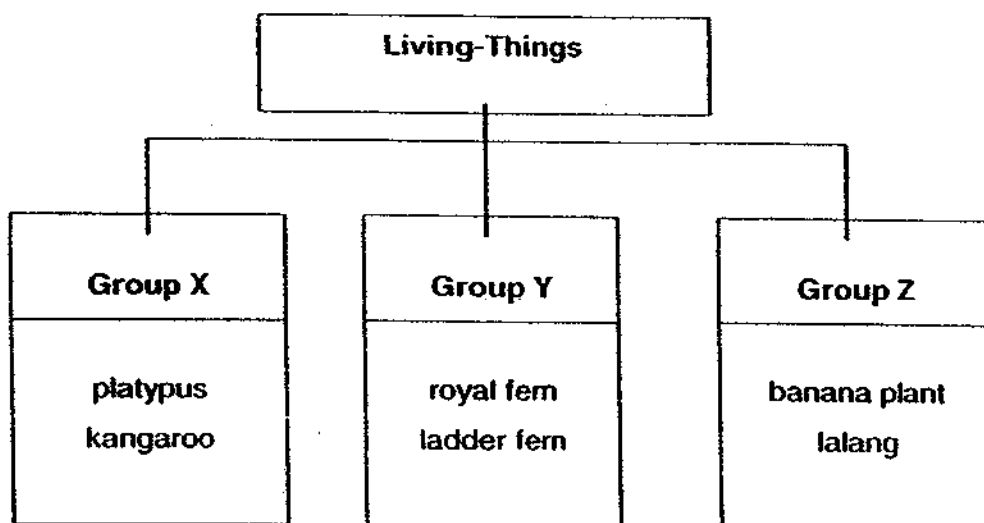
- (c) A shark swims towards an injured swimmer when it detects the scent of blood.

\_\_\_\_\_

- (d) Compared to two years ago, Amanda can now reach the top shelf to get a book without having to stand on a stool.

\_\_\_\_\_

29. Study the living things in groups X, Y and Z below.



(a) Which group(s) produce(s) flowers? [1]

---

(b) In which group will you place 'moss' under? [1]

---

(c) Explain your answer for (b). [1]

---

30. (a) Circle the item that does not belong to the group. [1]

plant      chair      car      stone      book

(b) Give a reason for your choice in (a). [1]

---

---

31. Study the trees shown.



Tree A



Tree B



Tree C

(a) Which tree A, B, or C gives us the most shade? [1]

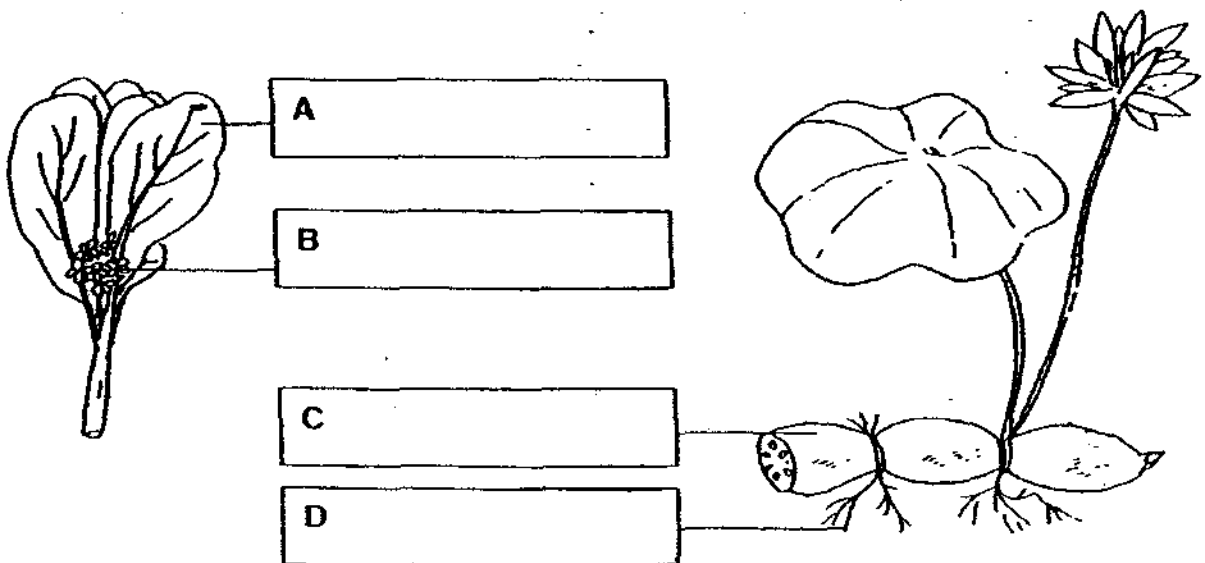
---

(b) Name two ways that Tree B is useful. [2]

---

---

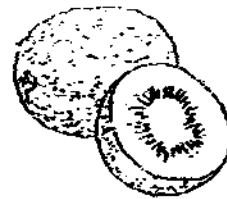
32. Study the plants shown below. Identify the parts of the plants A, B, C and D and write them in the boxes provided. [2]



33. Study the fruits and plants below.



rambutan



kiwi

(a) State a difference between the two fruits.

[1]

---



ixora



frangipani

(b) How are these flowers alike (do not mention size)?





[1]

---

34. Observe the animals below carefully.

(a) Identify the insect(s) by putting a (✓) in the correct box(es) below.

[1]

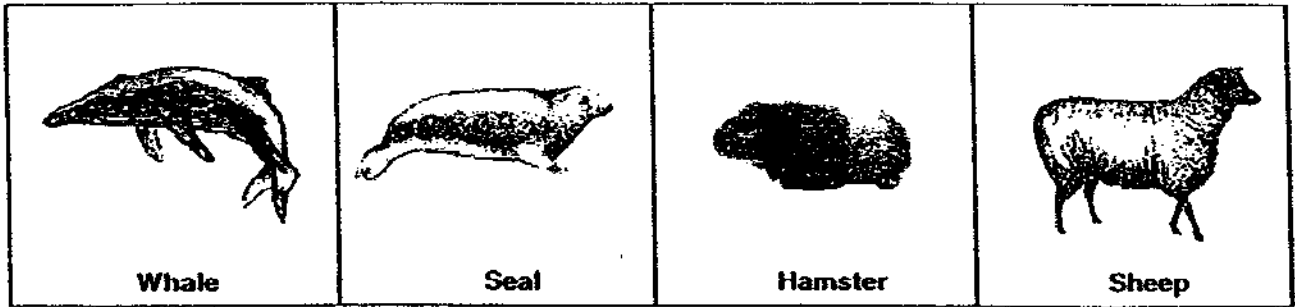
|   |   |  |   |
|---|---|--|---|
|  |  |  |  |
| Spider <input type="checkbox"/>   | Housefly <input type="checkbox"/>   | Centipede <input type="checkbox"/>   | Ant <input type="checkbox"/>  |

(b) Give a reason for your answer in (a).

[1]

---

35. Study the animals shown.



(a) State a characteristic that is common to all the four animals. [1]

---

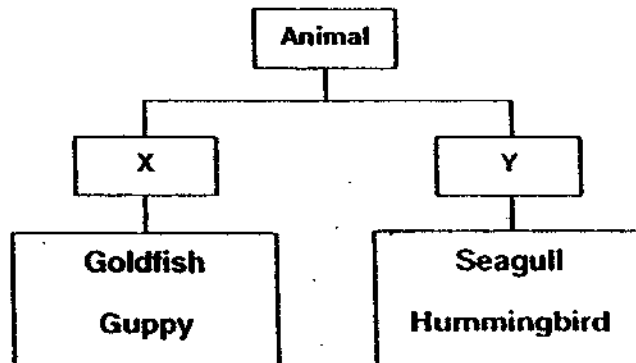


---

(b) Circle the animal that can be grouped with the animals above. [1]

Snake      Elephant      Penguin      Ostrich

36. Study the classification diagram below.



(a) Write down a suitable heading for X and Y in the blanks below. [1]

X: \_\_\_\_\_ Y: \_\_\_\_\_

(b) State a difference between the guppy and the goldfish. [1]

---



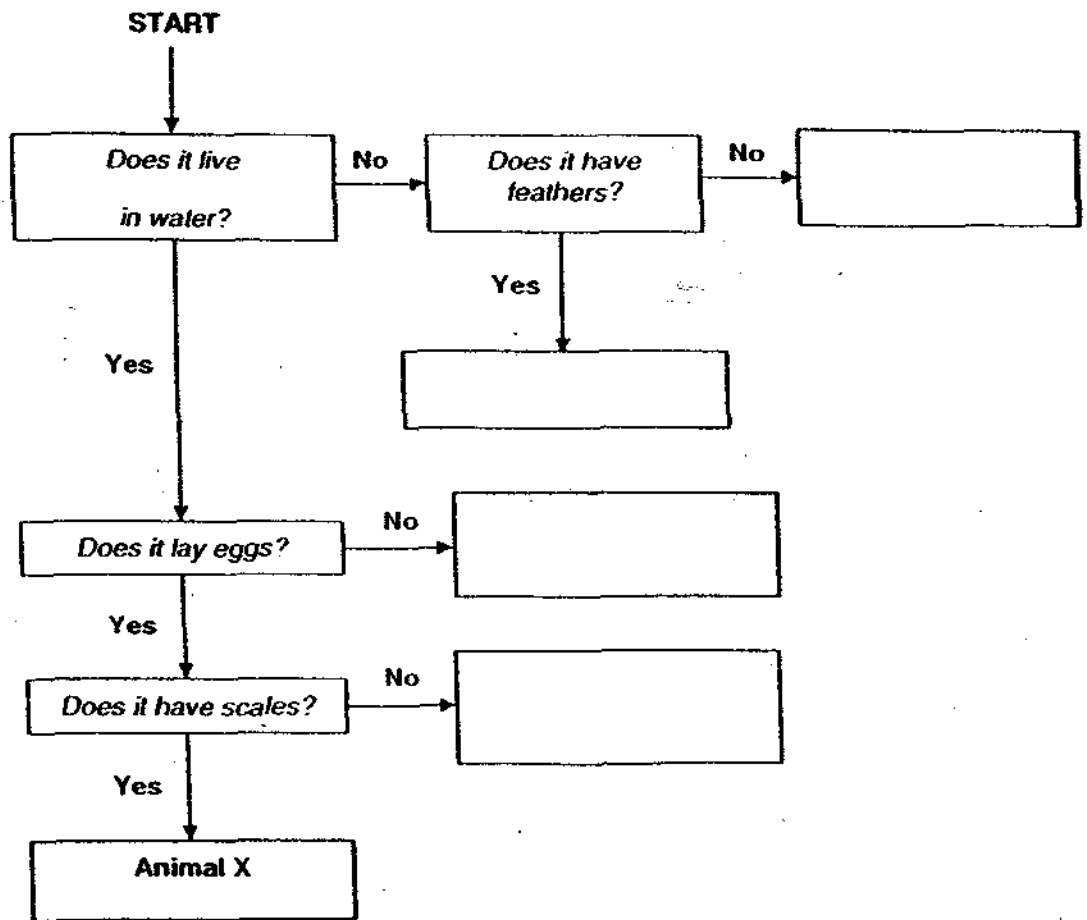
---

37. Study the flow chart.

(a) Fill in the boxes with the following animals.

[2]

dolphin      crab      penguin      tortoise



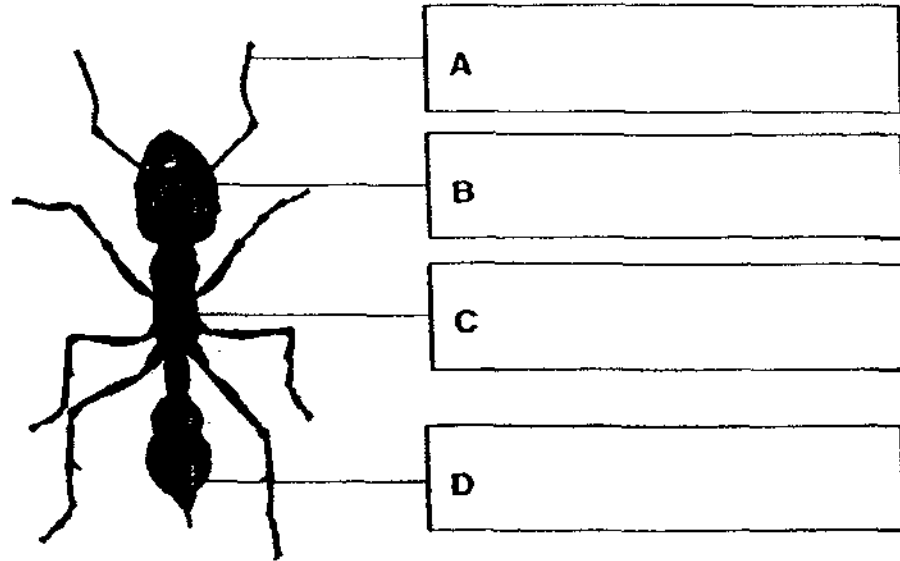
(b) State all the characteristics of Animal X.

[1]

---

---

38. The diagram shows an insect. Identify and label the parts A, B, C and D. [2]



(b) Insects have a hard outer covering. How does it help the insects? [1]

---

---

39. Study the two animals shown.



Bat



Eagle

(a) How are they similar? [1]

---

(b) State a difference between them. [1]

---

---

40. Study the dolphin, duck-billed platypus and giraffe shown below.



(a) Which of the animal(s) give(s) birth to young? [1]

---

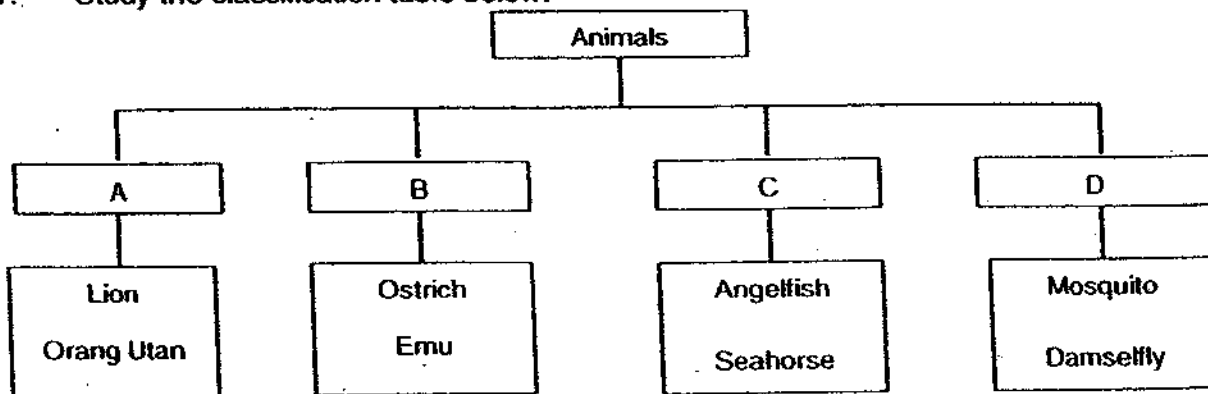
(b) State one way in which all the three animals are the same. [1]

---

(c) In what way are all the three animals different? [1]

---

41. Study the classification table below.



(a) Give suitable sub-headings for C and D. [1]

C: \_\_\_\_\_ D: \_\_\_\_\_

(b) In which group, A, B, C or D, would a parrot belong? [1]

---

(c) Give a reason for your answer in (b). [1]

---

# ANSWER SHEET

**EXAM PAPER 2009**

**SCHOOL : ACS HIGH PRIMARY  
SUBJECT : PRIMARY 3 SCIENCE**

**TERM : SA1**

|    |    |    |    |    |    |    |    |    |     |     |     |     |     |     |     |     |
|----|----|----|----|----|----|----|----|----|-----|-----|-----|-----|-----|-----|-----|-----|
| Q1 | Q2 | Q3 | Q4 | Q5 | Q6 | Q7 | Q8 | Q9 | Q10 | Q11 | Q12 | Q13 | Q14 | Q15 | Q16 | Q17 |
| 3  | 4  | 4  | 3  | 2  | 4  | 1  | 4  | 3  | 2   | 2   | 3   | 3   | 3   | 4   | 1   | 3   |

|     |     |     |     |     |     |     |     |
|-----|-----|-----|-----|-----|-----|-----|-----|
| Q18 | Q19 | Q20 | Q21 | Q22 | Q23 | Q24 | Q25 |
| 4   | 2   | 2   | 3   | 3   | 3   | 1   | 4   |

26)a)i)Not ii)T iii)Not iv)F  
b)Q can grow.

27)a)A: Banana, Bread B: Milk, Ice tea  
b)Group A has things that can be eaten while Group B has things that can be drunk.

28)a)A Venus fly trap can respond to changes around itself.  
b)Weeds can grow. Weeds can reproduce.  
c)A shark can move by itself.  
d)Amanda can grow.

29)a)Group 2 only.  
b)Group Y.  
c)Group Y can consists of non-flowering plants and 'moss' is a non-flowering plant while Group Z consists of flowering plant and Group X is for animals.

30)a)Plant.  
b)The plant is a living-thing while the rest are non-living things.

31)a)Tree C.  
b)It beautify the place. It's fruit's juice is edible.

32)A: Leaf B: Flower C: Stem D: Root hair

33)a)Rambutan had big seeds while kiwi has small seeds.  
b)Their flowers grow in dusters.

34)a)Housefly, Ant  
b)The ant and the housefly have six legs while the rest don't.

35)a)They all have hair.  
b)Elephant.

36)a)X: Fish Y: Birds  
b)A guppy gives birth while the gold fish lays eggs.

37)a) -----→tortoise

Penguin

Dolphin

Crab

b)It lives in water, lays eggs and has scales.

38)A: Feelers B: Head C: Thorax D: Abdomen  
b)It protects them from injuries and gives them shape.

39)a)They both have wings.  
b)The Eagle has feathers while the bat has hair.

40)a)The dolphin and giraffe.  
b)They are mammals.  
c)The dolphin can only live in water, the platypus can live in land and water and the giraffe only can live on land.

41)a)C: Fish D: Insects  
b)Group B.  
c)Group B consists of birds and a parrot is a bird while Group A consists of mammals, Group C consists of fish and Group D consists of Insects.