



CATHOLIC HIGH SCHOOL
PRIMARY THREE
MID-YEAR EXAMINATION 2009

SCIENCE

Name: _____ ()

Class : Primary 3 _____

Date : 18 May 2009

BOOKLET A

30 Questions

60 Marks

Total Time for Booklets A & B : 1 hour 30 min

Instructions to Candidates

Do not open this booklet until you are told to do so.

Follow all instructions carefully.

Answer all questions.

Section A : Multiple Choice Questions (60 marks)

For each question from 1 to 30, four options are given. One of them is the most suitable answer. Make your choice (1, 2, 3 or 4) on the Optical Answer Sheet.

1. Which of the following is made from things that were never alive?

- (1) Book
- (2) Diamond ring
- (3) Feather duster
- (4) Tomato ketchup

2. Which of the following is true about a balsam plant and a frog?

- (1) Both can make their own food.
- (2) Both have young which resemble the adult.
- (3) Both respond to changes in their surroundings.
- (4) Both can move from place to place by themselves.

3. The table below shows some information about a girl.

Age / years	Mass / Kg
2	10
4	15
6	20

What can you conclude from the information given in the table?

- (1) The girl has become taller as she grows.
 - (2) The girl needs air, food and water to grow.
 - (3) The girl has become heavier as she grows.
 - (4) The girl responds quickly to changes around her.
4. Study the table below.

	Ability to move from place to place	Needs air, food and water	Can reproduce	Has legs
E		√	√	
F	√	√	√	√
G	√	√	√	
H	√			

Which of the following is most likely to be a non-living thing?

- (1) E
- (2) F
- (3) G
- (4) H

5. Study the statements made by four pupils below.

Alex If I press a lump of clay, it will change its shape. That means it is a living thing because it responded to my touch.

Jane When I touch the leaves of a mimosa plant, it will close its leaves. Therefore, a mimosa is a living thing.

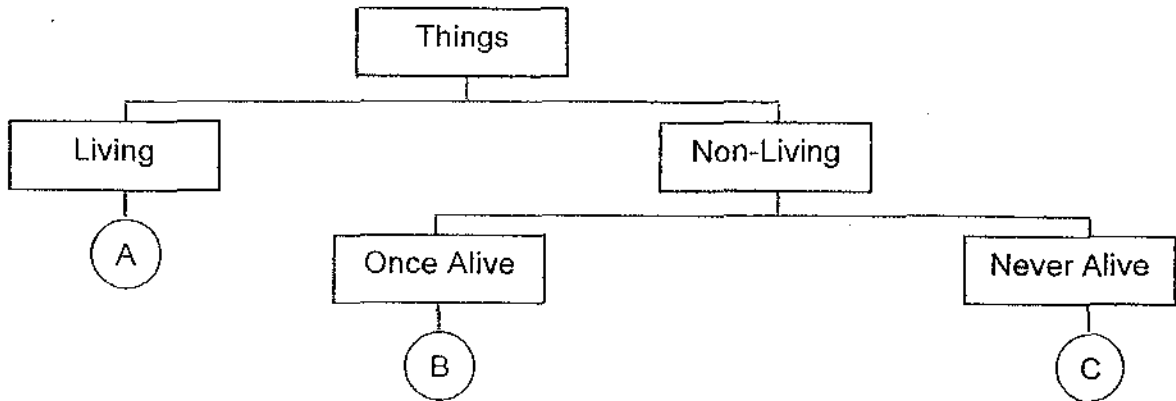
Harry My robot can speak and move. Therefore, it is a living thing.

Linda All of you are wrong. Only animals are living things.

Who has made a correct statement?

- (1) Alex
- (2) Jane
- (3) Harry
- (4) Linda

6. Study the classification table below.



Which of the following sets can be placed in Groups A, B and C respectively?

	Group A	Group B	Group C
(1)	Rabbit	Electric fan	Water bottle
(2)	Apple	Leather bag	Wool sweater
(3)	Snake	Wooden table	Spectacles
(4)	Alligator	Pillow	Paper

7. How do fungi reproduce?

- (1) From caps
- (2) From stems
- (3) From seeds
- (4) From spores

8. Which of the following is not an insect?

(1)



An ant

(2)



A spider

(3)



A butterfly

(4)



A grasshopper

9. The four animals below are placed together because they have the same outer body coverings. Which of the following animals does not belong in this group?

(1)



A penguin

(2)



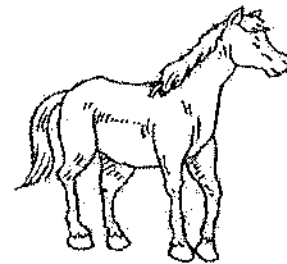
A kangaroo

(3)



A monkey

(4)



A horse

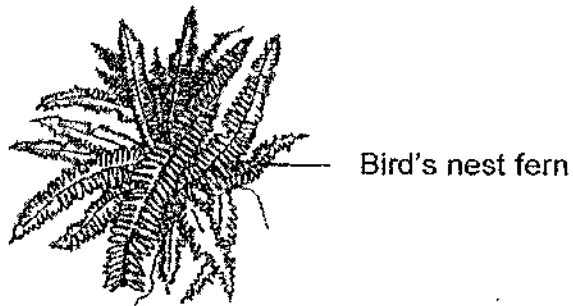
10. Which of the following sets has been grouped correctly?

	Plant	Animal	Fungi	Micro-organism
(1)	Hibiscus	Bacteria	Mould	Earthworm
(2)	Hibiscus	Earthworm	Mould	Bacteria
(3)	Sunflower	Earthworm	Fern	Bacteria
(4)	Sunflower	Bacteria	Fern	Mould

11. Which of the following living things has been matched to the correct group?

	Living Things	Groups
(1)	Bat	Bird
(2)	Shark	Fish
(3)	Dolphin	Fish
(4)	Mushroom	Plant

12. Some pupils came across the plant shown below.



In which of the following groups can this plant be placed in?

- A Bears flowers
- B Grows from spores
- C Makes its own food

- (1) Groups A and B only
- (2) Groups A and C only
- (3) Groups B and C only
- (4) Groups A, B and C

13. Look the two pictures below.



Mushroom

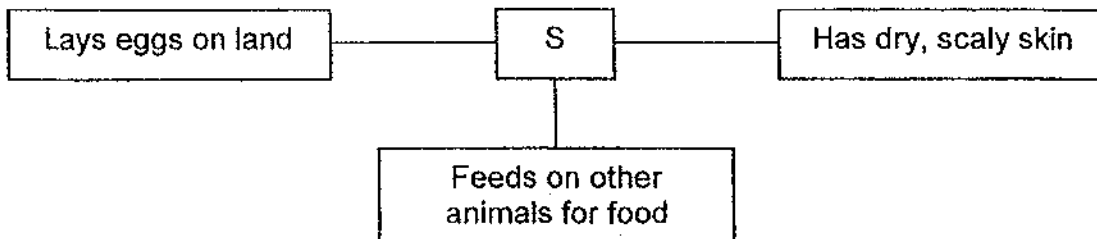


Mould

How are the two named organisms similar?

- (1) They can move on their own.
- (2) They can make their own food.
- (3) They belong to the same group called fungi.
- (4) They do not need air, food and water to stay alive.

14. Study the concept map below.



Which of the following can Animal S be?

(1)



A frog

(2)



A tiger

(3)



A lizard

(4)



A seahorse

15. Study the classification table below.

Group A	Group B	Group C	Group D
Ant	Dolphin	Bat	Rabbit
Caterpillar	Goldfish	Eagle	Kangaroo

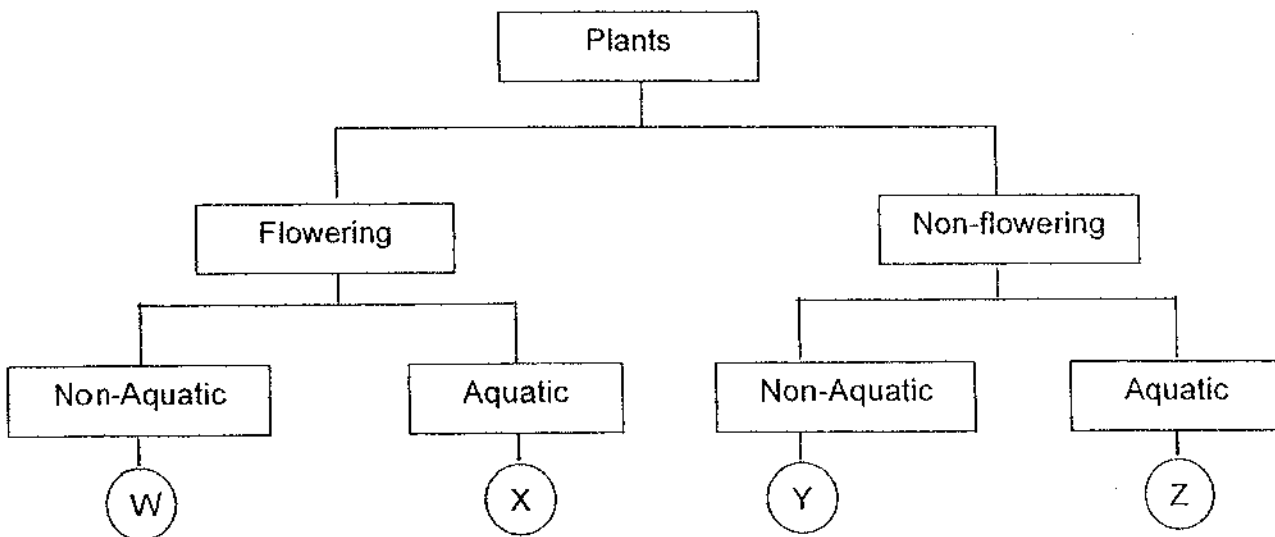
What are the animals above grouped according to?

- (1) According to the way they move.
- (2) According to the way they reproduce.
- (3) According to the types of food they eat.
- (4) According to their outer body coverings.

16. The table below gives information on two plants, J and K, based on two characteristics. A tick (✓) shows that the plant has the characteristic.

Plant	J	K
Bears fruit	✓	
Grows on land		

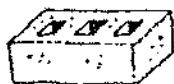
From the information given, where do plants J and K belong in the classification table below?



	Plant J	Plant K
(1)	W	Y
(2)	X	Z
(3)	X	Y
(4)	Y	Z

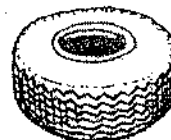
17. Which of the following objects are made from the same material?

(A)



A brick

(B)



A tyre

(C)



An envelope

(D)



A toilet paper

- (1) A and B only
- (2) A and D only
- (3) B and C only
- (4) C and D only

18. Below are four bags that are made from different materials.

(A)



A paper bag

(B)



A woollen bag

(C)



A plastic bag

(D)



A cotton bag

Which bag will most likely be the best choice when you are going for a swim? Why?

- (1) Bag A. It is soft.
- (2) Bag B. It is light.
- (3) Bag C. It is waterproof.
- (4) Bag D. It is water-absorbent.

19. Which of the following materials is man-made?

- (1) Iron
- (2) Clay
- (3) Plastic
- (4) Rubber

20. Study the materials in the table below.

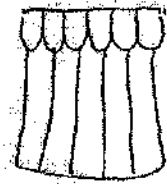
From plants	From animals
Wool	Silk
Cotton	Leather

Which of the following materials is grouped wrongly?

- (1) Silk
- (2) Wool
- (3) Cotton
- (4) Leather

21. Which of the following objects is made from a different material than the others?

(1)



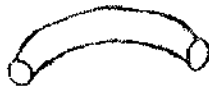
A curtain

(2)



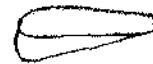
A tyre

(3)



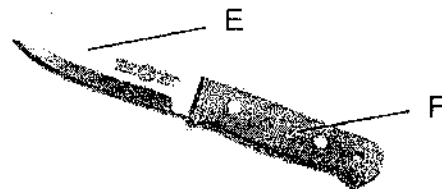
A water hose

(4)



A door wedge

22. Below is a picture of a knife.



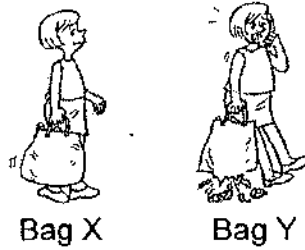
What are parts E and F made up of?

	Part E	Part F
(1)	Steel	Wood
(2)	Steel	Glass
(3)	Plastic	Wood
(4)	Plastic	Rubber

23. Which of the following is not made from fabric?

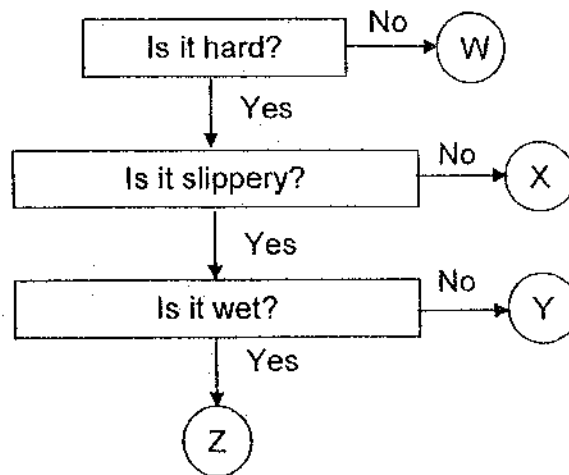
- (1) Shirt
- (2) Towel
- (3) Carpet
- (4) Raincoat

24. Mrs Chen put the same number of things into two different carrier bags as shown below.



What can you conclude from the diagram above?

- (1) Bag Y is softer than Bag X.
 - (2) Bag Y is lighter than Bag X.
 - (3) Bag X is stronger than Bag Y.
 - (4) Bag X is more flexible than Bag Y.
25. Study the flow chart below.



Which of the following objects can be placed at 'Z'?

- (1) A silk dress
- (2) A plastic bag
- (3) A piece of rock
- (4) A piece of melting ice

26. Look at the classification table below.

Groups		
Hard	Strong	Unbreakable

An object can be placed in both the 'Hard' and 'Strong' groups only. What can that object be?

- (1) Paper bag
- (2) Metal spoon
- (3) A glass mug
- (4) Aluminum foil

27. A material is light, soft, flexible and absorbs water. Which of the following objects can be made from this material?

(A)



A piece of tissue paper

(B)



An umbrella

(C)



A raincoat

(D)



A bath towel

- (1) A and B only
- (2) A and D only
- (3) B and C only
- (4) C and D only

28. Why is iron less suitable than fabric for making a school bag?

- A Iron tends to rust.
- B Iron gets hot easily.
- C Iron is not transparent.
- D Iron is heavier than fabric.

- (1) A and B only
- (2) C and D only
- (3) A, B and D only
- (4) B, C and D only

29. Study the characteristics of some materials shown below.

Material	Stretches	Bends easily	Not easily broken
E	x	x	√
F	√	√	√
G	√	x	√
H	x	√	x

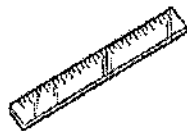
Which material is most likely to be rubber?

- (1) E
- (2) F
- (3) G
- (4) H

30. Three similar rulers shown below are made of different materials.



A plastic ruler



A metal ruler



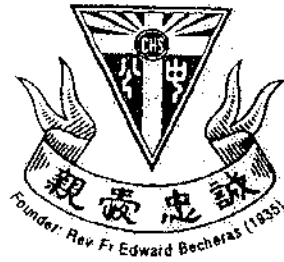
A wooden ruler

The metal ruler can be used to scratch the plastic ruler but the wooden ruler cannot. What can you infer from this statement?

- A The metal ruler is harder than the wooden ruler.
- B The metal ruler is harder than the plastic ruler.
- C The metal ruler is as hard as the wooden ruler.
- D The wooden ruler is harder than the plastic ruler.

- (1) A and B only
- (2) A and C only
- (3) B and C only
- (4) C and D only

- End of Section A-



CATHOLIC HIGH SCHOOL
PRIMARY THREE
MID-YEAR EXAMINATION 2009

SCIENCE

Name: _____ ()

Class : Primary 3 _____

Date : 18 May 2009

BOOKLET B

14 Questions

40 Marks

Total Time for Booklets A & B : 1 hour 30 min

Instructions to Candidates

Do not open this booklet until you are told to do so.

Follow all instructions carefully.

Answer all questions.

Parent's Signature: _____

Date: _____

Score	
Section A	60
Section B	40
Total	100

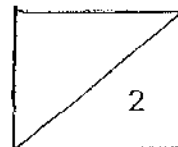
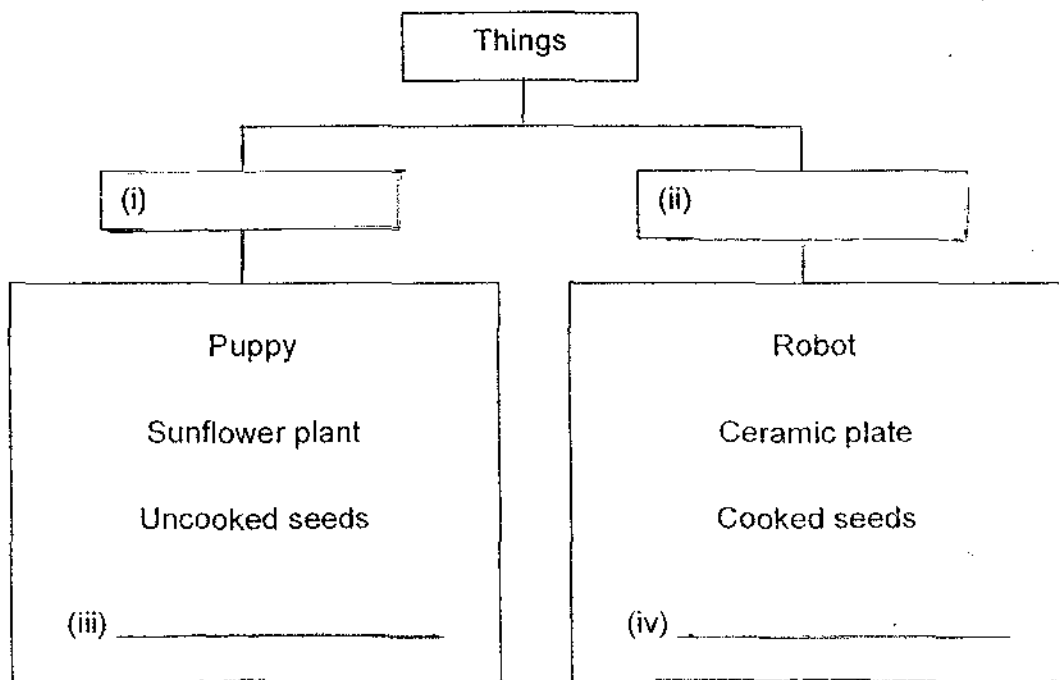
Section B : Open-Ended Questions (40 marks)

Read the following questions carefully and write your answers in the space provided. The maximum marks that can be awarded is shown at the end of each question or part-question.

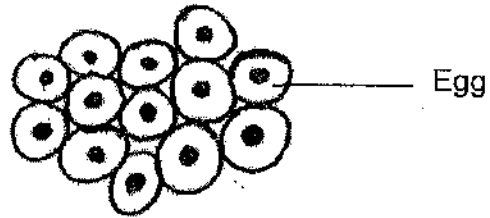
31. Look at the classification table below.

(a) Suggest 2 suitable sub-headings for the items under (i) and (ii). [1]

(b) Suggest 2 other objects that can be placed in each of the classification tables under (iii) and (iv). [1]

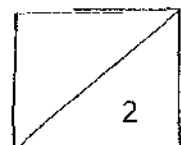


32. Max saw some eggs in the drain water. He observed it further. He noticed that they were jelly-like and were moving slightly.

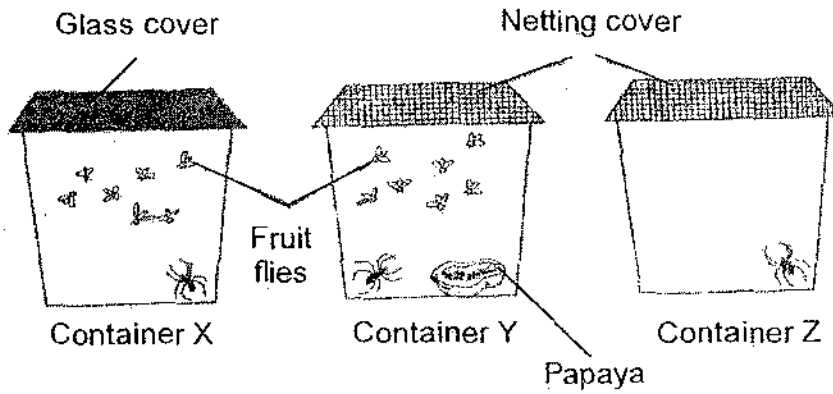


- (a) Is the egg a living or a non-living thing? [1]

- (b) Why do you say so? [1]

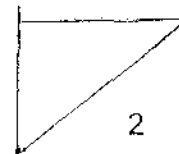


33. Gabriel carried out an experiment as shown in the diagram below. He kept three spiders separately in different containers.

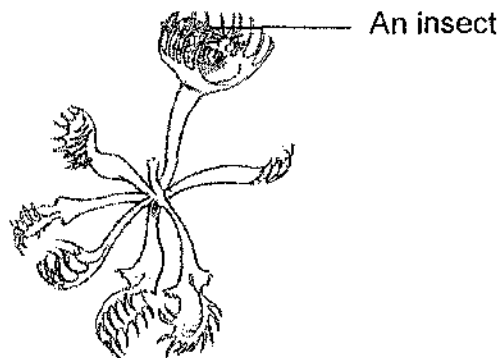


(a) The spider in container _____ will die first. [1]

(b) Explain your answer in part (a). [1]



34. During a recent visit to the Botanical Gardens, Joel saw a strange plant. He noticed an insect flying near the plant. Suddenly, the insect disappeared. He drew a sketch of the plant and insect as shown below.



- (a) What happened to the insect? [1]

- (b) What characteristic of living things is the plant showing? [1]



35. The table below shows how some animals are grouped according to their outer body coverings.

Body coverings			
Group A	Group B	Group C	Group D
Ostrich	Bear	Crab	Crocodile
Rooster	Sheep	Cockle	Fish

- (a) Under which group would you put 'fox'? [1]

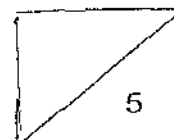
- (b) Name an item that can be made from the outer body covering of the animals in the same group as the fox. [1]

36. The platypus has a duck-like bill which makes it look like a bird but it is not a bird.



- (a) Name two characteristics which make it different from a bird. [2]

- (b) Name another animal that belongs to the same group as the platypus. [1]



37. Study the two types of plants below.



Hibiscus

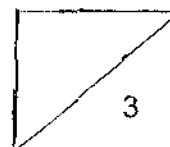


Arrowhead

- (a) State one similarity between the two plants. [1]
(Do not compare shape and size)

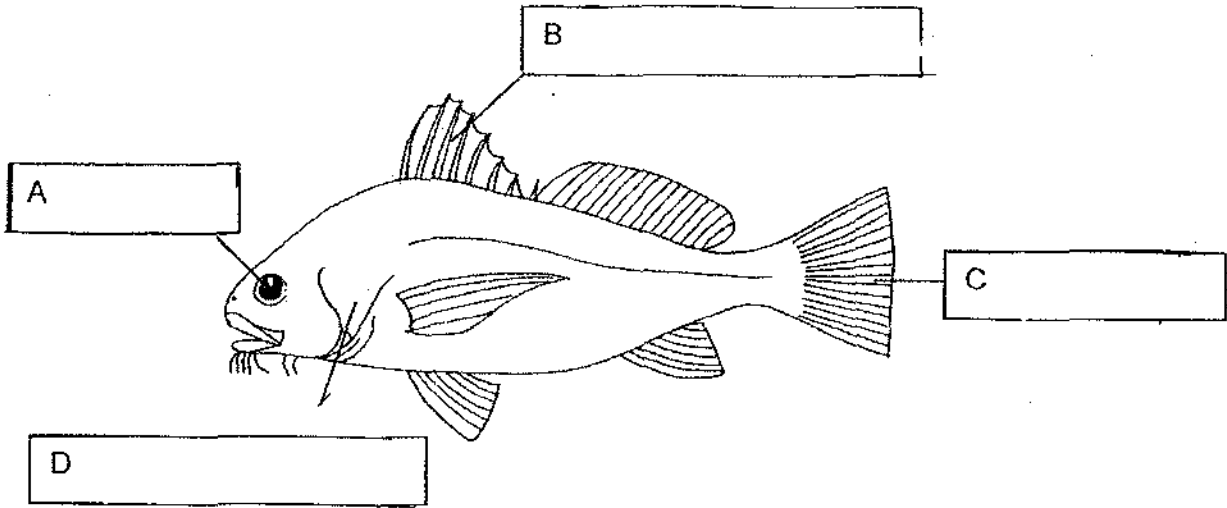
- (b) State one difference between the two plants. [1]
(Do not compare shape and size)

- (c) Name another plant that is similar to the arrowhead. [1]



38. Label the different parts of a fish.

[2]

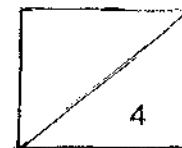


(e) What is the function of part B?

[1]

(f) What can be found under part D?

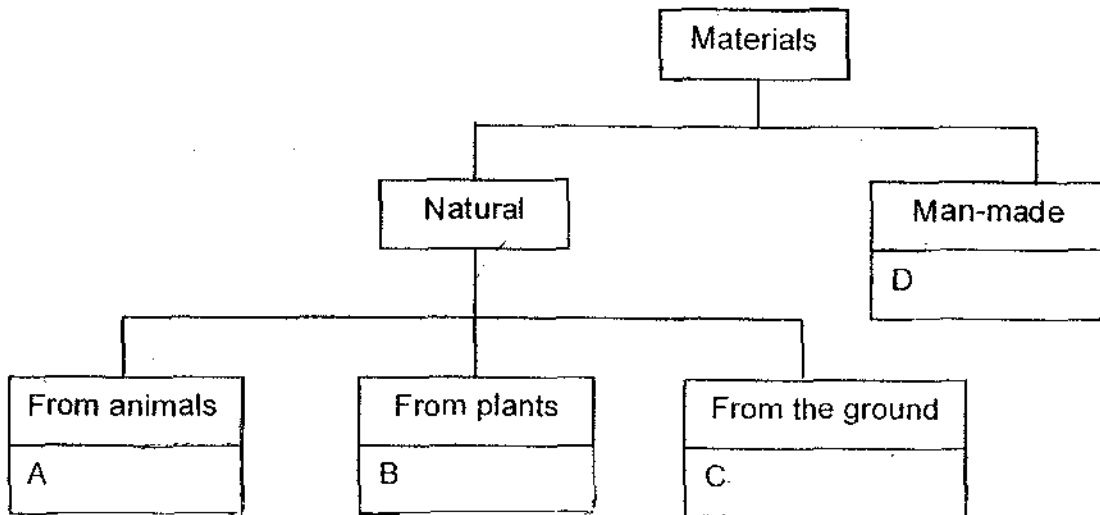
[1]



39. Group the following materials in the box correctly in the flow chart below.

[2]

Wool	Iron
Nylon	Rubber



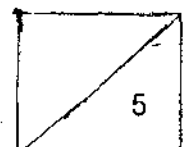
40. Part X of the spectacles shown below is made of glass.



(a) Name another material that is suitable for making Part X. [1]

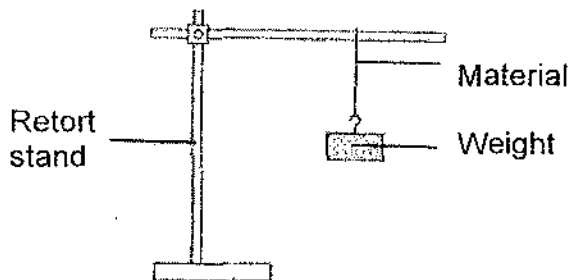
(b) What is the most important characteristic this material has which is similar to glass? [1]

(c) State one difference between the two materials. [1]



539

41. An experiment was conducted to test the strength of four different materials, P, Q, R and S. Weights are hung on the different materials until it breaks.

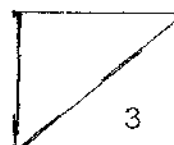


The observations of the total number of weights on the thread just before it breaks were recorded in the table below.

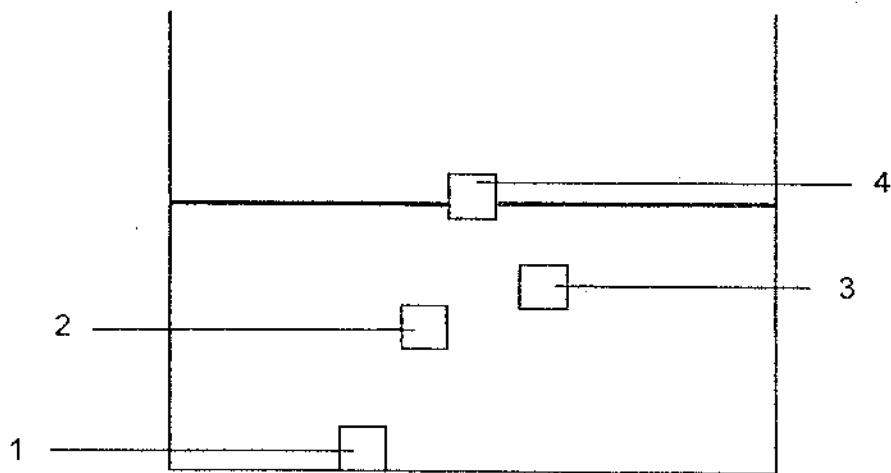
Materials	P	Q	R	S
Number of weights before material breaks	14	24	6	5

- (a) From the above observations, arrange the four materials from the strongest to the weakest. [1]

- (b) Which material would you choose to make a fishing line? Why? [2]



42. A block of metal and a block of styrofoam of the same mass were put into a tank of water as shown below.



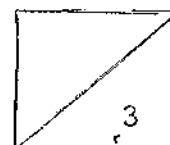
A tank of water

- (a) Which number would represent the block of metal and styrofoam in the tank of water? [1]

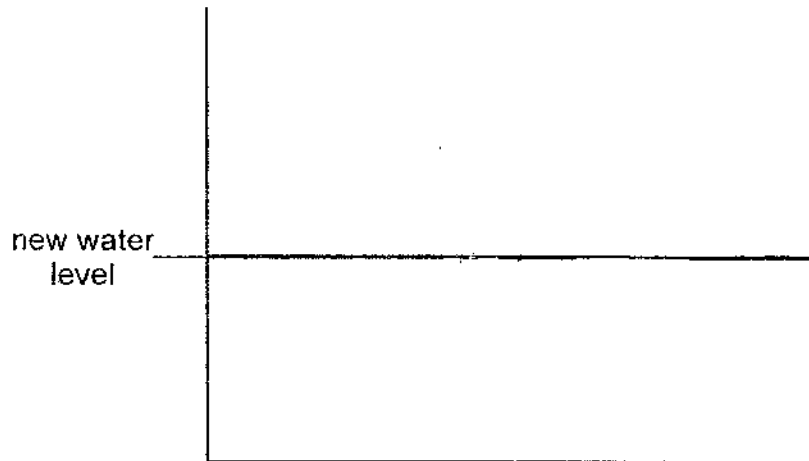
i Block of metal _____

ii Block of styrofoam _____

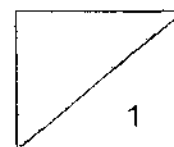
- (b) If we reduce the amount of water in the tank by half, will the position of the metal block in the water change? Give a reason for your answer. [2]



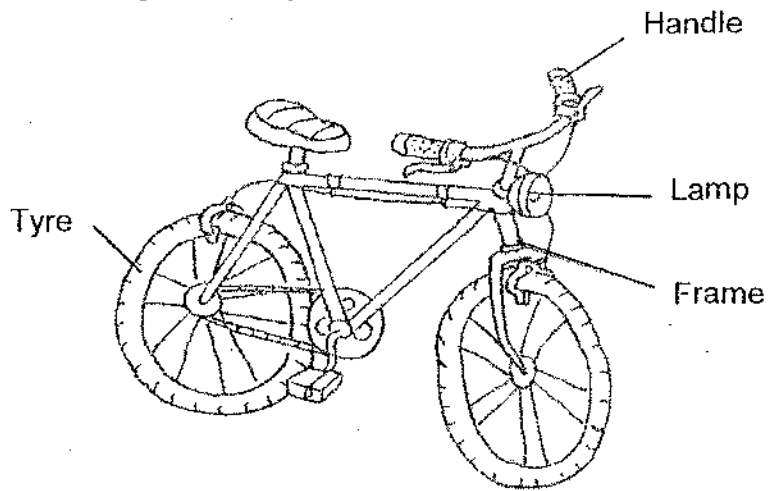
- (c) When we reduce the amount of water in the tank by half, draw in the new position of the block of styrofoam in the diagram provided below. [1]



Tank with the amount of water reduced by half

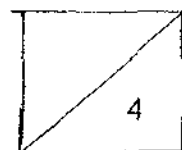


43. Look at the drawing of the bicycle below.

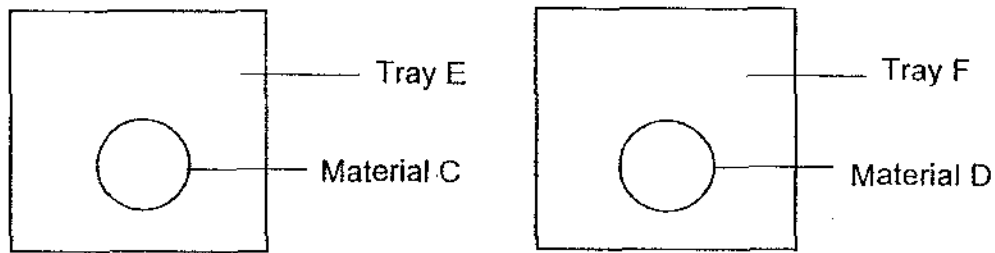


Identify the materials used for each of the labelled parts. State one property for the use of each type of material. [4]

Parts of bicycle	Material used	Property
Tyre		
Lamp		
Frame		
Handle		



44. In an experiment conducted, two materials C and D are tested to find out which material absorbs more water. Materials C and D, that are both white in colour, are each placed in similar trays as shown in the diagram below. Equal amounts of blue ink are poured onto each material. After 5 minutes, both materials C and D are examined.



Upon observing the materials, Material C was relatively dry. Most of the blue ink is found on Tray E. Material D was wet and completely blue. It had gone soft. Only a few drop of blue ink is found on Tray F.

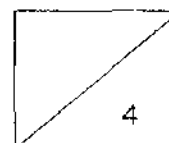
- (a) Based on the observations, which material is less absorbent? [1]

- (b) Which material is most likely to be made from plastic? [1]

- (c) Which material do you think is more suitable to be made into tissue paper? [1]

- (d) State a reason for your answer in (c). [1]

- End Of Paper -



EXAM PAPER 2009

SCHOOL : CATHOLIC HIGH PRIMARY
SUBJECT : PRIMARY 3 SCIENCE

TERM : SA1

Q1	Q2	Q3	Q4	Q5	Q6	Q7	Q8	Q9	Q10	Q11	Q12	Q13	Q14	Q15	Q16	Q17
2	3	3	4	2	3	4	2	1	2	2	3	3	3	1	2	4

Q18	Q19	Q20	Q21	Q22	Q23	Q24	Q25	Q26	Q27	Q28	Q29	Q30
3	3	2	1	1	4	3	4	3	2	3	2	1

31)a)i)Living things ii)non-living things
 b)iii)lion iv)chair

32)a)The egg is a living thing.
 b)The egg hatches.

33)a)X.
 b)Container X do not have air coming in so container X will first die.

34)a)Being eaten by a plant.
 b)Living thing respond to changes in the surrounding.

35)a)Group B.
 b)Fur coats.

36)a)i)It feed its young with milk.
 ii)It has hair in his body.
 b)Tiger.

37)a)Both have stem.
 b)Arrow head live in water but not the Hibiscus plant.
 c)Elodea.

38)A: eyes B: fins C: tails D: gills cover
 e)It help the fish move a little faster.
 f)Gills.

39)A: Wool B: Rubber C: Iron D: Nylon

40)a)Plastic.

b)It is transparent.

c)Glass break easily but not the plastic.

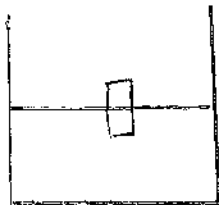
41)a)Q, P,R,S

b)Q. It is the strongest.

42)a)i)1 ii)4

b)No because mass of the metal block still remains the same.

c)



43)Type→rubber-----elastic

Lamp→glass-----transparent

Frame→metal-----strong

Handle→rubber---soft

44)a)Material C.

b)Material C.

c)Material D.

d)It is absorbent.