



Maha Bodhi School  
2009 Semestral Assessment 1  
Science

Name : \_\_\_\_\_ ( )

Date : 7 May 2009

Class : Pr 3 ( )

Duration : 1 h 30 min ( Parts I & II )

**Part I: ( 40 marks )**

For each question from 1 to 15, four options are given. One of them is the correct answer. Make your choice (1, 2, 3 or 4). Shade the correct oval (1, 2, 3 or 4) on the Optical Mark Sheet (OMS).

1. Look at the picture of a supermarket shown below.



The things in the supermarket are classified according to their \_\_\_\_\_.

- (1) size
- (2) shape
- (3) colour
- (4) texture

2. Study the table shown below.

Group A	Group B
Balsam plant	Fallen leaf
Caterpillar	Dead caterpillar
Tree	Book

Which one of the following can be placed in Group B?

- (1) Charcoal
- (2) Silkworm
- (3) Crocodile
- (4) Mushroom

3. Study the picture shown below.



Three pupils made the following observations about the picture.

Andrew : The children can be classified according to their age.

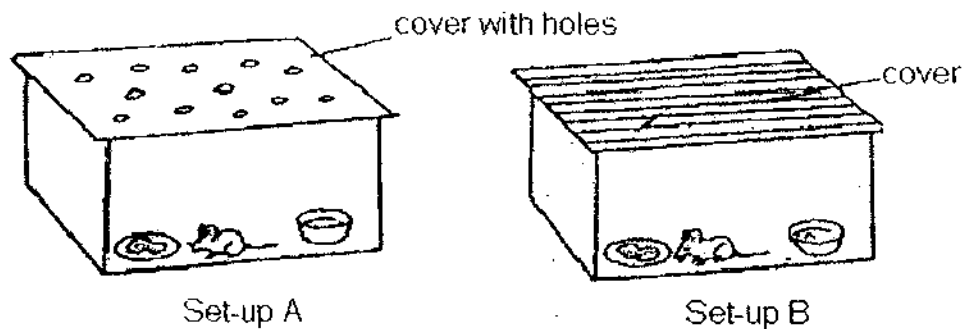
Bob : The children can be classified according to their gender (boy or girl).

Cherry : The children can be classified according to the types of clothing they wear.

Which of the following pupil(s) made a correct observation?

- (1) Cherry only
- (2) Bob and Cherry only
- (3) Andrew and Bob only
- (4) Andrew and Cherry only

4. Jennifer conducted an experiment with set-up A and B shown below. She placed a mouse, some food and water in each of the set-up.



She was trying to find out if the mouse needs \_\_\_\_\_ to survive.

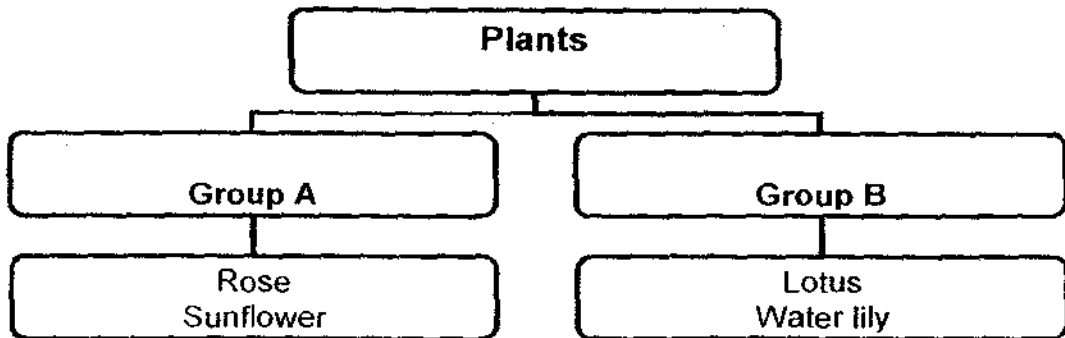
- (1) air
- (2) food
- (3) light
- (4) water

5. Peter and his friends were playing hide and seek one day. Peter hid inside an abandoned refrigerator and closed the refrigerator door behind him locking himself inside. When his friends found him 5 hours later, he was already dead.

Which one of the following could be the reason that caused his death?

- (1) He had no food.
- (2) He had no water.
- (3) There was no sunlight in the refrigerator.
- (4) There was not enough air in the refrigerator.

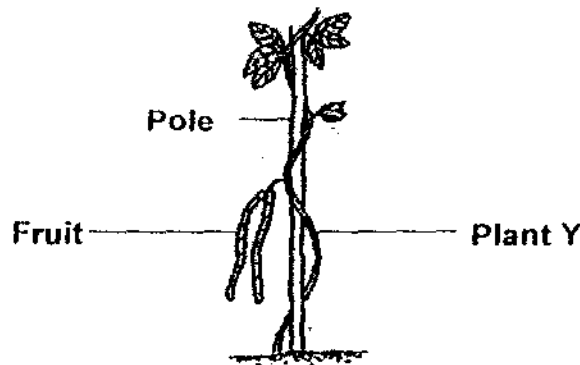
6. Study the classification chart below.



Which one of the following can be suitable headings for Group A and Group B?

	Group A	Group B
(1)	Land Plants	Water Plants
(2)	Non-flowering plants	Flowering plants
(3)	Flowers that grow singly	Flowers that grow in a bunch
(4)	Plants that can make their own food	Plants that cannot make their own food

7. Study the picture of plant Y shown below.



Which one of the following statements about plant Y is **true**?

- (1) Plant Y has no roots.
- (2) Plant Y has weak stem.
- (3) Plant Y is a non-flowering plant.
- (4) Plant Y does not need water for growth.

8. Study the picture of leaf P and Q below.



Leaf P

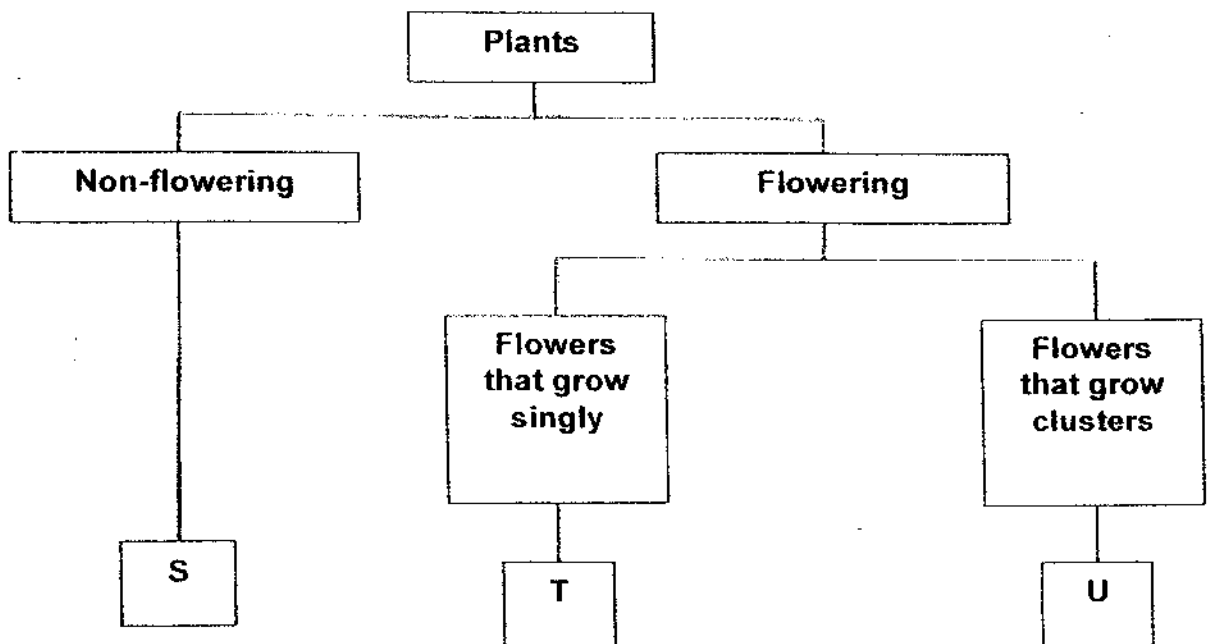


Leaf Q

Which one of the following statements is **true**?

- (1) Leaf P and leaf Q are green in colour.
- (2) Leaf P and leaf Q are from the same plant.
- (3) Leaf P and leaf Q have different leaf edges.
- (4) Leaf P and leaf Q come from non-flowering plant.

9. Study the flow chart below carefully.



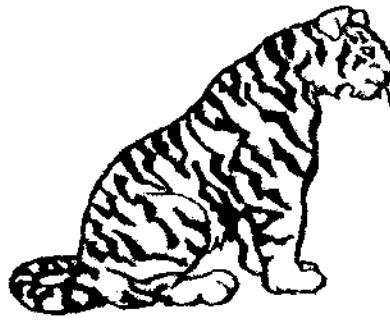
Which one of the following list could S, T and U possibly be?

	S	T	U
(1)	Heliconia	Water lily	Frangipani
(2)	Bird nest fern	Ixora	Orchid
(3)	Moss	Hibiscus	Ixora
(4)	Jasmine	Rose	Rafflesia

10. Study the pictures shown below carefully.



Boy



Tiger

Which one of the following **best** describes the boy and the tiger?

	Similarity	Difference
(1)	They both eat meat.	The human can swim but the tiger cannot.
(2)	They both have four limbs.	The tiger has a tail but the human does not.
(3)	They both have hair on their bodies.	The human has skin but the tiger does not.
(4)	They both give birth to their young alive.	The tiger has hair on its body but the human does not.

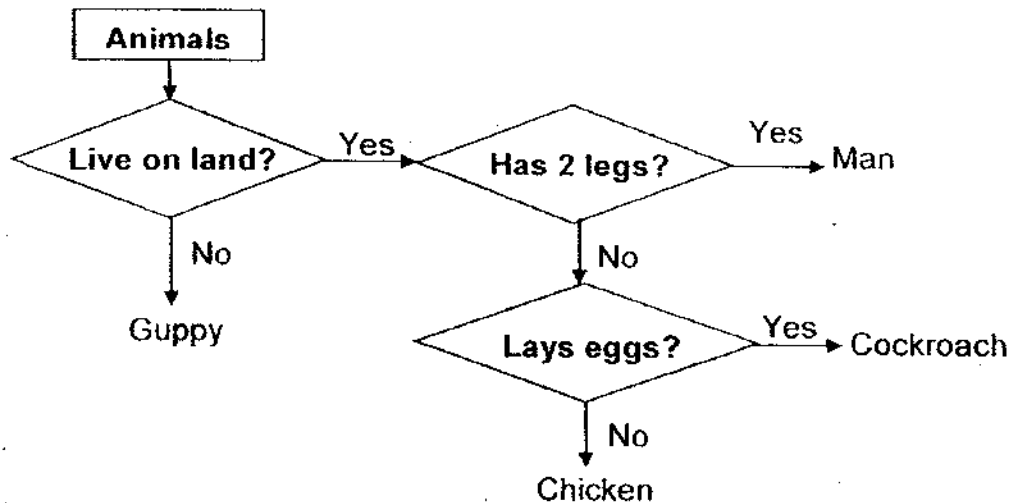
11. Jason made some observations on three animals, a lion, a panda and a crow. He noticed that these three animals have some similarities.

Which one of the following statements about the three is **not** true?

- A. They live on land.
- B. They are all mammals.
- C. They feed on other animals.
- D. They all have more than two legs.

- (1) A only
- (2) B and C only
- (3) A and D only
- (4) B, C and D only

Study the flowchart below carefully and answer Questions 12 and 13:



12. Which one of the following animals is incorrectly classified?

- (1) Man
- (2) Guppy
- (3) Chicken
- (4) Cockroach

13. Which one of the following animals can most likely replace the animal you have chosen in Question 12?

- (1) Bat
- (2) Goat
- (3) Penguin
- (4) Dragonfly

14. Study the diagram below.



Dolphin



Whale

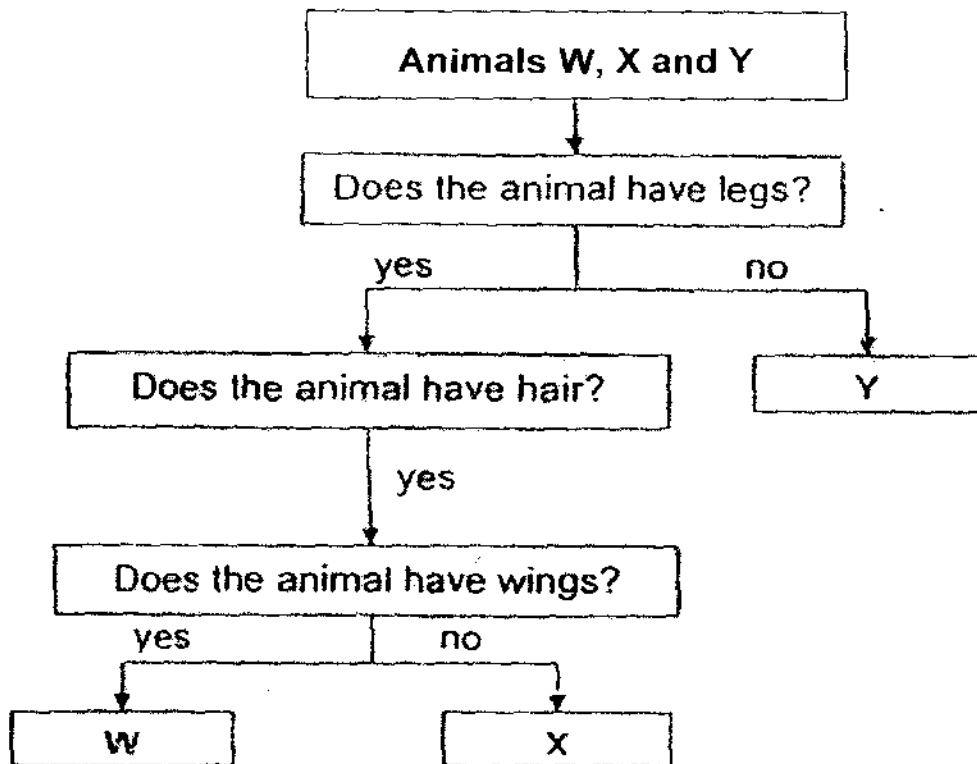


Shark

The shark does not belong to the same group as the other animals because

- (1) it feed on other animals
- (2) it is the largest animal
- (3) it ~~breathes~~ breathes through gills
- (4) it is a mammal

15. Study the flowchart below.



Which one of the following **correctly** represents W, X and Y?

	W	X	Y
(1)	Butterfly	Tiger	Guppy
(2)	Bat	Monkey	Snake
(3)	Penguin	Spiny anteater	Goldfish
(4)	Sparrow	Squirrel	Lizard

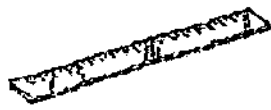
16. Melissa stated the following characteristics of animals.

- A: The presence of wings.
- B: The number of legs it has.
- C: The outer covering of the animal.

Which of the above characteristics can be used to identify a **bird**?

- (1) A only
- (2) C only
- (3) A and B only
- (4) A, B and C

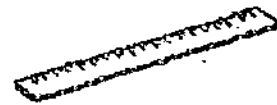
17. Daniel conducted an experiment to find out which material is the hardest. He used three similar rulers A, B and C made from different materials as shown in the picture below.



Ruler A



Ruler B



Ruler C

The results of his experiment show that Ruler B can be used to scratch ruler A and C. And ruler C cannot be used to scratch ruler A.

Which one of the following statements can **most likely** be the conclusion of the experiment?

- (1) Ruler B is the hardest.
- (2) Ruler C is as hard as ruler B.
- (3) Ruler C is harder than ruler A.
- (4) Ruler A and C are of the same hardness.

18. Study the objects in the table below.

Group X	Group Y
Aluminium Can	Leather belt
Rubber band	Ring file
Plastic spoon	Handphone
Eraser	Spectacles

Which of the following headings are most suitable for **Group X** and **Group Y**?

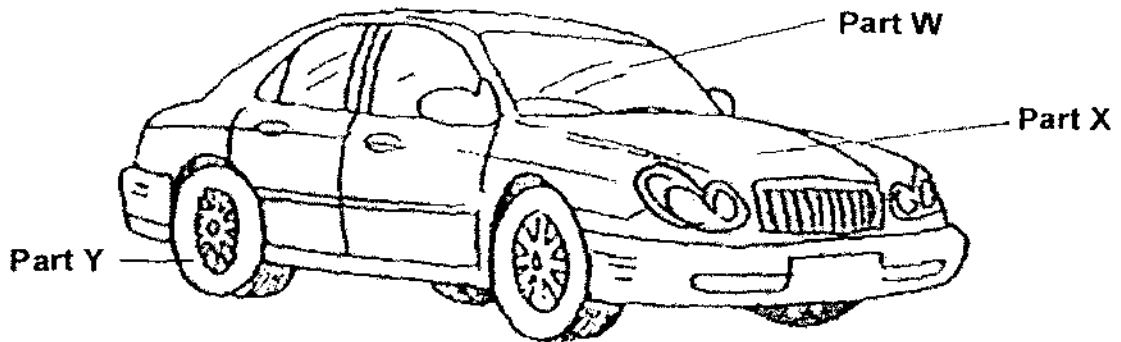
	Group X	Group Y
(1)	Never Alive	Once Alive
(2)	Non-living things	Living things
(3)	Made from plants	Made from animals
(4)	Made of one material	Made of more than one material

19. An umbrella is made of plastic and steel. Which of the following statements explains why these materials are used in making an umbrella?

- A: Plastic is light.
- B: Steel is strong.
- C: Plastic is waterproof.
- D: Plastic can be easily broken.

- (1) A only
- (2) A and B only
- (3) A, B and C only
- (4) A, B, C and D

20. Study the picture of a car shown below.



Which one of the following correctly represents the materials of parts W, X and Y?

	Part W	Part X	Part Y
(1)	Plastic	Plastic	Metal
(2)	Glass	Metal	Rubber
(3)	Metal	Wood	Plastic
(4)	Glass	Plastic	Plastic

END OF PART I



Maha Bodhi School  
2009 Semestral Assessment 1  
Science

Name : \_\_\_\_\_ ( )

Class : Pr 3 ( )

Duration : 1 h 30 min ( Parts I & II )

Date : 7 May 2009

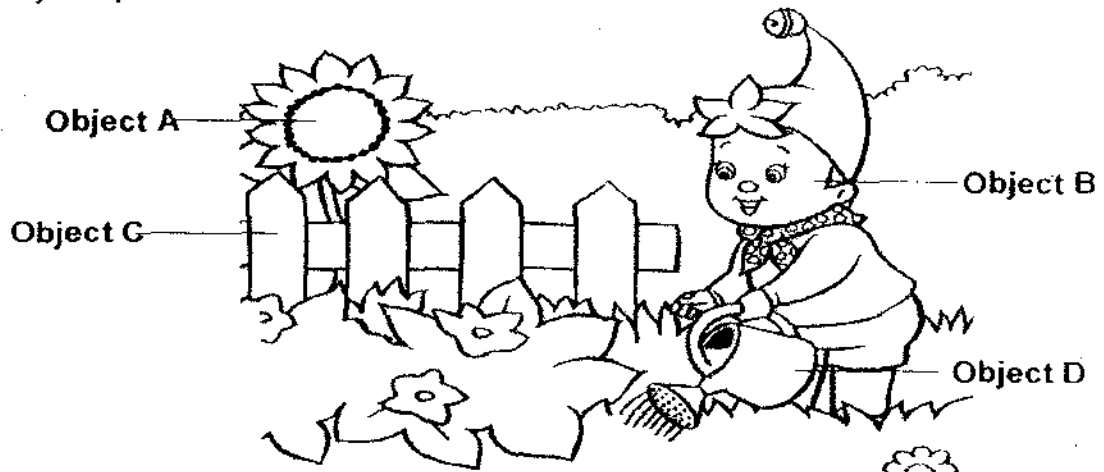
Parent's Signature : \_\_\_\_\_

Part I ( 40 marks )	
Part II ( 40 marks )	
Total ( 80 marks )	

**Part II: ( 40 marks )**

Write your answers to questions 21 to 30 in this script.

21. Study the picture below.



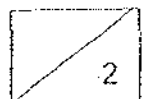
(a) Classify objects A, B, C and D into two equal groups in the table below. [1]

Group X	Group Y

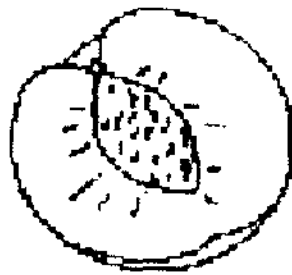
(b) Give a suitable heading each for Group X and Group Y. [1]

Group X: \_\_\_\_\_

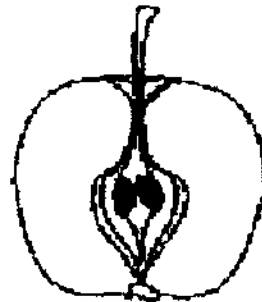
Group Y: \_\_\_\_\_



22. Study the cross-section of the two fruits shown in the picture below.



Peach



Apple

(a) From the picture above, state **one difference** between the two fruits.  
(Do not compare their size and shape.)

[2]

---

---

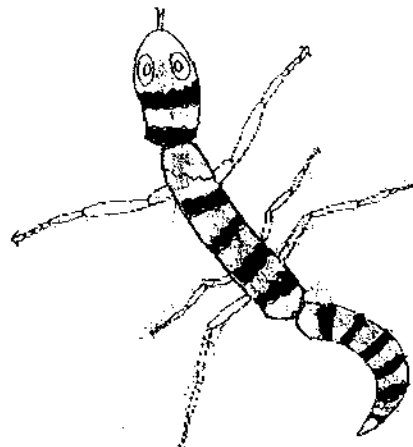
(b) Name a fruit that is similar to the peach. In what way are they similar?

[2]

---

---

23. The picture below shows an **imaginary** Animal R.



Animal R

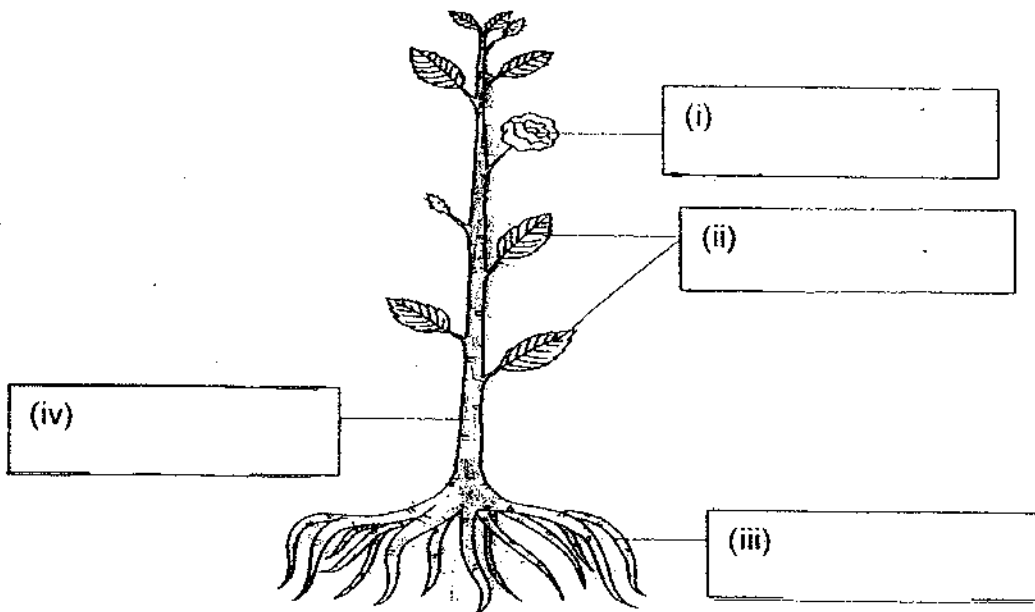
(a) From the picture above, in which group of animals would you place **Animal R**? [1]

---

(b) Based on what characteristics did you group **Animal R** in (a)? [1]

---

24. Study the diagram below.



- (a) **Label** the parts of the plant in the boxes provided above. [4]
- (b) What happens when part (iii) is missing? Explain your answer. [2]

---

---

25. Study the two animals shown below.



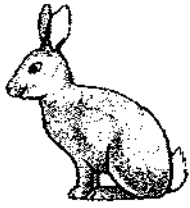
- (a) From the pictures above, state one **similarity** between the two animals. [1]
- (b) From the pictures above, state one **difference** between the two animals. [2]

---

26. Match each animal to their correct outer covering.

[4]

(a)



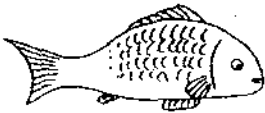
• Shell

(b)



• Scales

(c)

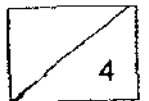


• Hair

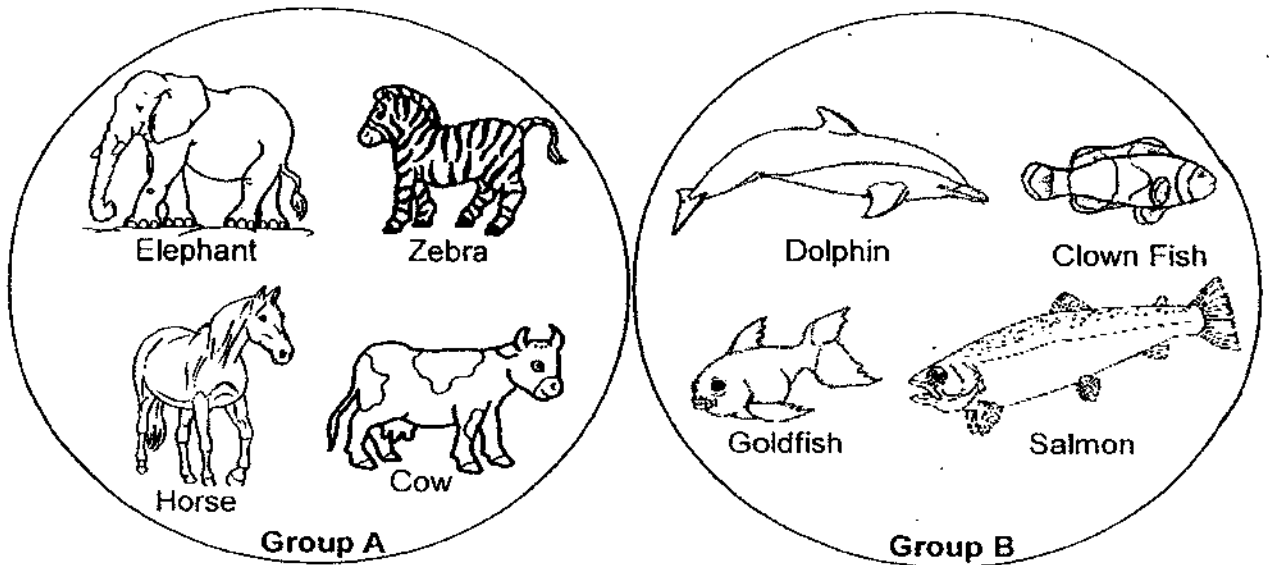
(d)



• Feathers



27. Study the two groups of animals shown below.



(a) Which animal is grouped **wrongly**? [1]

\_\_\_\_\_

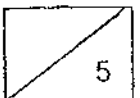
(b) Give a reason for your answer in (a). [2]

\_\_\_\_\_  
\_\_\_\_\_

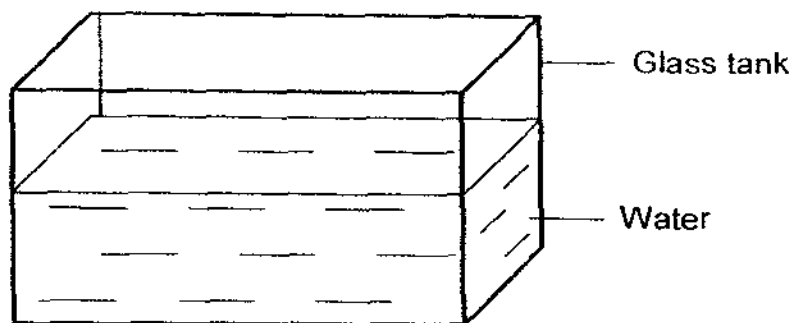
(c) Suggest **another** suitable heading for group A and B if all the animals in both groups are grouped correctly. [2]

**Group A:** \_\_\_\_\_

**Group B:** \_\_\_\_\_



28. Tammy wanted to find out if an object floats or sinks. She used the set-up shown in the diagram below for her experiment.



Tammy dropped the following objects into the glass tank.

Apple	Iron nail	Cork	Marble
Ping pong ball	Metal spoon	Stapler	Inflated balloon

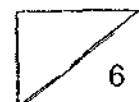
- (a) Record her results in the classification table below. [4]

Group P	Group Q

- (b) Based on her classification table in (a), give a suitable heading for **Group P** and **Group Q**. [2]

**Group P:** \_\_\_\_\_

**Group Q:** \_\_\_\_\_



863

29. Darren wants to buy a feeding bowl for his pet dog. His dog likes to chew on things and play with its feeding bowl. At the pet shop, Darren saw three bowls on sale – a metal bowl, a plastic bowl and a glass bowl.

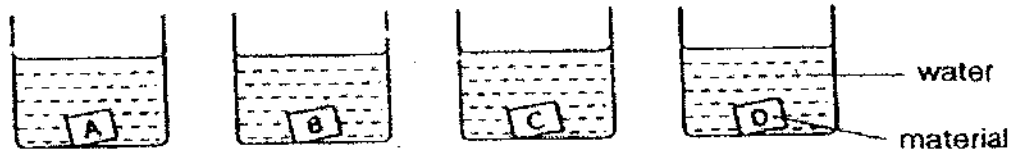
(a) Which bowl should Darren buy? [1]

\_\_\_\_\_

(b) Why did Darren choose the bowl in (a) instead of the other two? [2]

\_\_\_\_\_  
\_\_\_\_\_

30. Danny carried out an experiment to find out how much water each material can absorb. He placed four different materials A, B, C and D into container with 50ml of water each as shown in the diagram below. He removed the materials and recorded the amount of water left in each container after 20 minutes as shown in the table below.



Material	Amount of water left in container (ml)
A	48
B	35
C	50
D	28

(a) Which material absorbed the most amount of water? How much water did it absorb? [1]

\_\_\_\_\_

(b) Which of the materials, A, B, C or D is suitable for making the following objects? Give a reason for your answers. [4]

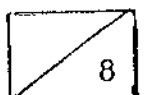
(i) Raincoat : \_\_\_\_\_

\_\_\_\_\_

(ii) Mop : \_\_\_\_\_

\_\_\_\_\_

END OF PAPER



# ANSWER SHEET

**EXAM PAPER 2009**

**SCHOOL : MAHABODHI PRIMARY  
SUBJECT : PRIMARY 3 SCIENCE**

**TERM : SA1**

Q1	Q2	Q3	Q4	Q5	Q6	Q7	Q8	Q9	Q10	Q11	Q12	Q13	Q14	Q15	Q16	Q17
2	1	2	1	4	1	2	3	3	2	4	3	2	3	2	4	1

Q18	Q19	Q20
4	3	2

21)a) B D  
A C

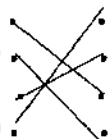


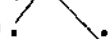
b) X: Living things Y: Non-living things

22)a) The peach has only one seed while the apple has more than one seed.  
b) mango. Both fruits have one seed.

23)a) I would place animal R in the insect group.  
b) It has six legs and three body parts.

24)a) i) flower ii) leaves iii) roots iv) stem  
b) The plant will die, the roots absorb water and mineral salts for the plant.

25)a) Both animals have wings.  
b) The bat has hair while the eagle has feathers.

26)a)   
b)   
c)   
d) 

27)a) The dolphin is grouped wrongly.  
b) It is a mammal because it has hair on its body.  
c) A: Animals that live on land.  
B: Animals that live in water.

28)a)P: Apple, Cork, Inflated balloon, Ping pong ball.

Q: Iron nail, Marble, Metal spoon, Stapler.

b)P: Floats in water.

Q: Sinks n water.

29)a)Darren should buy the metal bowl.

b)Metal is hard and strong, so it will not break easily, whenever his dog chews or plays with it.

30)a)material D absorbed the most amount of water, it absorb 22ml of water.

b)i)material C. It did not absorb any water and the raincoat needs to be waterproof.

ii)Material D, A mop should be wet in order to clean the floor and it absorbs the most amount of water.