



RED SWASTIKA SCHOOL

RED SWASTIKA SCHOOL

2009 SEMESTRAL ASSESSMENT 1

SCIENCE

Name : _____ ()

Class : Primary 3/ ____

Date : 7 May 2009

BOOKLET A

30 Questions

60 Marks

Duration of Paper: 1 hour 15 minutes

Note:

1. Do not open this Booklet until you are told to do so.
2. Questions 1 – 30 are to be done on the OAS provided.
3. Read carefully the instructions given at the beginning of each part of the Booklet.
4. Do not waste time. If a question is difficult for you, go on to the next one.
5. Check your answers thoroughly and make sure you attempt every question.

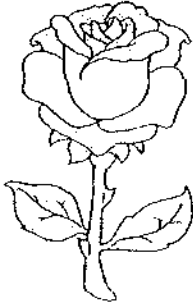
Section A :Multiple Choice Questions (30 X 2 marks each)

Choose the most suitable answer and shade its number in the OAS provided.

1. Which one of the following is a non-living thing?

- (1) Polar bear
- (2) Kingfisher
- (3) Water lily
- (4) Dried leaves

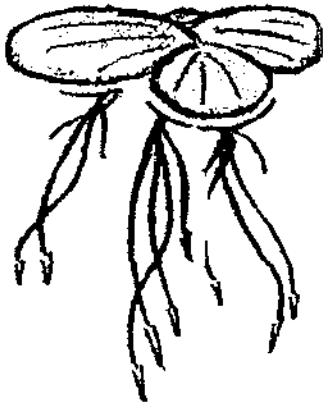
2. Which one of the following plants lives in water?



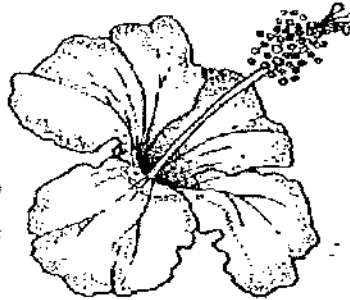
(1) Rose



(2) Orchid



(3) Duckweed



(4) Hibiscus

3. Which one of the animals eats plants only?

- (1) Goldfish
- (2) Chicken
- (3) Whale
- (4) Elephant

4. The material that is usually used to make an eraser is _____.

- (1) wood
- (2) rubber
- (3) metal
- (4) glass

5. Which part of a bear helps it to see?



- (1) A
- (2) B
- (3) C
- (4) D

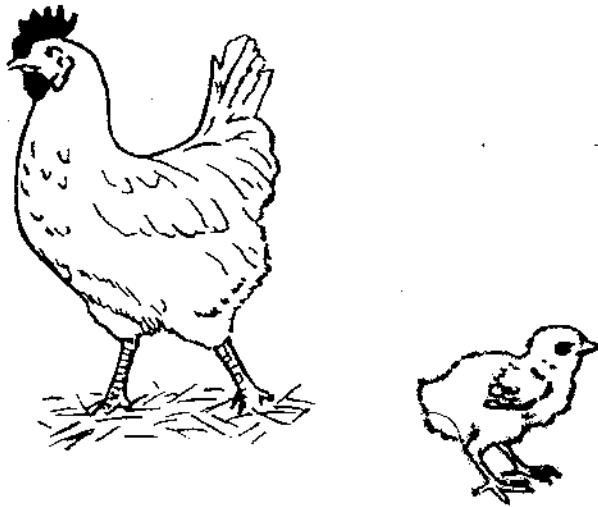
6. Xiao Qiang gave a riddle to his friends:

"This animal lives in the water.
It gives birth to its young alive.
It breathes through its lungs."

What could this animal be?

- (1) fish
- (2) penguin
- (3) shark
- (4) dolphin

7. This picture shows the adult of an animal and its young.



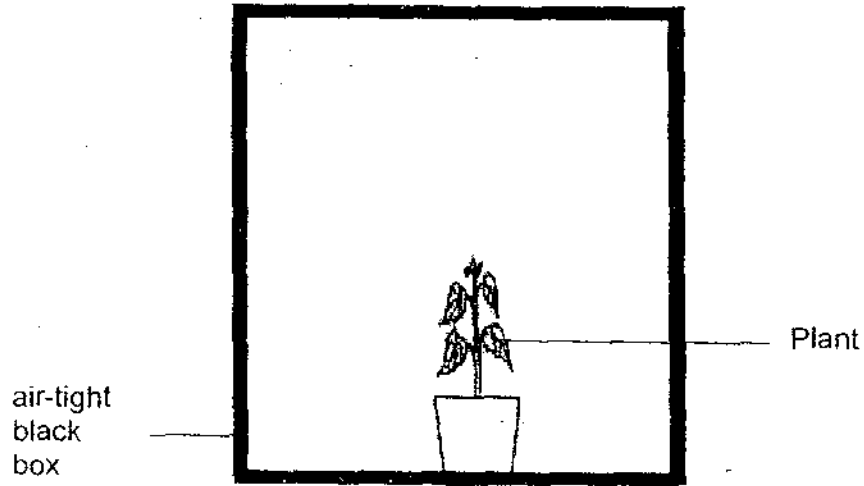
Which of the following statement about this adult animal and its young is not correct?

- (1) They need air, food and water to stay alive.
- (2) They can move around on their own.
- (3) They respond to changes in the day time only.
- (4) They depend on other living things for food.

8. Which one of the following best describes plants and fungi?

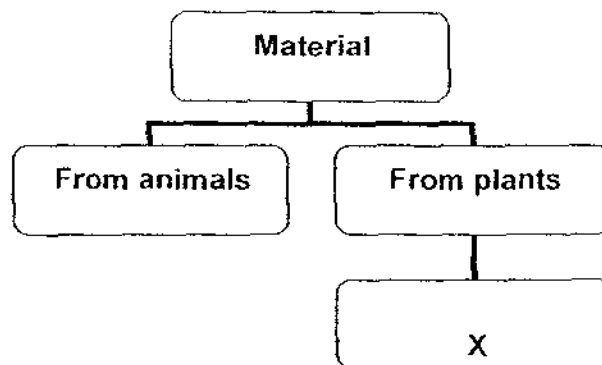
	Plants	Fungi
(1)	Cannot make food	Can make food
(2)	Respond to changes	Cannot respond to changes
(3)	Able to reproduce	Not able to reproduce
(4)	Makes their own food	Rely on others for food

9. Ali placed a pot of plant into an air-tight black box as shown. He did not open the box after he had put the plant in. One week later, he noticed that the plant died. Why is this so?



- (1) The plant was not given enough fertilisers.
- (2) The plant did not have enough space.
- (3) The plant did not have enough air.
- (4) The plant was given dirty water.

10.

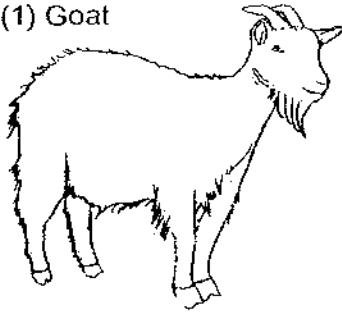


Based on the chart above, which one of the following can be put in the box marked "X"?

- (1) Metal ruler
- (2) Iron nail
- (3) Plastic spoon
- (4) Wooden chopstick

11. Which one of the following does not reproduce in the same way as the others?

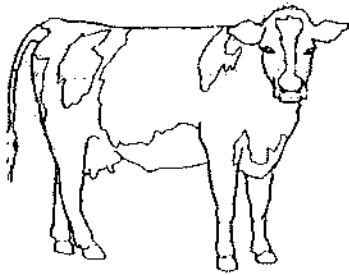
(1) Goat



(2) Platypus



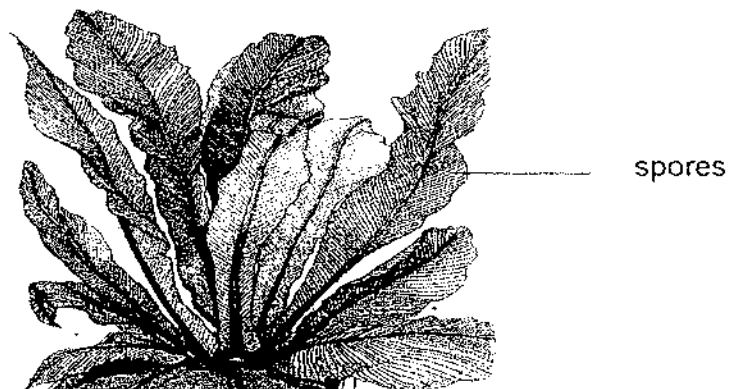
(3) Cow



(4) Cat



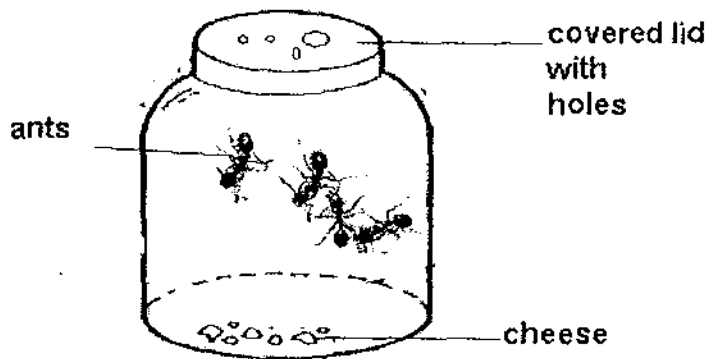
12. The picture below shows the leaves of a bird's nest fern.



The spores under the leaves are for _____

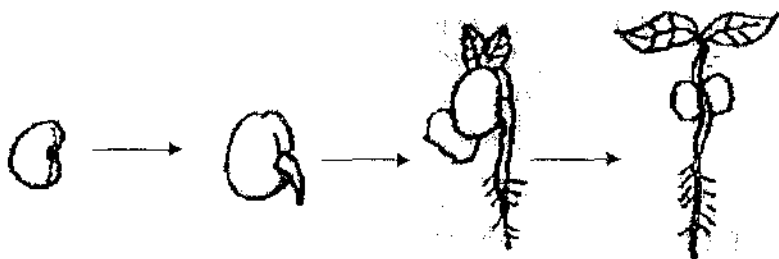
- (1) producing new ferns.
- (2) the fern to look nice.
- (3) carrying food to the other parts of plants.
- (4) carrying water to the other parts of plants.

13. Lily caught a few ants and put them in a jar as shown below. What is likely to happen to the ants after two weeks?



The number of ants will most likely _____.

- (1) increase
 - (2) decrease
 - (3) decrease then increase
 - (4) remain the same
14. Animals get food by eating plants, animals or both. Green plants get food by _____.
- (1) making their own
 - (2) taking it from the sun
 - (3) taking it from the soil
 - (4) waiting for man to feed them
15. John grew some green beans with moist cotton wool in a paper cup. As the days passed, he made some drawings of one of the beans as shown below.



This shows that the bean is _____.

- (1) dying
- (2) growing
- (3) reproducing
- (4) flowering

16. Peter grouped some animals into the following groups:

snail
earthworm

eagle
sparrow

guppy
goldfish

They are grouped according to the way they _____.

- (1) reproduce
- (2) move
- (3) feed
- (4) keep warm

17. Which one of the following about fungi is correct?

- (1) Fungi are plants and they contain chlorophyll.
- (2) Fungi are plants but they do not contain chlorophyll.
- (3) Fungi are not plants and they do not contain chlorophyll.
- (4) Fungi are not plants but they make chlorophyll

18. Four pupils made the following statements about birds:

Albert: All birds can fly.

Benny: All birds have feathers.

Charlie: All birds have a beak.

Danny: All birds have two feet.

Whose statement is incorrect?

- (1) Albert
- (2) Benny
- (3) Charlie
- (4) Danny

19. In order to see bacteria clearly, scientists use a _____.

- (1) stethoscope
- (2) thermometer
- (3) binoculars
- (4) microscope

20. Samad caught the following animals from the garden. Which one of the following is not an insect?

- (1) grasshopper
- (2) dragonfly
- (3) spider
- (4) butterfly

21. Samy listed some characteristics of insects. Which one of the following is correct?

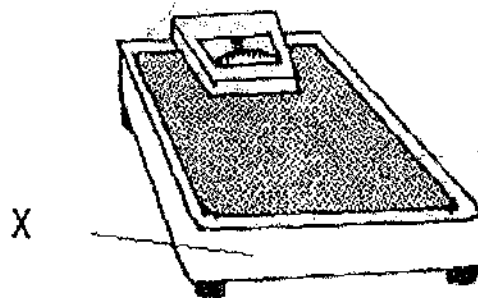
- (1) They can fly.
- (2) They have two body parts.
- (3) Most reproduce by laying eggs.
- (4) They have no outer body coverings.

22. Mechanical pencils can be made from _____.

- A: rubber
- B: metal
- C: plastic
- D: sand

- (1) A and B only
- (2) B and C only
- (3) A, B and C only
- (4) A, B and D only

23. The picture below shows a weighing scale. Part X is usually made of metal because _____.



- (1) it is strong
- (2) it is flexible
- (3) it can rust
- (4) it is expensive

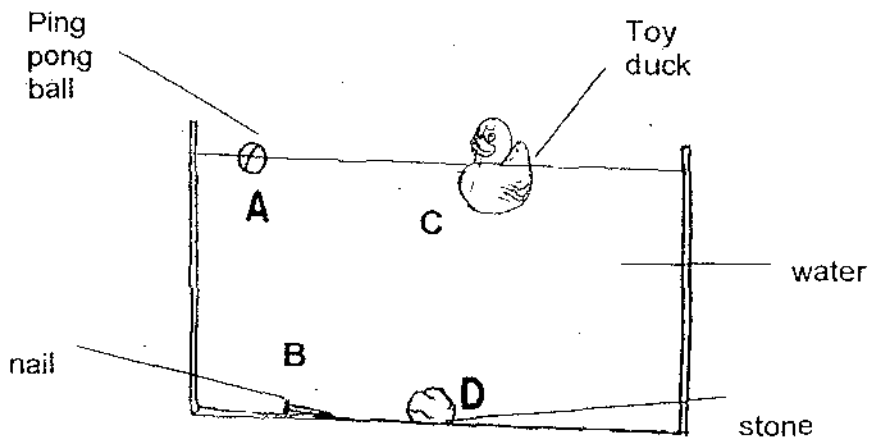
24. The table below shows the characteristics of four materials.

	Material A	Material B	Material C	Material D
Absorbs water	No	Yes	No	Yes
Light	Yes	Yes	Yes	No
Flexible	No	Yes	Yes	No

Which material is most suitable for making a raincoat?

- (1) A
- (2) B
- (3) C
- (4) D

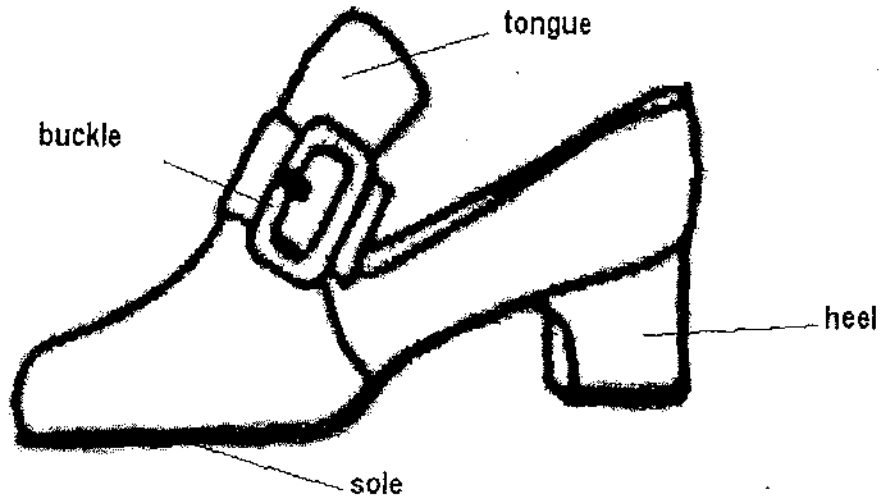
25. Mr Tan placed 4 objects into a tank of water. The picture below shows the results of his experiment.



Which one of the following comparison is correct ?

	Float	Sink
(1)	A and D	B and C
(2)	A and C	B and D
(3)	C and D	A and B
(4)	B and C	A and D

26. The parts of this shoe were made from different material.
Which one of the following reasons for using the material is wrong?

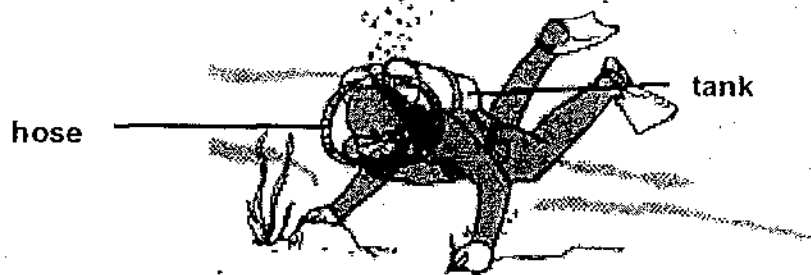


	Parts of shoe	Material	Reason for using that material
(1)	sole	rubber	Flexible
(2)	heel	wood	Flexible
(3)	tongue	leather	Last longer
(4)	buckle	metal	Last longer

27. Two of the materials have been wrongly grouped.
Which are the two?

	Man made material	Natural material
(1)	nylon	silk
(2)	silk	plastic
(3)	polyester	rubber
(4)	canvas	wood

28. This diver is wearing a diving suit.



Which one of the following correctly matches the materials that are used to make the tank and the hose?

	Material used to make the tank	Material used to make the hose
(1)	rubber	plastic
(2)	metal	cloth
(3)	rubber	metal
(4)	metal	rubber

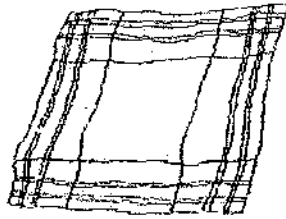
29. Study the table below showing the number of pupils in a class who brought different types of water bottles to school.

Number of pupils who used it	Reason it was chosen
16	Light
9	Hard
5	Big
10	Strong

The most number of pupils chose their water bottles according to the water bottle's _____.

- (1) strength
- (2) size
- (3) weight
- (4) hardness

30. This table shows different materials and their properties. Below is a picture of a handkerchief that Gopal has.



handkerchief

Materials	Flexibility	Strength	Hardness
A	☆☆☆	☆☆	☆☆☆
B	☆	☆☆☆	☆
C	☆☆☆☆☆☆	☆☆	
D	☆☆	☆☆☆	☆

☆ : the star represents the property found in each material.

Based on the table above, which material should Gopal choose to make his handkerchief?

- (1) A
- (2) B
- (3) C
- (4) D



RED SWASTIKA SCHOOL

RED SWASTIKA SCHOOL

2009 SEMESTRAL ASSESSMENT 1

SCIENCE

Name : _____ ()

Class : Primary 3/ ____

Date : 7 May 2009

BOOKLET B

14 Questions
40 Marks

MARKS

	OBTAINED	POSSIBLE
BOOKLET A		60
BOOKLET B		40
TOTAL		100

Parent's Signature: _____

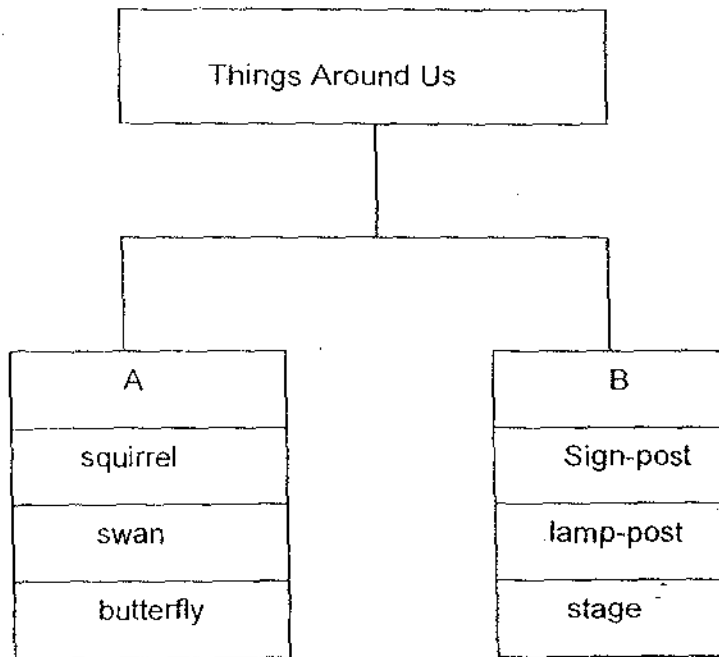
Section B : Open-ended questions (14 Questions :40 marks)

Write your answers to the following questions in the spaces provided.

31. There is a need for a diversity of living things around us because

living things _____ on other living things and
_____ things. (2m)

32. Study the chart below.



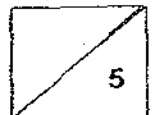
(a) Give a suitable heading for A and B. (2m)

A: _____

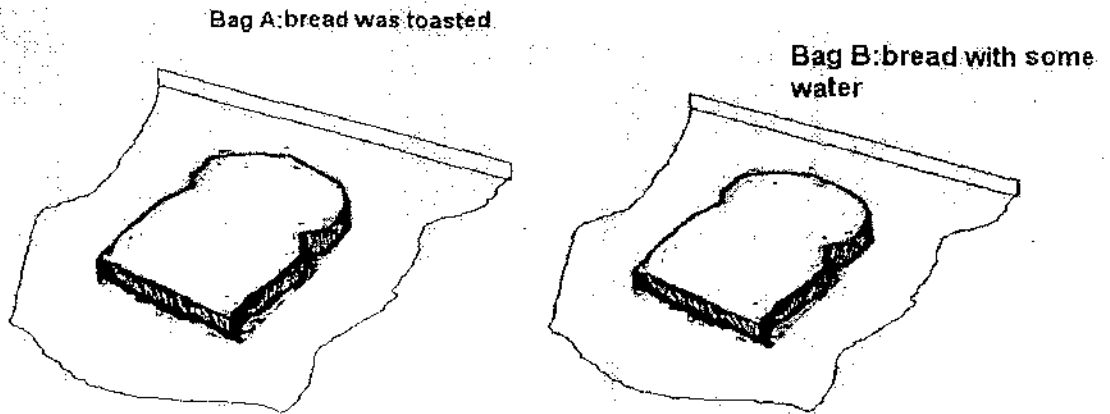
B: _____

(b) In which group would you put "roller skates"? (1m)

In group : _____



33. John bought a thick piece of bread and cut it into 2 equal slices. He toasted one slice and placed it in Bag A. He put some water on the other piece and placed it in Bag B. He then left the two slices of bread on the kitchen table for a week.

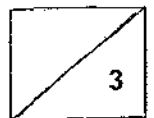


(a) What will happen to the bread after a week? (2m)

Bread in Bag A: _____

Bread in Bag B: _____

(b) Explain your answer for the bread in Bag B. (1m)



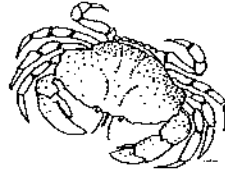
34. Study the pictures as shown:



A



B

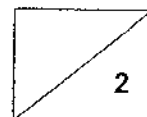
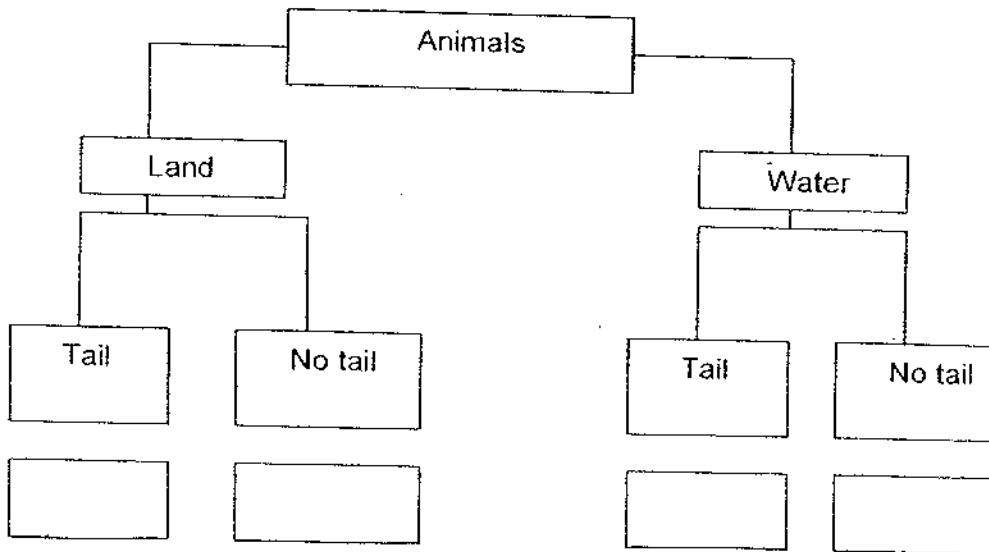


C



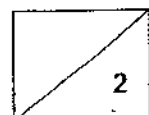
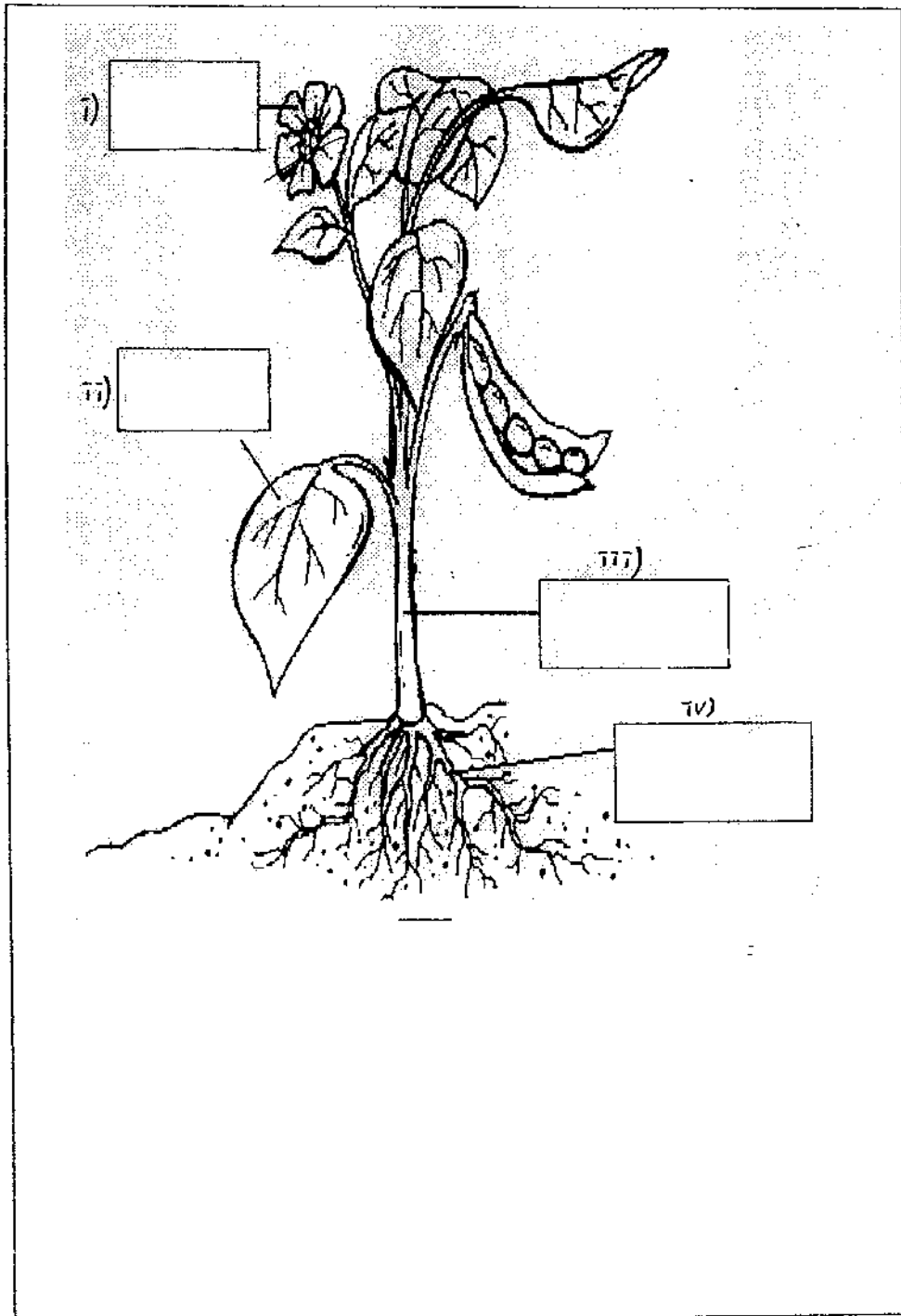
D

Then look at the chart below carefully and fill in the boxes with the four letters A, B C and D. (2m)



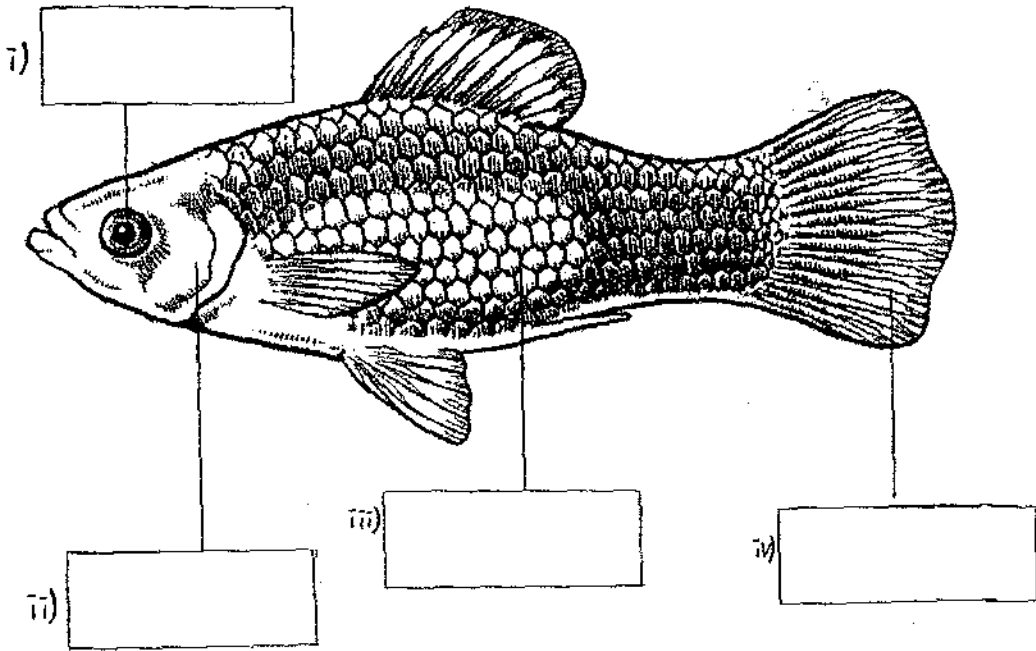
35. Below is a diagram of a plant.

Label the parts of the plant in the boxes provided. (2m)



36. Junjie drew a fish and wanted to label its body parts.
Help him to label the following parts (2m) :

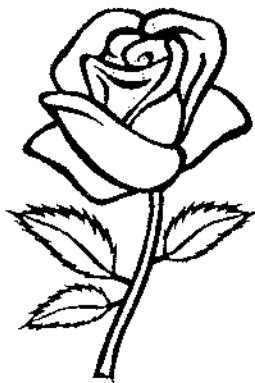
scales, fin, eye, gill cover



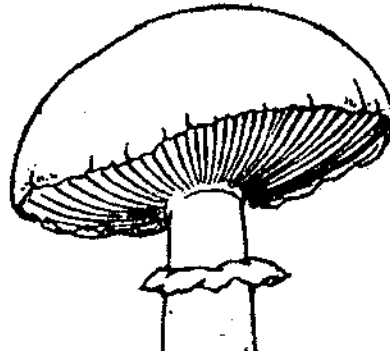
2

37. Study the following pictures carefully.

- (a) State two differences between the rose plant and the mushroom. (2m)
(Do not compare shape and size)



rose plant

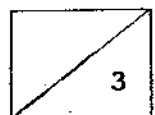


mushroom

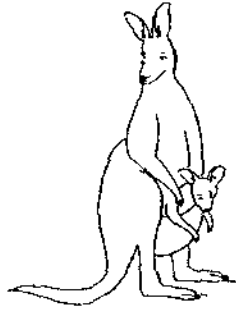
Difference 1: _____

Difference 2: _____

- (b) Which part of the rose plant enables it to take in water? (1m)



38. Mary visited the zoo. She saw the following things there.



kangaroo



rabbit



zebra



grass

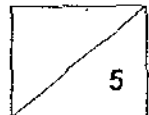
(a) Which one of the above does not belong to the same group as the rest? (1m)

(b) Explain your answer in part (a). (2m)

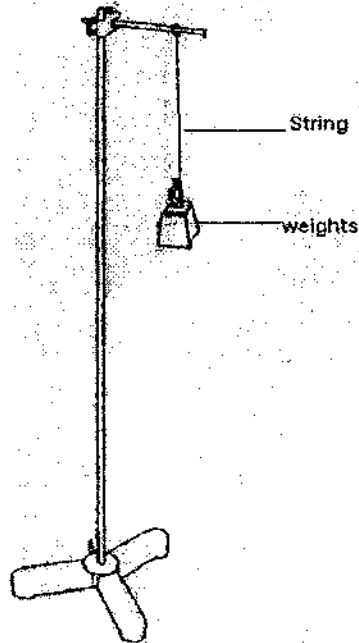
39. A locksmith wanted to duplicate a key. He was given two materials: plastic and metal.

(a) Which material should he choose to duplicate the key? (1m)

(b) Explain your answer in part (a) (1m)



40. Mr Li set up the following experiment to test the strength of 3 types of strings.



He added weights until the string broke. The table shows the results

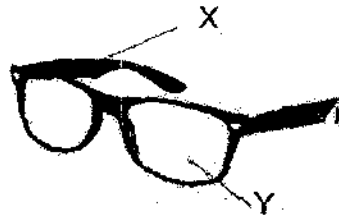
	String A	String B	String C
Weights before the string broke	400g	100g	700g

(a) Based on the results, what can you conclude about string C? (1m)

(b) Which is the most suitable string to hold a 500 g weight? (1m)

(c) Which string(s) can be used to hold a 50g weight? (1m)

41. Below is a picture of a pair of spectacles.



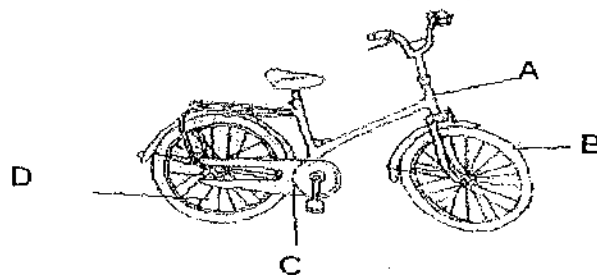
(a) Name the materials which X and Y can be made of. (2m)

X: _____

Y: _____

(b) Why must part Y be made of the material you have chosen? (2m)

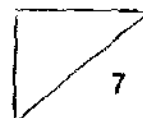
42. This is the picture of a bicycle which Mary uses to cycle to school everyday.



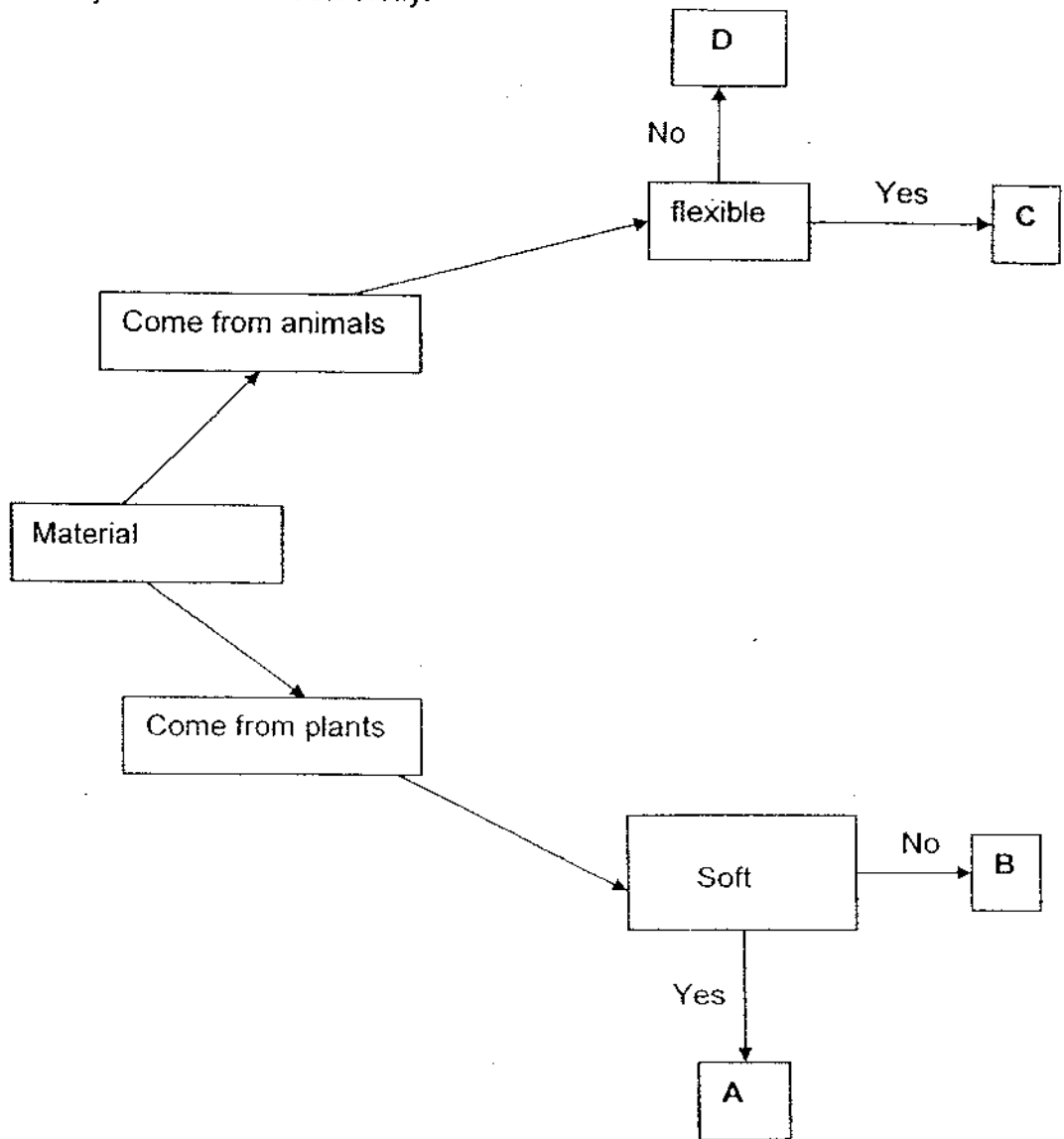
(a) Put the letter A,B,C and D correctly in the boxes below. (2m)

Made of metal	Made of glass	Made of rubber

(b) For safety reasons, Mary should have something on her bicycle which is missing from the picture above. What is this item? (1m)



43. Study this flow chart carefully.



(a) Where should "cotton cloth" and "leather belt" be placed ?
Write the correct letter A, B, C or D in the boxes below. (2m)

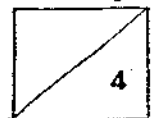
(i) cotton cloth :

(ii) leather belt :

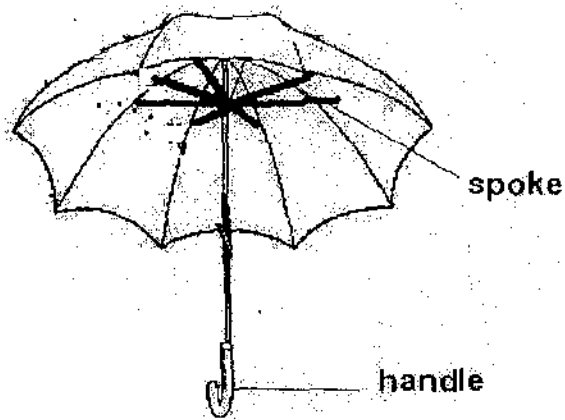
(b) Based on the chart, write down one characteristic of the following: (2m)

(i) cotton cloth : _____

(ii) leather belt : _____



44. This picture shows the parts of an umbrella.



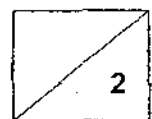
(a) Give a reason why the labelled parts are made of the material mentioned. (2m)

(i) The handle is made of plastic.

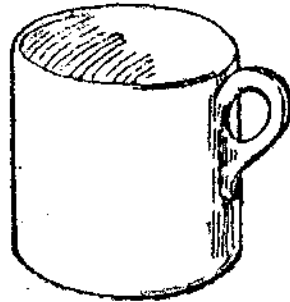
The reason is: _____

(ii) The spoke is made of metal.

The reason is: _____

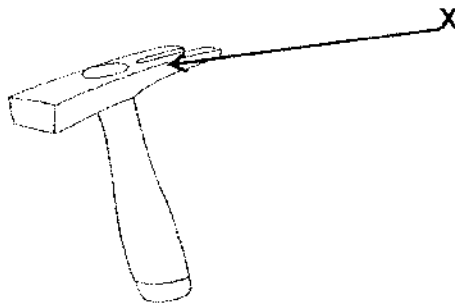


- (b) Below is a picture of a cup. Mary's two-year-old sister uses it to drink milk. She accidentally dropped the cup. However, the cup did not break.



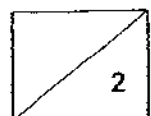
What material is the cup likely to be made of? (1m)

- (c) Below is a picture of a hammer. It can be used to hit an iron nail into a piece of wood.



Part X is usually made of metal. Explain why. (1m)

END OF PAPER



ANSWER SHEET

EXAM PAPER 2009

SCHOOL : RED SWASTIKA PRIMARY

SUBJECT : PRIMARY 3

TERM : SA1 - SCIENCE

Q1	Q2	Q3	Q4	Q5	Q6	Q7	Q8	Q9	Q10	Q11	Q12	Q13	Q14	Q15	Q16	Q17
4	3	4	2	2	4	3	4	3	4	2	1	2	1	2	2	3

Q18	Q19	Q20	Q21	Q22	Q23	Q24	Q25	Q26	Q27	Q28	Q29	Q30
1	4	3	3	3	1	3	2	2	2	4	3	3

31)depend

32)a)A: Living things B: non-living things

b)B

33)a)A: The bread remain the same.

B: The bread have moulds.

b)There is moisture that cause the moulds to grow.

34)A, B, D, C

35)i)flower ii)leaf iii)stem iv)roots

36)i)eye ii)gill iii)scales iv)fin

37)a)Difference 1: The rose plant has leaves but the mushroom does not have.

Difference 2: The rose plant have flower but the mushroom does not have flower.

b)They are roots.

38)a)The grass does not belong to the same group as the rest.

b)The grass is a plant but others are animals.

39)a)Metal should be choose to duplicate the key.

b)The metal is hard and strong to open the door but the plastic not hard and strong to open the door, it will beak.

- 40) a) String C is the strongest.
b) The string is string C.
c) A, B and C can be used to hold a 50g weight.

- 41) a) X: Plastic. Y: Glass
b) It is because glass is transparent so we can see.

- | <u>42) a) Made of metal</u> | <u>Made of glass</u> | <u>Made of rubber</u> |
|-----------------------------|----------------------|-----------------------|
| C | | B |
| D | | |
| A | | |

b) It is a bicycle light.

- 43) a) i) A ii) C
b) i) It is soft. ii) It is flexible.

- 44) a) i) It is light. ii) It is strong/durable.
b) The cup likely to be made of metal.
c) It is because the metal is strong so it can hit hard things.