



RED SWASTIKA SCHOOL

# RED SWASTIKA SCHOOL

## 2009 CONTINUAL ASSESSMENT 1

### SCIENCE

Name : \_\_\_\_\_ (     )

Class : Primary 4/ \_\_\_\_

Date : 5 March 2009

### BOOKLET A

30 Questions

60 Marks

Duration of Paper : 1 hour 30 minutes

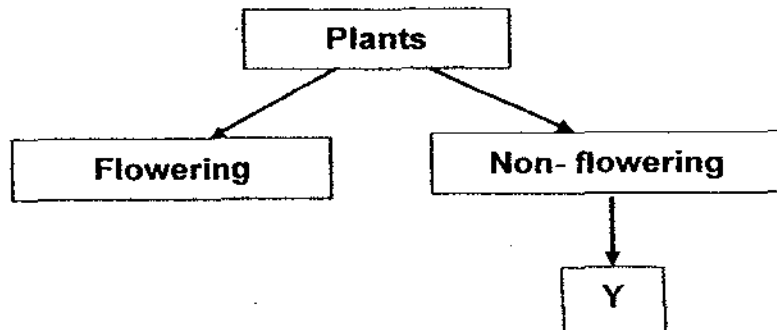
Note:

1. Do not open this Booklet until you are told to do so.
2. Questions 1 - 30 are to be done on the OAS provided.
3. Read carefully the instructions given at the beginning of each part of the Booklet.
4. Do not waste time. If a question is difficult for you, go on to the next one.
5. Check your answers thoroughly and make sure you attempt every question.

**Section A: MCQ (30 Questions x 2 marks = 60 marks)**

Choose the most suitable answer and shade its number in the OAS provided.

- 1. Living things need \_\_\_\_\_ to stay alive.
  - (1) air and water only
  - (2) air, food and water
  - (3) water and food only
  - (4) space to move and grow
  
- 2. Which one of the following is a characteristic of **all** birds?
  - (1) They can fly.
  - (2) They lay eggs.
  - (3) They can swim.
  - (4) They have hair.
  
- 3. What is the method of reproduction of fungi?
  - (1) By seeds
  - (2) By spores
  - (3) By giving birth
  - (4) By laying eggs
  
- 4. The classification chart below shows how Y is classified.



Which one of the following is correct about Y?  
Y is most likely \_\_\_\_\_.

- (1) a fern
- (2) grass
- (3) a mould
- (4) Hibiscus



5. What are the similarities of the animals shown above?

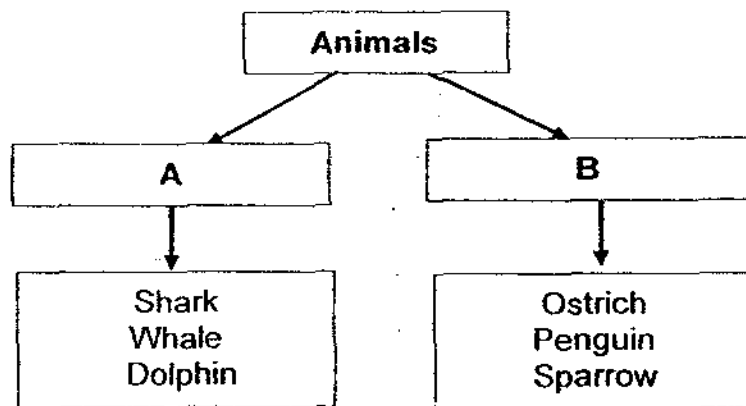
- A. They have two body parts.
- B. They have three pairs of legs.
- C. They only fly to move around.
- D. ~~The~~ they reproduce by laying eggs.

- (1) A and B only
- (2) A and C only
- (3) B and D only
- (4) C and D only

6. Fauzi wants to give a cup of orange juice to his three-year-old brother. Which one of the following is the best cup to use?

- (1) clay cup
- (2) glass cup
- (3) plastic cup
- (4) ceramic cup

7. Muthu classified two groups of animals as shown below.



Which animal is classified **wrongly**?

- (1) Shark
- (2) Ostrich
- (3) Dolphin
- (4) Penguin

8. Some black spots were found on a piece of stale bread that was left on the table. These black spots are most likely \_\_\_\_\_.

- (1) algae
- (2) moss
- (3) mould
- (4) mushrooms

9. Which of the four systems is correctly matched to its function?

	<b>System</b>	<b>Function</b>
(1)	Muscular	Takes oxygen into the body
(2)	Digestive	Carries food, water and oxygen to all parts of the body
(3)	Skeletal	Supports the body
(4)	Circulatory	Breaks down food into simpler substances

10. What do plants need in order to make food?

- (1) Water, oxygen and sunlight
- (2) Water, carbon dioxide and sunlight
- (3) Nutrients, water and carbon dioxide
- (4) Nutrients, carbon dioxide and sunlight

11. The food that the carrot plant stores is made in its \_\_\_\_\_.

- (1) stem
- (2) roots
- (3) leaves
- (4) flowers

12. Which one of the actions below involves the muscular system?

- A. Writing
- B. Thinking
- C. Frowning
- D. Sticking out your tongue

- (1) A only
- (2) B and C only
- (3) A, C and D only
- (4) A, B, C and D

13. A young seedling can grow from a seed under favourable conditions. Which one of the following statements about the seedling is true?

- (1) The shoot of the seedling grows downwards.
- (2) The seed leaves get bigger as the plant grows.
- (3) The roots of the seedling grow towards the sunlight.
- (4) The seed needs air, warmth and water to develop into a seedling.

14. The table below shows the differences between plants and fungi. Which comparison is correct?

	Green plants	Fungi
(1)	Grow on land	Grow in water
(2)	Can make food	Cannot make food
(3)	Are light in colour	Are bright in colour
(4)	Do not need sunlight to grow	Need sunlight to grow

15. Why is the leaf important to a plant?

- A. It helps to take in oxygen.
- B. It helps to take in carbon dioxide.
- C. It helps to make food.

- (1) B only
- (2) C only
- (3) B and C only
- (4) A, B and C

16. The box below shows parts of the digestive system. Arrange in the correct order to show how digestion takes place.

A	anus
B	gullet
C	mouth
D	stomach
E	large intestine
F	small intestine

- (1) C-B-D-F-E-A
- (2) C-D-F-E-B-A
- (3) C-B-E-D-F-A
- (4) C-F-E-B-D-A

17. Which of the following system works together with the digestive system to push food from the mouth to the stomach?

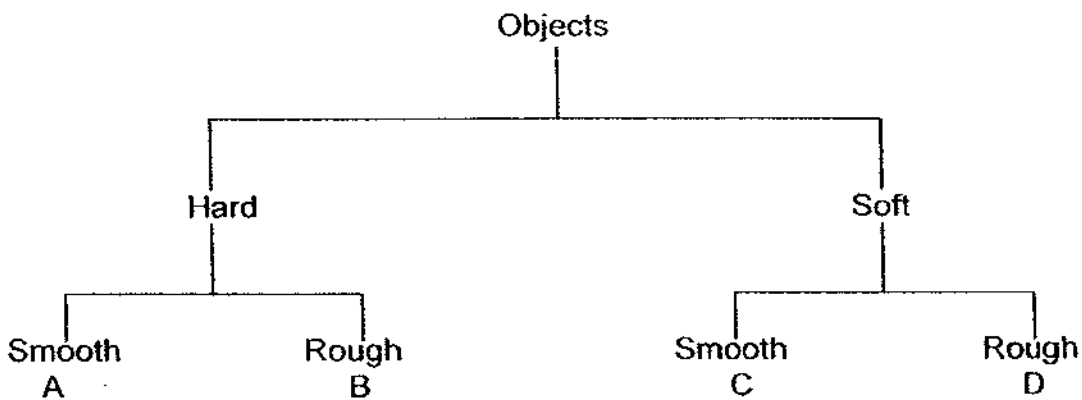
- (1) Muscular system
- (2) Skeletal system
- (3) Circulatory system
- (4) Respiratory system

18. Which systems in our body help us to move?

- A. Skeletal
- B. Digestive
- C. Muscular
- D. Circulatory

- (1) B and C only
- (2) B and D only
- (3) A and C only
- (4) A, B and C

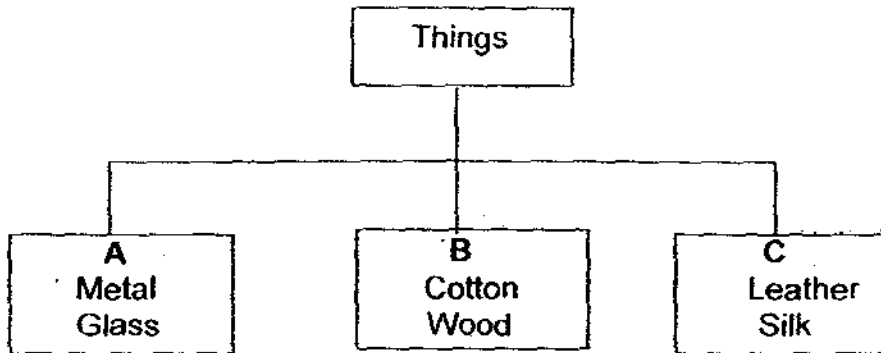
19. Study the classification table below.



Where would you place a silk scarf?

- (1) A
- (2) B
- (3) C
- (4) D

20. The table below shows the classification of some things.



Which of the following headings best represent A, B and C?

A	B	C
(1) From the ground	From plants	From animals
(2) From plants	From the ground	From animals
(3) From animals	From plants	From the ground
(4) From the ground	From animals	From plants

21. Which one of the following does not show that plants can move by themselves?

- (1) Leaves sway in the breeze.
- (2) The sunflower turns to face the sun.
- (3) Leaves of the rain tree fold up at night.
- (4) A mimosa plant closes its leaves when touched.

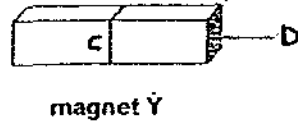
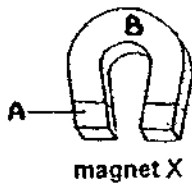
22. Jonas wants to find out if 4 objects of different materials float or sink in water. He records the results in the table as follows:

Material	Metal	Non-metal	It floats in water
S	√		√
T		√	
U	√		
V		√	√

Which material is most likely to be made of wood?

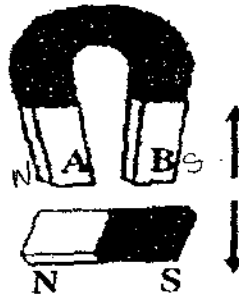
- (1) S
- (2) T
- (3) U
- (4) V

23. Based on the magnets X and Y below, which of the following parts of the magnets can attract more pins?



- (1) A and C only  
(2) A and D only  
(3) B and C only  
(4) B and D only
24. Which of the following item(s) will be attracted by a magnet?
- A. Gold ring  
B. Iron sheet  
C. Silver spoon  
D. Nickel coin
- (1) A only  
(2) B only  
(3) B and D only  
(4) A, C and D
25. Which of the statements are true of magnets?
- A. Like poles repel.  
B. Like poles attract.  
C. Unlike poles repel.  
D. Unlike poles attract.
- (1) A and C only  
(2) A and D only  
(3) B and C only  
(4) B and D only

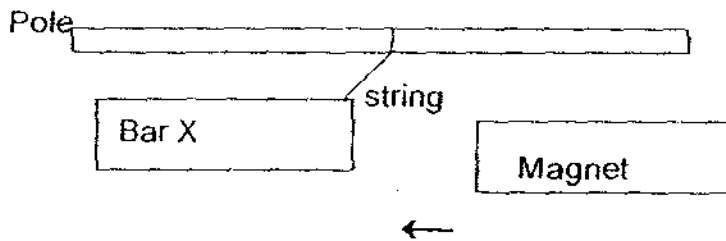
26. The arrows in the diagram show the directions moved by the 2 magnets when brought close to each other.



What are the poles at A and B?

	A	B
(1)	South	South
(2)	South	North
(3)	North	North
(4)	North	South

27. Hassan ties Bar X to a pole with a string. When he brings a magnet near to Bar X, he notices that Bar X moves away from the magnet as shown in the diagram below. Which of the following statements is/are true about Bar X?



- A. It is also a magnet.
- B. It can attract iron nails.
- C. It is made of silver.

- (1) A only
- (2) B only
- (3) A and B only
- (4) A, B and C

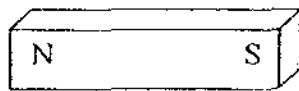
28. When an electric wire is coiled around an iron nail, the iron nail \_\_\_\_\_

- (1) melts
- (2) becomes hot
- (3) remains unchanged
- (4) has properties of a magnet

29. The pull of a magnet is **not** likely to pass through a \_\_\_\_\_

- (1) plastic wrapper
- (2) piece of steel plate
- (3) thick piece of wood
- (4) piece of tracing paper

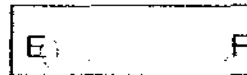
30.



Object X



Object Y



Object Z

The results in the table below show what happened when the south pole of a bar magnet was brought near to each end of the 3 objects X, Y and Z.

Ends	Attract	Repel	No change
A	√		
B	√		
C			√
D			√
E	√		
F		√	

Which object(s) is/are most likely a magnet?

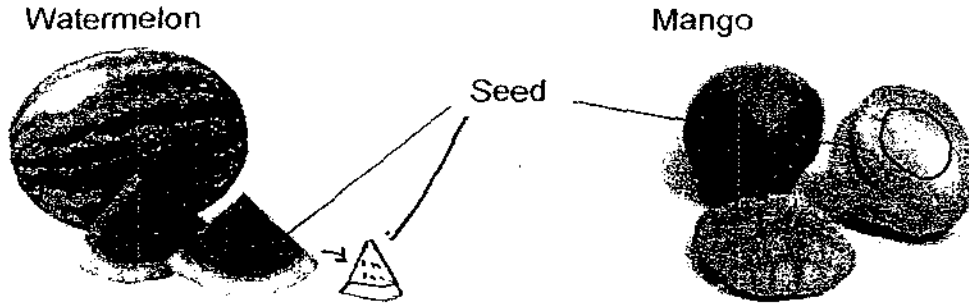
- (1) Object X only
- (2) Object Z only
- (3) Objects X and Y only
- (4) Objects Y and Z only

**End of Section A**  
Have you checked your work?

**Section B: Open-ended Questions (40 marks)**

Answer the following questions in the space provided.

31. Based on the pictures, give one similarity and one difference between the 2 fruits. Do not compare shape or size. (2m)



i) Similarity: \_\_\_\_\_

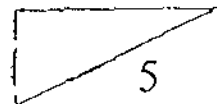
ii) Difference: \_\_\_\_\_

32. A construction worker is required to wear a safety helmet on site. The table below shows some materials and their properties.

	Material A	Material B	Material C
Hard	✓	✓	X
Waterproof	X	✓	✓
Flexible	X	X	✓
Break easily when dropped	X	X	X

- i) Which material is most suitable for making the safety helmet? (1 m)

- ii) Give 2 reasons for your answer above? (2m)





RED SWASTIKA SCHOOL

# RED SWASTIKA SCHOOL

## 2009 CONTINUAL ASSESSMENT 1

### SCIENCE

Name : \_\_\_\_\_ ( )

Class : Primary 4/ \_\_\_\_\_

Date : 5 March 2009

### BOOKLET B

14 Questions

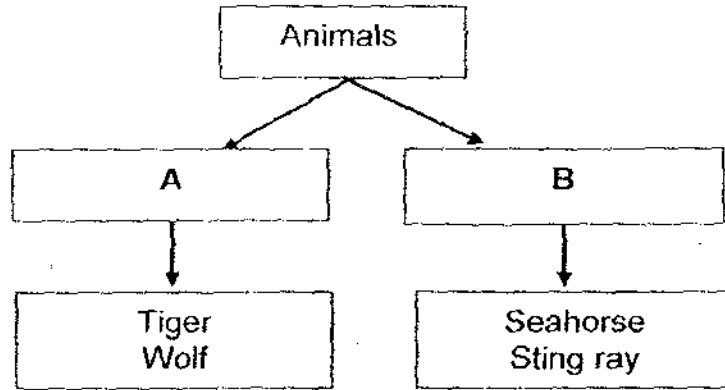
40 marks

#### MARKS

	OBTAINED	POSSIBLE
BOOKLET A		60
BOOKLET B		40
TOTAL		100

Parent's Signature : \_\_\_\_\_

33. Study the table below.



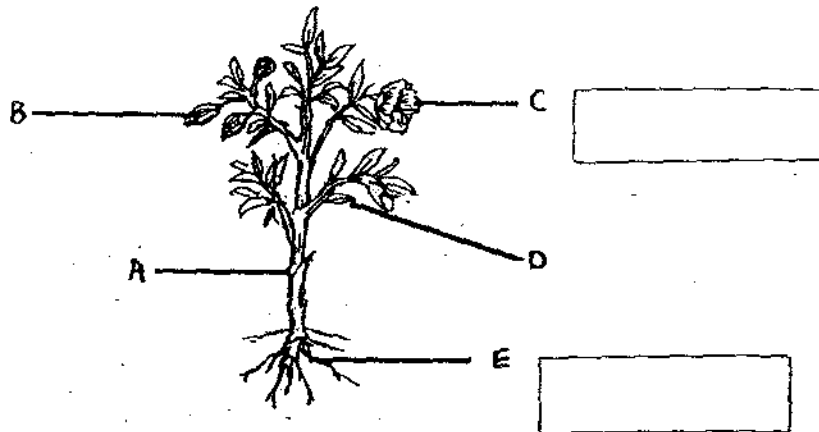
i) The above animals are grouped according to the way they move. In which group would you place a cheetah? (1m)

\_\_\_\_\_

ii) Name another animal that can be placed in Group B. Give a reason for your answer. (2m)

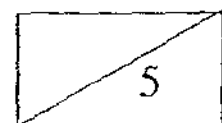
\_\_\_\_\_

34. i) Study the diagram below. Name part C and part E of the plant in the boxes provided. (1m)



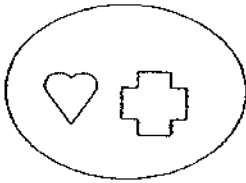
ii) In the box below, name the part of the plant that matches the function given. (1m)

Helps to transport food, water and mineral salts.	
Helps to take in gas and sunlight to make food.	

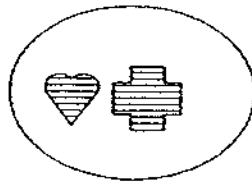


35.

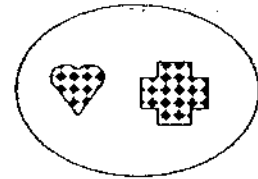
Group A




Group B



Group C

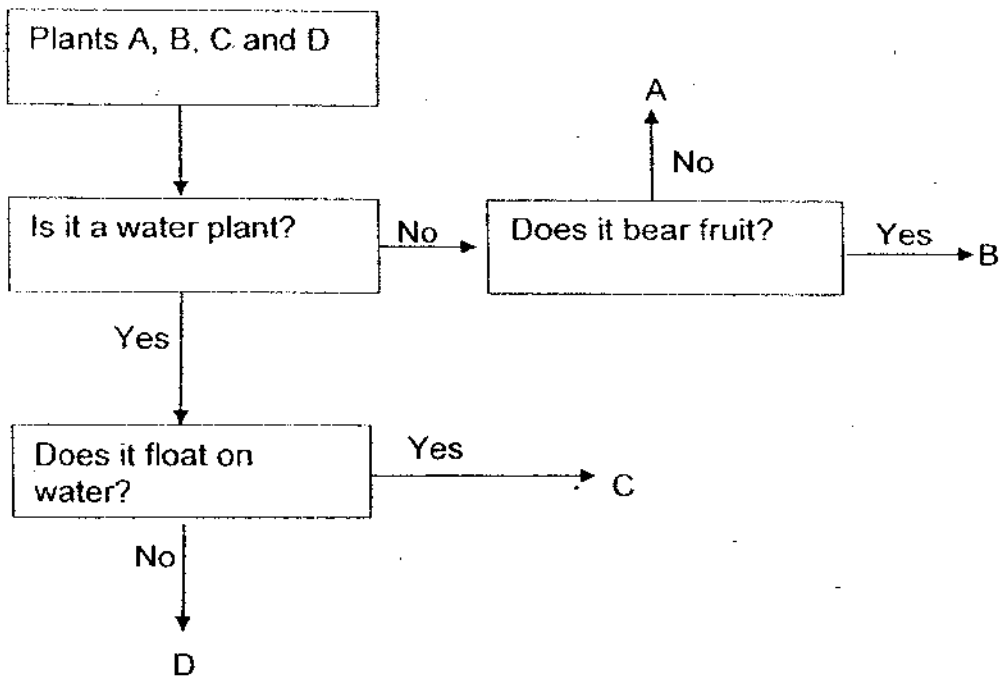


i) Based on the grouping of the symbols in the diagram above, which group would you place the symbol  ? (1m)

I would place it in Group \_\_\_\_\_

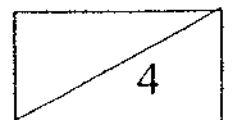
ii) The above symbols can also be regrouped according to their \_\_\_\_\_ (1m)

36. Study the flow chart below. (2m)

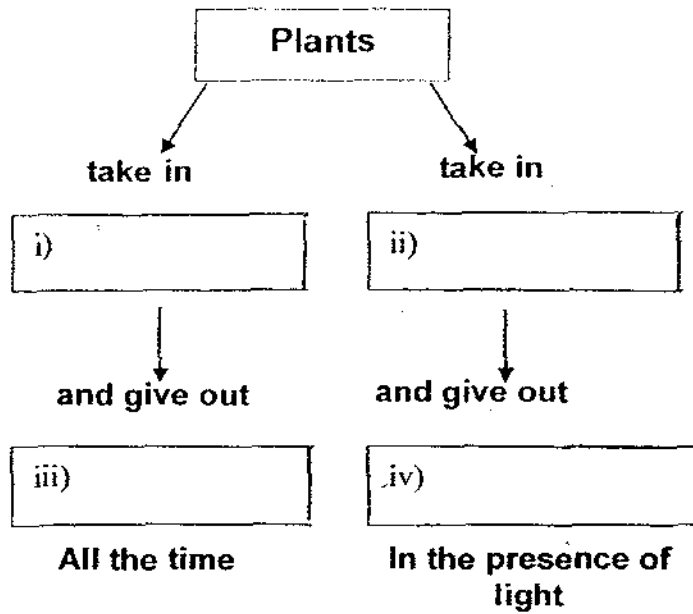


Based on the information above, use the letters A, B, C and D to complete the table below.

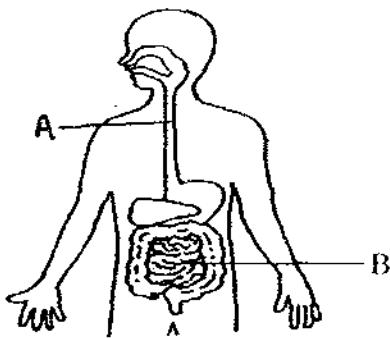
Rambutan	Duckweed	Stag horn fern	Cattail



37. Fill in the boxes with the correct names of gases. (2 m)



38. Study the picture below carefully.



a) Identify Part A and Part B. (2 m)

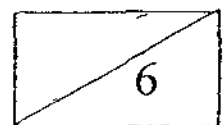
Part A: \_\_\_\_\_ Part B: \_\_\_\_\_

bi) Name the part(s) of the digestive system where digestive juices are added. (1m)

\_\_\_\_\_

ii) Name the part(s) of the digestive system where digestion is completed. (1m)

\_\_\_\_\_



39. The picture below shows a tomato plant.



i) What would happen to the plant after a few weeks if all the leaves are removed from it? (There are no new leaves growing.) (1m)

\_\_\_\_\_

ii) Explain your answer. (2m)

\_\_\_\_\_

\_\_\_\_\_

40. 4 potted plants A, B, C and D were placed in the sunlight for different lengths of time. Data on the growth of these plants were recorded below.

Plant	Number of hours in sunlight per day	Growth in centimeters in one week
A	4	1
B	6	4
C	8	6
D	10	3

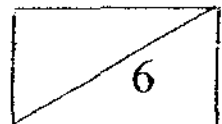
a) Which plant grew the most in one week? (1m)

Plant \_\_\_\_\_

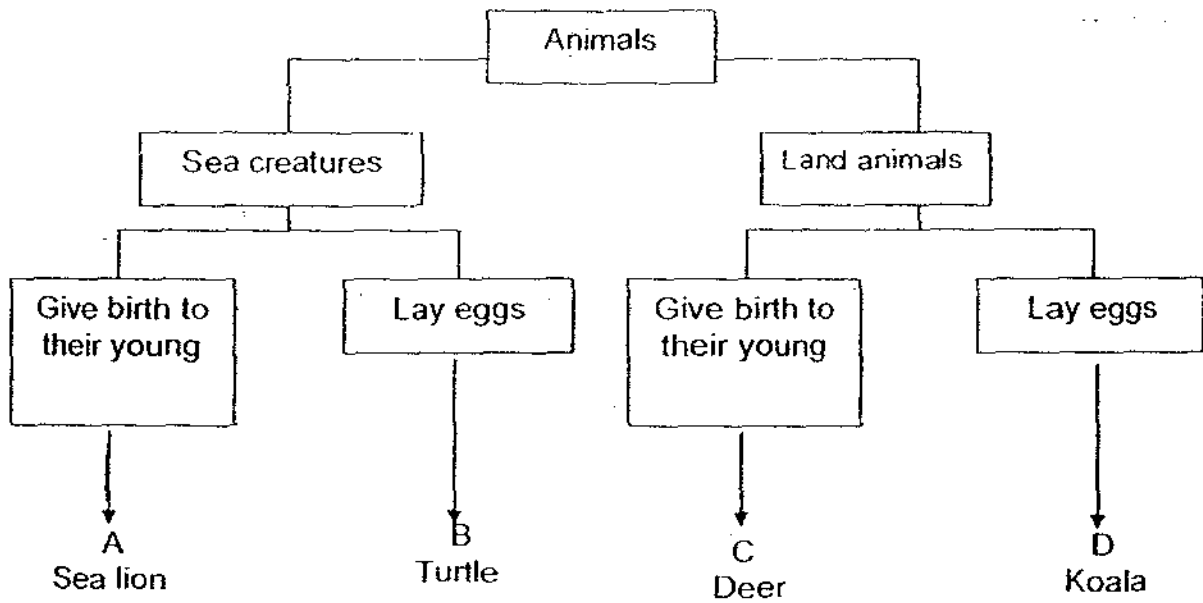
b) What conclusion about plant growth can you draw from your answer in part (a)?(2m)

\_\_\_\_\_

\_\_\_\_\_



41. Look at the classification table below.

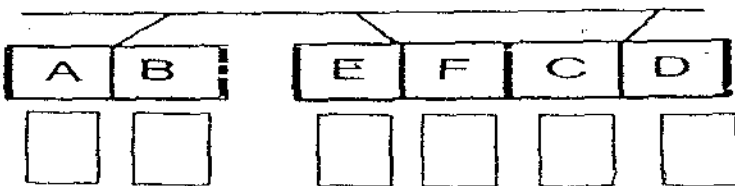


i) Which animal is wrongly classified? (1 m)

ii) Give a reason for your answer above. (1 m)

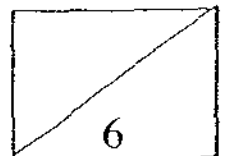
iii) In which group will you classify the duck? (1m)

42. The diagram below shows the observations Shaun made when he hung three bar magnets AB, CD and EF, of similar strength and size next to one another.



i) Write 'N' for north and 'S' for south under each of these magnets in the boxes provided. (2m)

ii) What would take place when Shaun places AB and CD next to each other? (1m)



43. The objects below were collected to find out if they would be attracted to a bar magnet.

Wood	Paper bookmark	Steel spoon
Safety pins	Paper clips	Cardboard

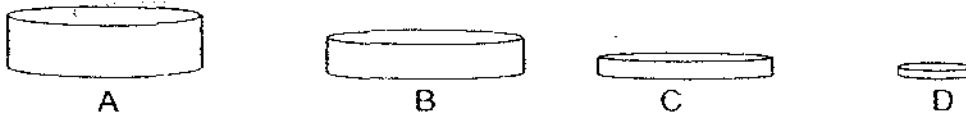
i) Classify the above objects in the table below. (3m)

Attracted by magnet	Not attracted by magnet

ii) After the experiment, the bar magnet was left hanging freely by a thread. In which direction will the magnet come to rest? (1m)

---

44. Xiao Ming had 4 button magnets as shown below. He brought them individually close to a box of pins.



He observed the number of pins attracted by each magnet and tabulated the results in the table below.

Magnet A	Magnet B	Magnet C	Magnet D
25 pins	30 pins	20 pins	40 pins

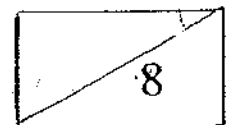
i) Which is the strongest magnet? How do you know? (2m)

---

ii) From the results, what can Xiao Ming infer? (2m)

---

**End of Paper**  
Have you checked your paper?



# ANSWER SHEET

**EXAM PAPER 2009**

**SCHOOL : RED SWASTIKA PRIMARY  
SUBJECT : PRIMARY 4 SCIENCE**

**TERM : CA1**

Q1	Q2	Q3	Q4	Q5	Q6	Q7	Q8	Q9	Q10	Q11	Q12	Q13	Q14	Q15	Q16	Q17
2	2	2	1	3	3	1	3	3	2	3	3	4	2	4	1	1

Q18	Q19	Q20	Q21	Q22	Q23	Q24	Q25	Q26	Q27	Q28	Q29	Q30
3	3	1	1	4	2	3	2	4	3	4	3	2

31)i)Both fruits have seeds.

ii)Mango has only one seed but watermelon has many seeds.

32)i)material B.

ii)It is hard as it can protect the head from the falling object. It is waterproof as it can keep the rain out keep the worker's head dry.

33)i)Group A.

ii)Shark. The shark is a cold-blooded animal while the seahorse and sting ray is also a cold-blooded animal.

34)i)C: Flower E: Roots

ii)Stem

Leaf

35)i)C. ii)shape

36)B, C, A, D

37)i)oxygen ii)carbon dioxide iii)respiration iv)photosynthesis

38)a)A: Gullet B: Small intestine

b)i)Mouth, stomach and small intestine.

ii)Small intestine.

39)i)The plant will die.  
ii)The plant needs leaves to make food.

40)a)C.  
b)Plants grow the most with about 8 hours of sunlight in a day or little of sunlight. Plants can grow well when there is not too much.

41)i)Koala.  
ii)Koala does not lay eggs.  
iii)Group D.

42)i)S N N S N S  
ii)They would repel.

43)i) <u>Attracted by magnet</u>	<u>Not attracted by magnet</u>
Safety pins	Wood
Steel spoon	Paper bookmark
Paper clips	Cardboard
ii)North-south direction.	

44)i)magnet D. Magnet D attracted the most pins.  
ii)The strength of the magnet does not depend on its size.