

Name : _____ ()

Class : Primary 4 _____

CHIJ ST NICHOLAS GIRLS' SCHOOL (PRIMARY)



PRIMARY 4
SECOND SEMESTRAL ASSESSMENT
MATHEMATICS

29 OCTOBER 2010
BOOKLET A

TOTAL TIME BOOKLETS A AND B : 1 h 45 min

Do not open the booklet until you are told to do so.
Follow all instructions carefully.

This booklet consists of 6 printed pages including the cover page.

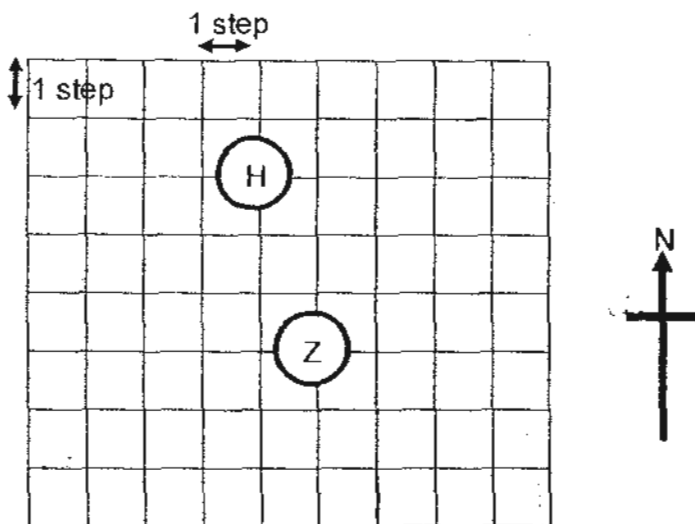
5. The digit 7 in 6.873 stands for 7 _____.

- 1) hundredths
- 2) tenths
- 3) tens
- 4) ones

6. Which of the following figures has perpendicular lines?

- 1) Z
- 2) H
- 3) X
- 4) V

7. Look at the diagram given below and answer the question that follows.



Jonah started at point H. He walked 3 steps to the east and then 2 steps to the south. In order to reach Z, what other steps must he take to get there?

- 1) 3 steps to the south and 1 step to the west
- 2) 3 steps to the south and 1 step to the east
- 3) 1 step to the south and 2 steps to the west
- 4) 1 step to the south and 2 steps to the east

11. Stephen started reading a book at 22 45. If he finished reading the book at 01 15, for how long did he read?

- 1) 1 h 30 min 2) 1 h 45 min
 3) 2 h 30 min 4) 2 h 45 min

12. Vaness went for a party which ended at 12.05 am. The party lasted for 3 h 15 min. At what time did the party start?

- 1) 8.45 am 2) 8.45 pm
 3) 8.50 am 4) 8.50 pm

13. The table below shows the number of 20¢ stickers and 50¢ stickers sold by two girls during the first hour of a fundraising event.

| | 20¢ stickers | | 50¢ stickers | | Total amount (\$) |
|--------|-------------------------|-----------------------|-------------------------|-----------------------|-------------------|
| | Number of stickers sold | Amount collected (\$) | Number of stickers sold | Amount collected (\$) | |
| Janice | 73 | 14.60 | 88 | 44 | 58.60 |
| Karine | 36 | | | | ? |
| Total | 109 | 21.80 | 125 | | |

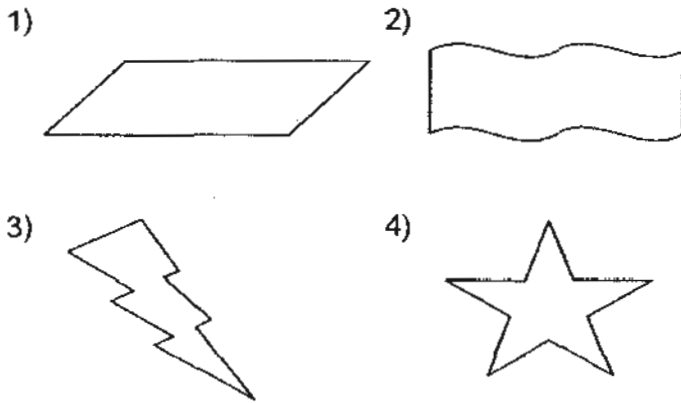
How much money in total did Karine collect from the stickers that she had sold?

- 1) \$7.20 2) \$18.50
 3) \$25.70 4) \$84.30

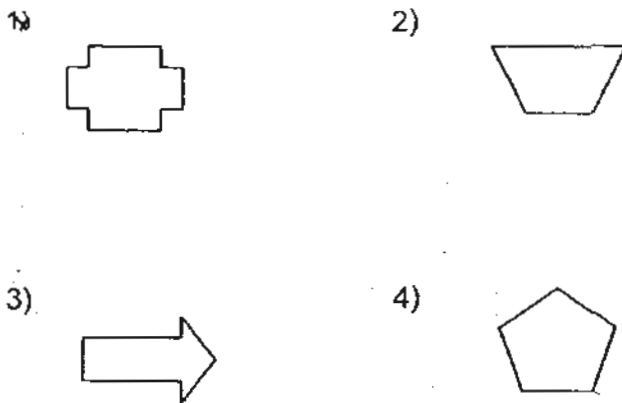
14. Andrew gave $\frac{5}{8}$ of his cards to Rave. Then, he had 285 cards left. How many cards did he have at first?

- 1) 171 2) 475
3) 456 4) 760

15. Which one of the following figures is symmetric?



16. Which one of the following shapes cannot be tessellated?



- END OF BOOKLET A -

Name : _____ ()

Class : Primary 4 _____

CHIJ ST NICHOLAS GIRLS' SCHOOL (PRIMARY)



PRIMARY 4

SECOND SEMESTRAL ASSESSMENT

MATHEMATICS

29 OCTOBER 2010

BOOKLET B

Parent's Signature

| | |
|-----------|------|
| Booklet A | / 32 |
| Booklet B | / 68 |
| Total | 100 |

TOTAL TIME BOOKLETS A AND B : 1 h 45 min

Do not open the booklet until you are told to do so.
Follow all instructions carefully.

This booklet consists of 13 printed pages including the cover page.

SECTION B: (20 x 2 marks)

Write your answers in the blanks provided. Show your workings clearly. Leave your answers in the units stated.

17. Round off 54 629 to the nearest hundred.

Ans : _____

18. $8007 - 3248 =$ _____

Ans : _____

19. $5436 \div 6 =$ _____

Ans : _____

20. Write $\frac{52}{6}$ as a mixed number in its simplest form.

Ans : _____

Do not
write in
this space

Do not write
in this space

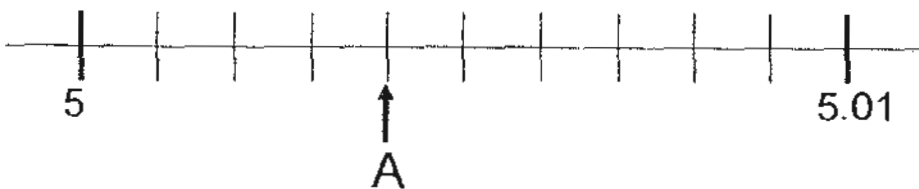
21. Find the value of $1 - \frac{1}{6} - \frac{5}{12}$.

Ans : _____

22. Round off 20.537 to the nearest whole number.

Ans : _____

23. Write the decimal represented by A.



Ans : _____

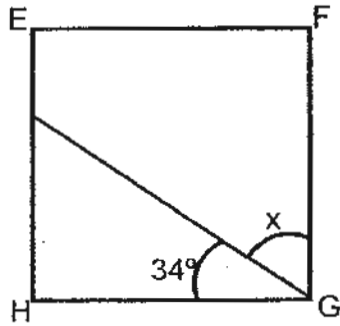
24. Arrange these numbers from the greatest to the smallest.

0.8 , 0.807 , 0.708

Ans : _____

[]

25. EFGH is a square. Find the value of $\angle x$.



Ans : _____°

26. Mrs Tan spent a total of \$4228 on a necklace and a bracelet. The bracelet cost $\frac{2}{7}$ of what she spent in all. How much did Mrs Tan spend on the necklace?

Ans : \$ _____

27. Cheryl spent \$182.90. Darlene spent twice as much as Cheryl. Emma spent \$14.60 more than Darlene. How much money did Emma spend?

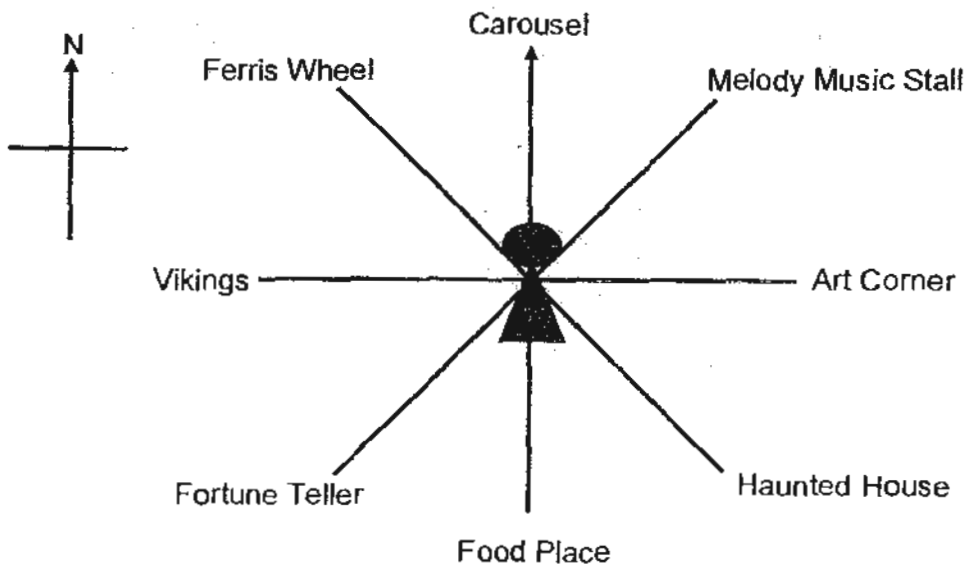
Ans : \$ _____

Do not write
in this space



Do not write
in this space

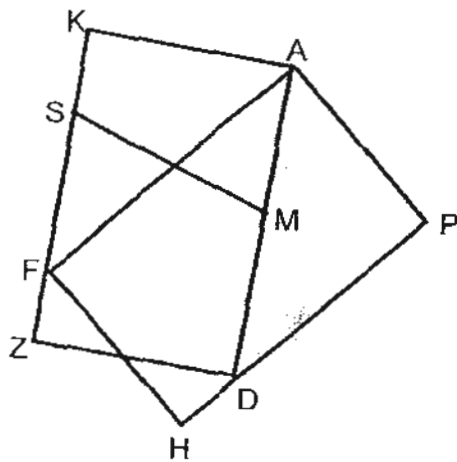
28. Shannon is standing in the middle of a carnival.



Shannon is facing the _____. If she turns through an angle of 135° in the anticlockwise direction, she will face the Ferris Wheel.

Ans : _____

29. Look at the diagram shown below.
How many sets of perpendicular lines are there?



Ans : _____

[]

Do not write
in this space

30. A rectangular piece of paper, measuring 20 m by 9 m, is cut into 4 smaller identical pieces as shown in Figure A. They are then used to form a shape as shown in Figure B. What is the perimeter of the shape in Figure B?

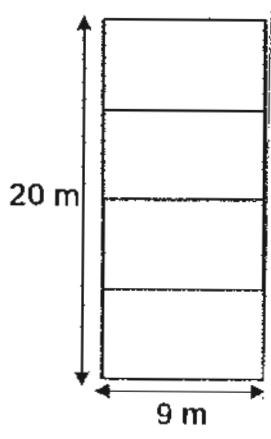


Figure A

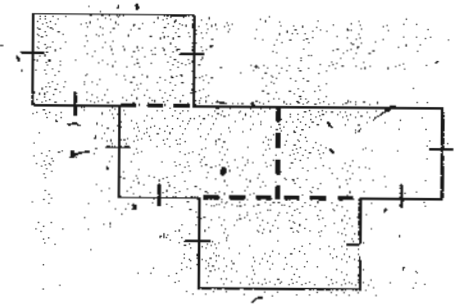
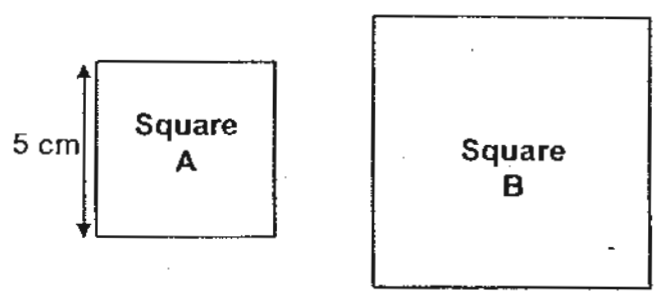


Figure B

Ans : _____ m

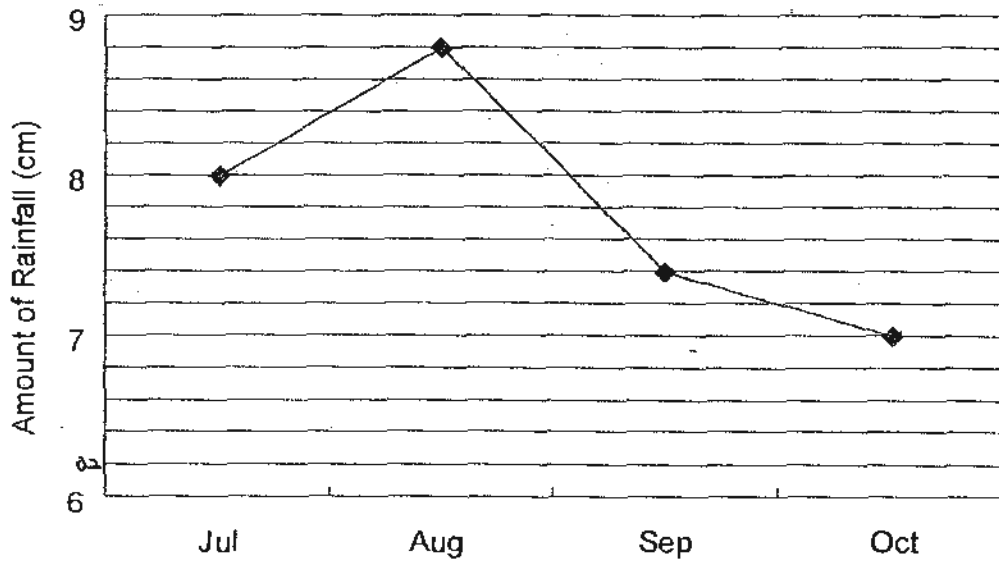
31. Jamie had a piece of wire that is 56 cm long. She cut it into two pieces to form two squares as shown below. What is the area of square B?



Ans : _____ cm²

32. The line graph shows the amount of rainfall from July to October in a certain year.

Do not write
in this space



What was the total rainfall from July to October?

Ans : _____ cm

33. Every day, Samatha jogs 1.4 km while her brother jogs 0.9 km in the stadium. How many days does it take for the two of them to jog 11.5 km altogether?

Ans : _____

Do not write
in this space

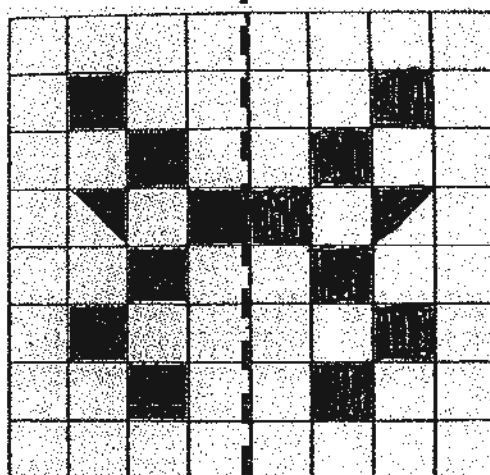
34. Veroy packs 6 kg of peanuts into 7 packets. Every packet contains an equal amount of peanuts. What is the maximum amount of peanuts in each packet? Express your answer as a decimal and round it off to 2 decimal places.

Ans : _____ kg

35. Janessé plans to wear a dress with a jacket and a pair of heels. How many different ways can she dress up if she has a blue dress, a red dress, a white jacket, a green jacket and 3 pairs of heels of different colours?

Ans : _____

36. The dotted line is a line of symmetry. Shade the correct number of squares or half-squares to make a symmetric pattern.



SECTION C: (28 marks)

Solve the following problems. All mathematical working and statements must be shown clearly.

37. Kenny bought 6 bags of rice. Each bag had a mass of 10.84 kg. He distributed all the rice equally among his 4 friends. How much rice did each of his friends receive?

Do not write in this space

Ans : _____ (3m)

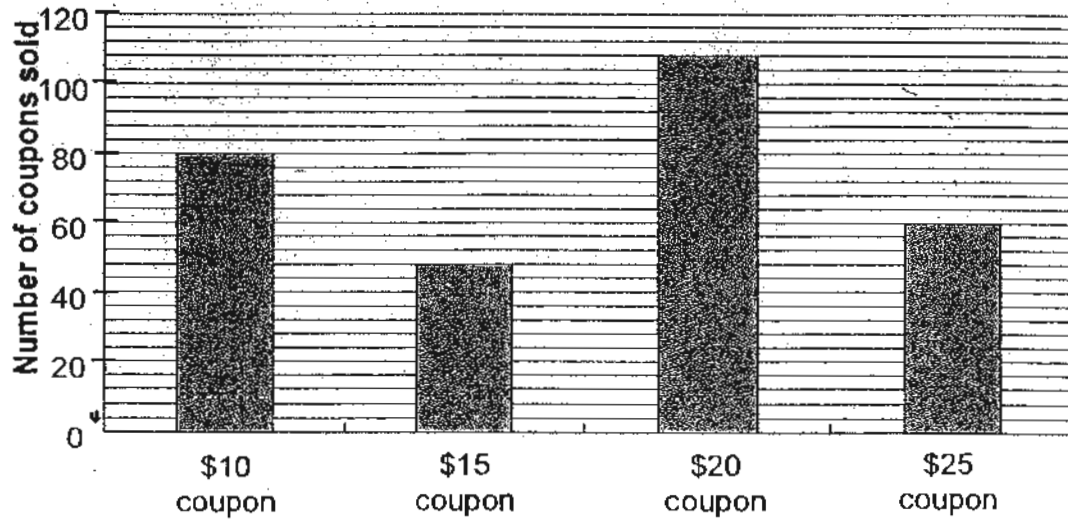
38. Dorothy had 1550 puppets. She sold $\frac{2}{5}$ of her puppets and gave 158 of them to an orphanage. How many puppets did she have left?

Ans : _____ (3m)

[]

39. The bar graph shows the number of fun fair coupons sold by Mr Lim.

Do not
write in
this
space



How much money did he collect from all the coupons sold?

Ans : _____ (3m) []

40. When it is 10 00 in Country A, it is 08 40 in Singapore. Zacchaeus took a flight from Country A at 09 00 to Singapore. The flight lasted 3 h 29 min. What time was it in Singapore when the flight landed? Express your answer using the 24-hour clock.

Do not
write in
this
space

Ans : _____ (3m)

41. Corriene and Hariyantie had 1213 ribbons at first. After Corriene gave 83 of her ribbons to her mother and Hariyantie gave half of her ribbons to her sister, Corriene had thrice as many ribbons as Hariyantie. How many ribbons had Hariyantie at first?

Ans : _____ (4m)

Do not
write in
this
space

42. At a supermarket, Elijah paid \$5.45 for 6 bottles of orange juice. For every 6 bottles of orange juice bought, 2 additional bottles would be given free. Elijah left the supermarket with a total of 72 bottles of orange juice. How much did he have to pay in all? Round off your answer to the nearest dollar.

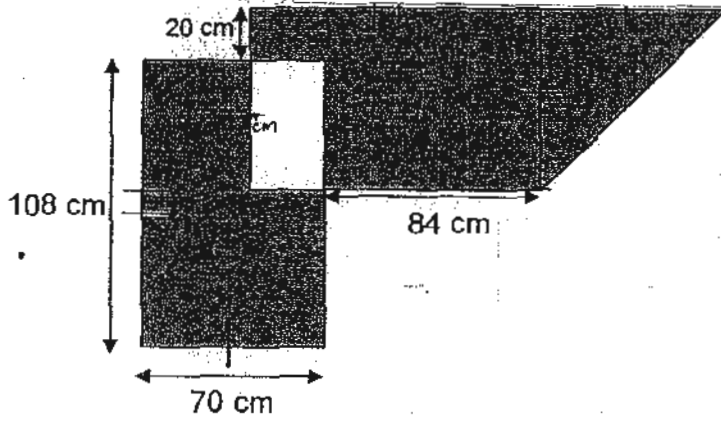
Ans : _____ (4m)

43. Gordon had a box of pens. $\frac{7}{12}$ of them were green, $\frac{1}{6}$ of them were red and the remaining were blue. If there were 1048 more green pens than blue pens, how

Ans : _____ (4m)

44. In the figure below all the lines meet at right angles. Find the total area of the shaded parts of the figure.

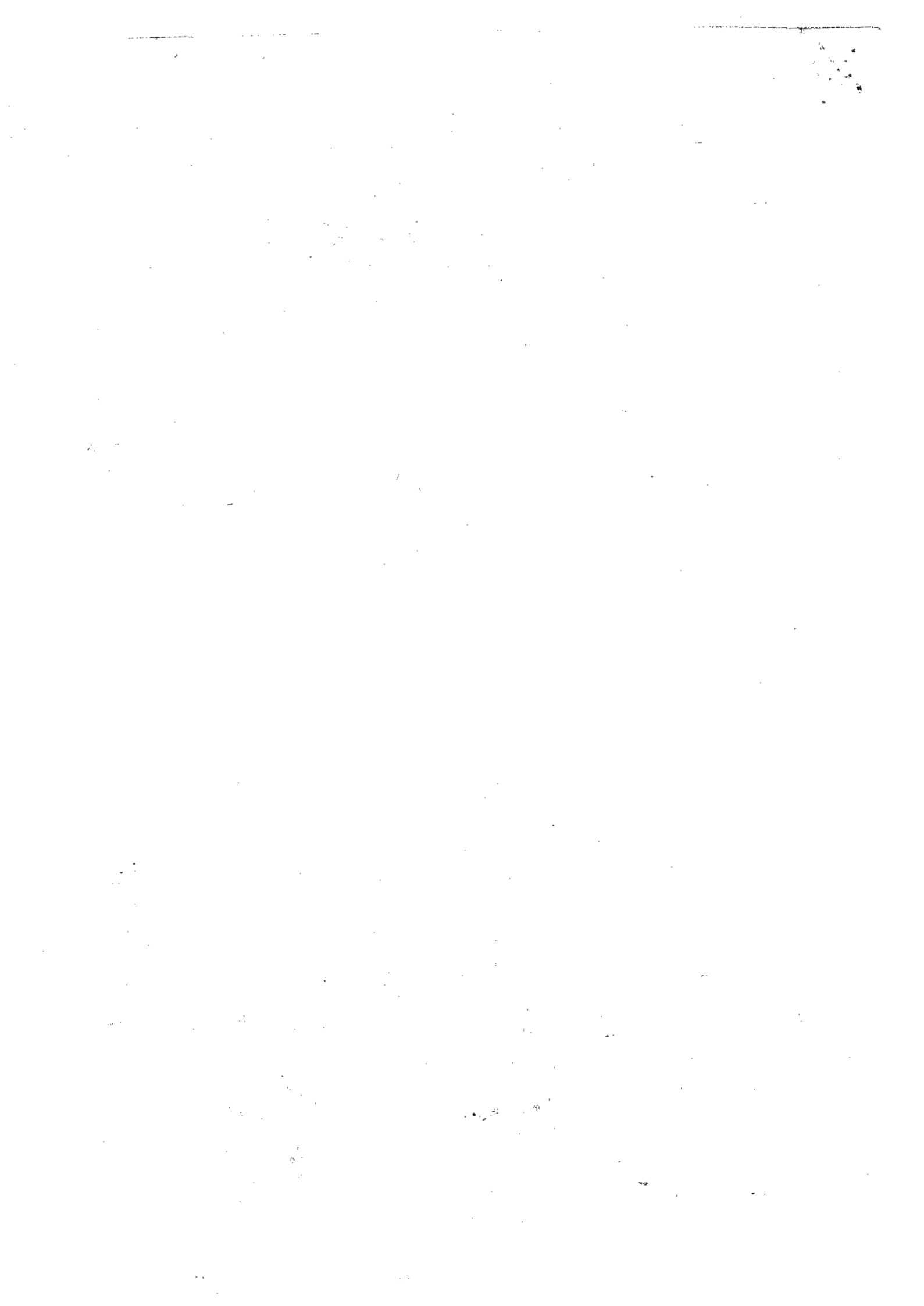
Do not write in this space



Ans : _____ (4m)

[]

****END OF PAPER ****



ANSWER SHEET

EXAM PAPER 2010

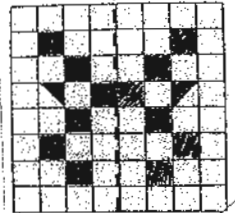
SCHOOL : CHIJ ST NICHOLAS GIRLS' SCHOOL
SUBJECT : PRIMARY 4 MATHEMATICS

TERM : SEMESTRAL ASSESSMENT 2

| | | | | | | | | | | | | | | | |
|----|----|----|----|----|----|----|----|----|-----|-----|-----|-----|-----|-----|-----|
| Q1 | Q2 | Q3 | Q4 | Q5 | Q6 | Q7 | Q8 | Q9 | Q10 | Q11 | Q12 | Q13 | Q14 | Q15 | Q16 |
| 4 | 2 | 4 | 3 | 1 | 2 | 3 | 3 | 1 | 2 | 3 | 4 | 3 | 4 | 4 | 4 |

Section B

- Q17) 5400 Q18) 4759 Q19) 906 Q20) $8\frac{2}{3}$ Q21) $\frac{5}{12}$
 Q22) 21 Q23) 5.004 Q24) 0.807, 0.8, 0.708 Q25) 56°
 Q26) \$3020 Q27) \$380.40 Q28) Art corner Q29) 8 Q30) 77m
 Q31) 81 Q32) 31.2cm Q33) 9days Q34) 0.86kg Q35) 12
 Q36)



| | |
|---|--|
| <p>Q37) 6units $\rightarrow 6 \times 10.84 = 65.04$ 1unit $\rightarrow 65.04 \div 4 = 16.26$ Each of his friends receive 16.26kg of rice.</p> | <p>Q38) 1unit $\rightarrow 1550 \div 5 = 310$ 3units $\rightarrow 310 \times 3 = 930$ Left $\rightarrow 930 - 158 = 772$ She had 772 puppets left.</p> |
| <p>Q39) \$10 $\rightarrow 80 \times \\$10 = \\800 \$15 $\rightarrow 48 \times \\$15 = \\720 \$20 $\rightarrow 108 \times \\$20 = \\$2160$ \$25 $\rightarrow 60 \times \\$25 = \\1500 Total $\rightarrow \\$800 + \\$720 + \\$2160 + \\$1500 = \\$5180$ He collected \$5180 from all the coupons sold.</p> | <p>Q40) ---draw a timeline--- It was 1109 in Singapore when the flight landed.</p> |
| <p>Q41) 5units $\rightarrow 1213 - 83 = 1130$ 1unit $\rightarrow 226$ 2units $\rightarrow 452$ Hariyantie had 452 ribbons at first.</p> | <p>Q42) 6, 12, 18,, 54 1unit $\rightarrow 34 \div 6 = 9$ 9units $\rightarrow 9 \times \\$545 = \\$49.05 \sim \\$49$ He had to pay \$49 in all.</p> |

Q43) 4units→1048

1unit→262

12units→3144

There were 3144 pens in the box.

Q44)

A→ $70\text{cm} \times 70\text{cm} = 4900\text{cm}^2$

$4900\text{cm}^2 \div 2 = 2450\text{cm}^2$

B→ $108\text{cm} - 84\text{cm} = 24\text{cm}$ (Answer1)

$84\text{cm} \times 70\text{cm} = 5880\text{cm}^2$

C→ $20\text{cm} \times 24\text{cm} = 480\text{cm}^2$ (Method1)

D→ $70\text{cm} - 20\text{cm} = 50\text{cm}$ (Answer1)

$70\text{cm} - 24\text{cm} = 46\text{cm}$

$50\text{cm} \times 46\text{cm} = 2300\text{cm}^2$

E→ $108 - 50 = 58$

$58 \times 70 = 4060\text{cm}^2$

Total→ $2450\text{cm}^2 + 5880\text{cm}^2 + 480\text{cm}^2$

$= 8810\text{cm}^2$ (Method1 Answer1)

$8810\text{cm}^2 + 2300\text{cm} + 4060\text{cm}^2$

$= 15170\text{cm}^2$