

ANGLO-CHINESE SCHOOL  
(JUNIOR)



CONTINUAL ASSESSMENT 1 (2010)  
PRIMARY 3

SCIENCE

BOOKLET A

Wednesday

10 March 2010

1 hour

Name : \_\_\_\_\_ ( )

Class : P3 \_\_\_\_\_

**INSTRUCTIONS TO PUPILS**

**DO NOT TURN OVER THE PAGES UNTIL YOU ARE TOLD TO DO SO**

Follow all instructions carefully.

There are 15 questions in this booklet.

Answer **ALL** questions.

**INFORMATION FOR PUPILS**

The total marks for this booklet is 30.

The total time for Booklets A and B is 1 hour.

This question paper consists of 8 printed pages. (Inclusive of cover page)

**Section A (30 marks)**

For each of the question from 1 to 15, four options are given. One of them is the correct answer. Choose the correct option (1, 2, 3 or 4) and shade the correct oval on the Optical Answer Sheet (OAS).

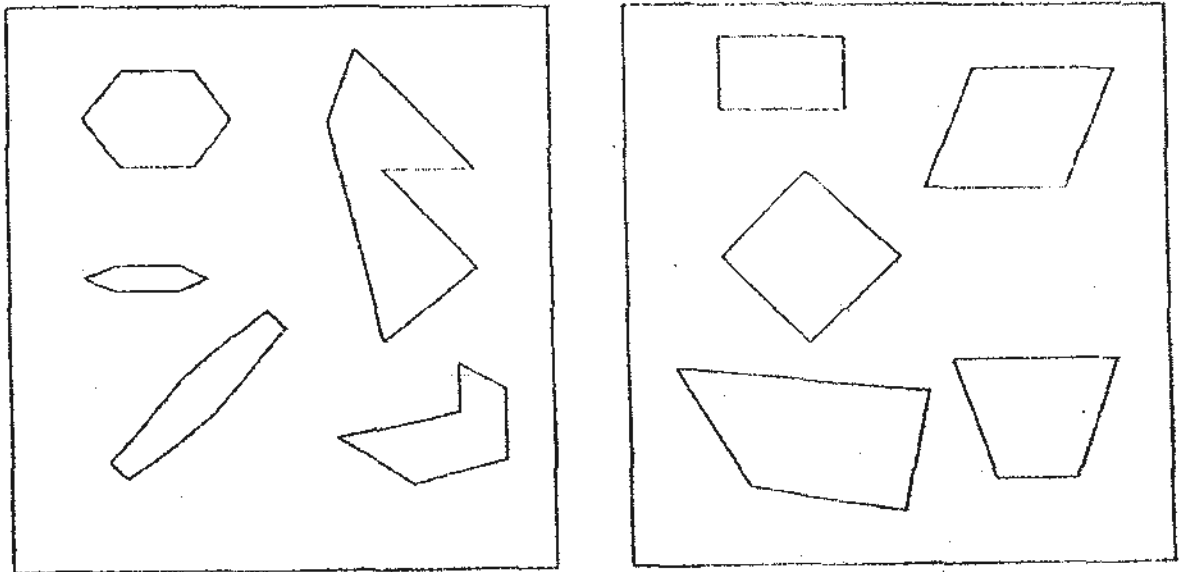
1 The table below shows how some things have been classified.

Group A	Group B
Fish	Rock
Mimosa	Paper
Horse	Rose

Which one of the following has been classified incorrectly?

- (1) Fish
- (2) Rose
- (3) Paper
- (4) Mimosa

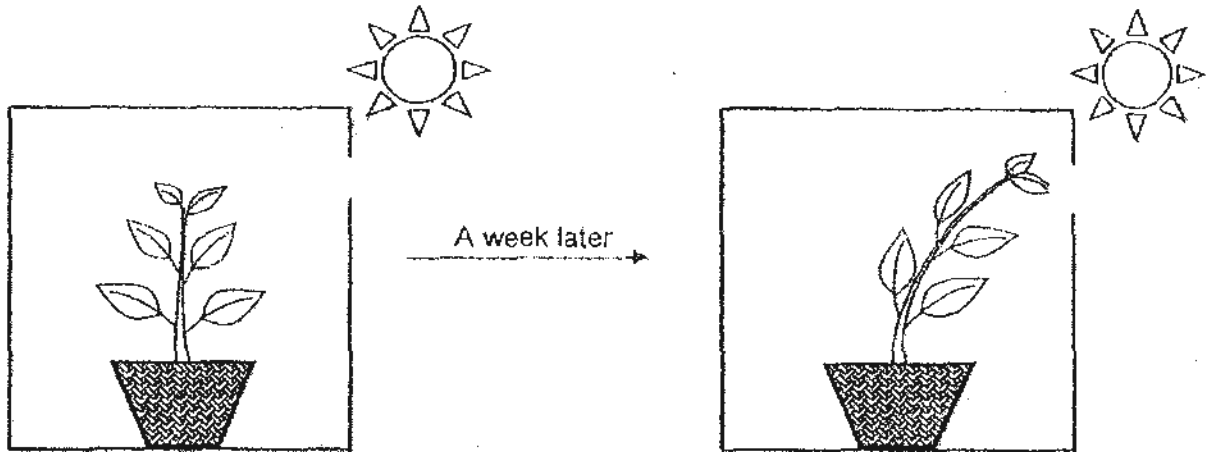
2 Jason classified some objects into two groups as shown below.



The objects in each group are \_\_\_\_\_

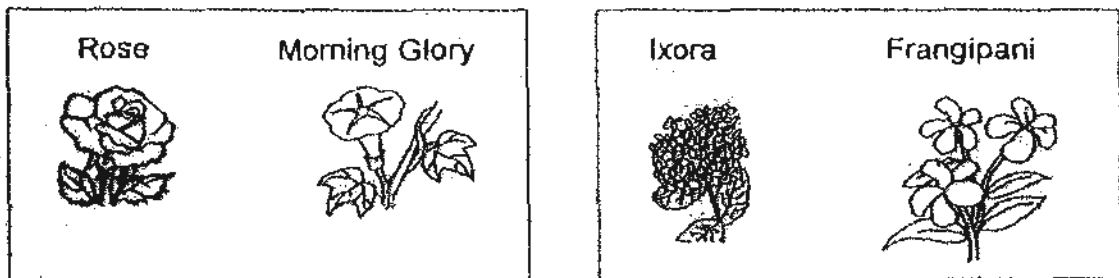
- (1) similar in shape and size
- (2) different in shape and size
- (3) similar in the number of sides
- (4) different in the number of sides

- 3 Mike set up the experiment as shown below. He gave the plant sufficient water to last for a week before leaving the set-up in the garden. The diagrams below show how the plant looked like before and after the experiment.



Which of the following is a correct conclusion based on the results of the experiment?

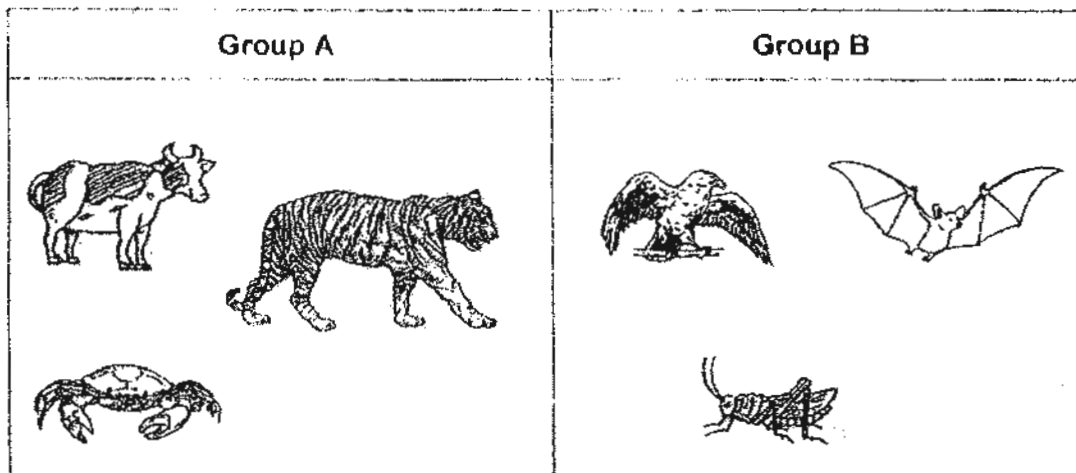
- (1) Plants can reproduce.
  - (2) Plants can respond to changes.
  - (3) Plants need air, food and water.
  - (4) Plants need sunlight to make food.
- 4 Jason classified the flowers into 2 groups as shown below.



The flowers in each group are classified according to \_\_\_\_\_

- (1) colour
- (2) shape
- (3) whether the flowers grow singly
- (4) whether the flowers have single or many petals

5 Ken classified some animals into two groups.



Which of the following headings are suitable for Groups A and B?

	Group A	Group B
(1)	Has 4 legs	Has 2 legs
(2)	Has 2 ears	Has no ears
(3)	Has no wings	Has wings
(4)	Has fur	Has no fur

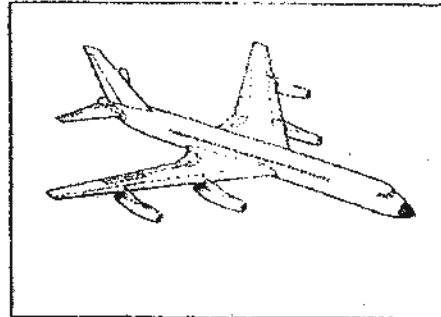
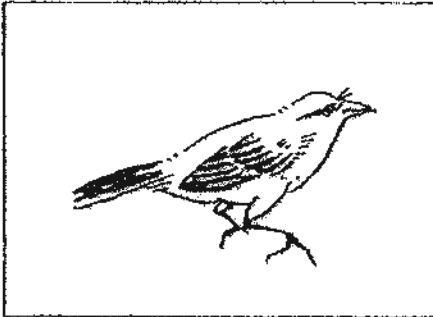
6 Study the characteristics of Things E, F, G and H. A tick (✓) indicates that it has the characteristic.

Things	Characteristics			
	Can move	Needs water	Can reproduce	Has legs
E	✓	✓	✓	✓
F	✓	✓	✓	
G	✓			✓
H	✓	✓		

Which of the following is most likely to be a non-living thing?

- (1) E and F only
- (2) E and H only
- (3) F and G only
- (4) G and H only

7 The diagrams below show a bird and a plane



Which of the following statements is true of both the bird and the plane?

- (1) It can grow.
- (2) It can move.
- (3) It can reproduce and die.
- (4) It needs food, air and water.

8 Jason and Henry played a game. When Jason clapped his hands before Henry, Henry's eyes blinked. Which characteristic of living things was Henry showing?

- (1) Grow
- (2) Reproduce
- (3) Respond to changes
- (4) Need air, water and food

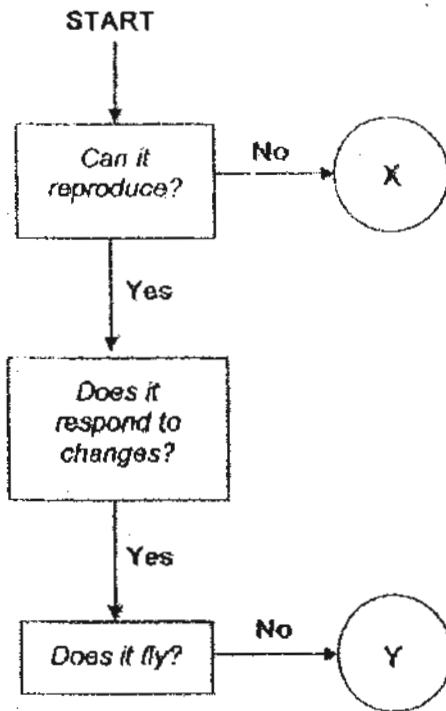
9 Ashraff classified the following objects in a park.

Group X	Group Y
Birds Plants Children Squirrels	Rock Bench Lamp Post A

Which object could A be?

- (1) Fish
- (2) Bush
- (3) Swan
- (4) Statue

10 Study the flowchart



What could X and Y be?

	X	Y
(1)	Rock	Bat
(2)	Rock	Penguin
(3)	Mushroom	Bat
(4)	Mushroom	Penguin

11 The flower of the \_\_\_\_\_ does not give out a pleasant scent.

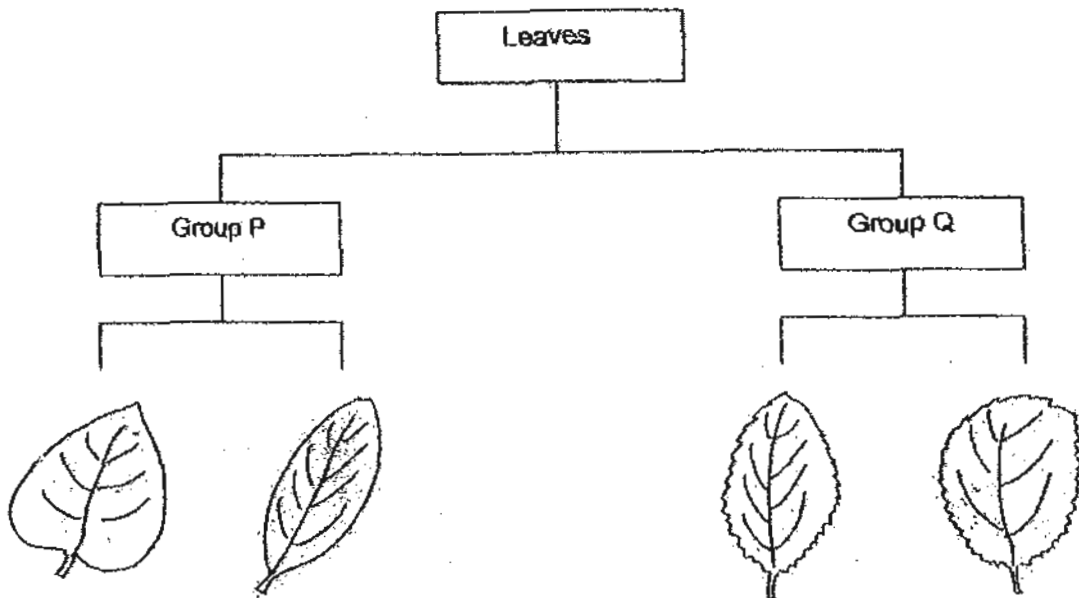
- (1) ixora
- (2) rafflesia
- (3) hibiscus
- (4) frangipani

- 12 Mr Lim bought a plant and left it in the garden by the wall. A few months later, he noticed that the plant has started to grow on his wall.

Based on the above information, Mr Lim has bought a plant \_\_\_\_\_.

- (1) with a weak stem
- (2) with a strong stem
- (3) that needs a wall to make food
- (4) that needs a wall to take in water

- 13 Tim grouped the leaves using the classification table below.



Which one of the following best describes Group Q?

- (1) Oval-shaped
- (2) Heart-shaped
- (3) Smooth-edged
- (4) Jagged-edged

- 14 Alan grouped some plants which he saw during his walk in the Botanic Gardens. Which of the following groups are correct?

	Flowering Plants	Non-Flowering Plants
(1)	Balsam, Moss	Allamanda, Lalang
(2)	Balsam, Lalang	Bird Nest Fern, Allamanda
(3)	Moss, Allamanda	Lalang, Balsam
(4)	LaLang, Allamanda	Moss, Bird Nest Fern

- 15 Charles was given the following clues about Thing Y.

- It is edible
- It feels smooth
- It contains seeds

Which of the following could be Thing Y?

- (1) carrot
- (2) celery
- (3) tomato
- (4) broccoli

ANGLO-CHINESE SCHOOL  
(JUNIOR)



CONTINUAL ASSESSMENT 1 (2010)  
PRIMARY 3

SCIENCE

BOOKLET B

Wednesday

10 March 2010

1 hour

Name : \_\_\_\_\_ ( )

Class : P3 \_\_\_\_\_

INSTRUCTIONS TO PUPILS

DO NOT TURN OVER THE PAGES UNTIL YOU ARE TOLD TO DO SO

Follow all instructions carefully.

There are 7 questions in this booklet.

Answer ALL questions.

FORMATION FOR PUPILS

The number of marks is given in brackets [ ] at the end of each question or part question.

The total marks for this booklet is 20.

The total time for Booklets A and B is 1 hour.

This question paper consists of 7 printed pages. (Inclusive of cover page)

BOOKLET A	/ 30
BOOKLET B	/ 20
TOTAL	/ 50
Parent's signature/Date:	

**Section B (40 marks)**

For questions 16 to 22, write your answers in this booklet. The number of marks available is shown in the brackets [ ] at the end of each question or part question.

- 16 (a) Classify the following things into 2 groups. One of them has been done for you. [2]

Pen	Bed	Sofa	Eraser	Ruler	Stool
-----	-----	------	--------	-------	-------

Group G	Group H
Pen	

- (b) Which group (G or H) would you put the "table"? [1]

---

- 17 John placed two objects in two identical bowls with the same amount of leaves and water. Every day, he weighed the leaves and the result is shown on the table below.

Day	Mass of leaves (g)	
	Bowl R	Bowl S
1	100	100
2	100	96
3	100	90
4	100	85
5	100	70

- (a) The object in Bowl \_\_\_\_\_ is a living thing [1]
- (b) State the characteristic of living things that explains your answer in part (a). [1]

---

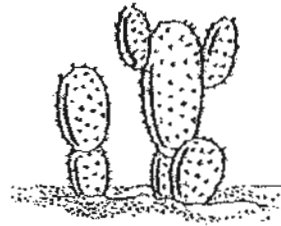


---

18 Compare the two living things below.



Dolphin



Cactus plant

- (a) State whether each of the following statements is 'True' or 'False' by putting a tick (✓) in the correct boxes. [2]

	Statement	True	False
(a)	Both the dolphin and the cactus can respond to changes		
(b)	The dolphin needs water while the cactus does not need water.		
(c)	Dolphin is able to move while the cactus is not able to move.		
(d)	Both the dolphin and cactus are able to reproduce.		

- (b) Besides using the statements in part (a), state one way in which the dolphin and cactus plant are different. [1]

---



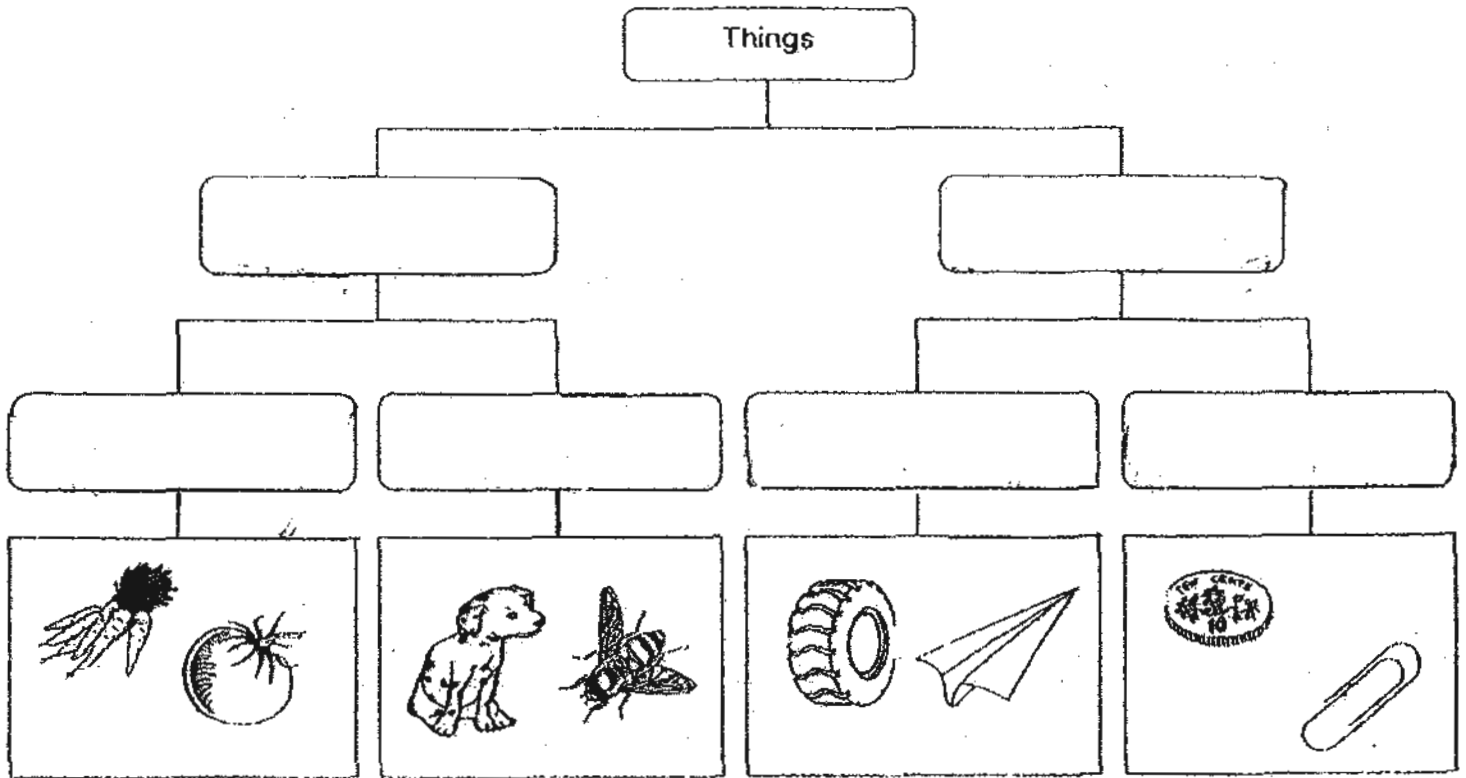
---

19

19 Fill in the boxes in the classification chart with suitable headings given below.

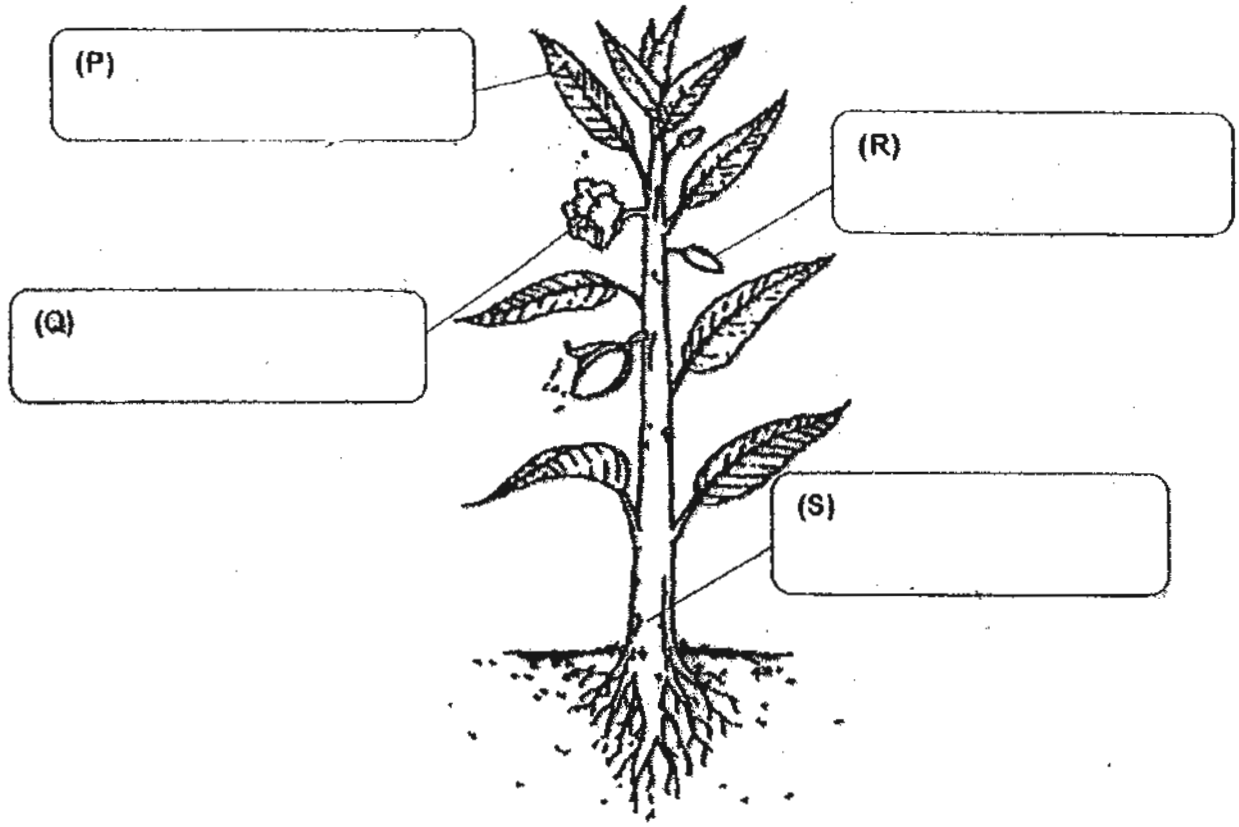
[3]

Made from living things	Made from non-living things	Plants
Animals	Living things	Non-living things



20 Look at the picture of the plant below

(a) Identify the parts labelled P, Q, R and S and write your answers in the boxes provided. [2]



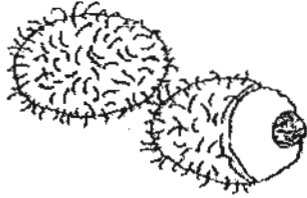
(b) What is the function of part S? [1]

---

---

21 Compare the objects below.

(a)



rambutan



angkana

State a **similarity** between the two fruits.

[1]

---

---

(b)



hibiscus



lily

How are these flowers **alike**?

[1]

---

---

(c)



fern



sunflower

How are these plants **different**?

[1]

---

---

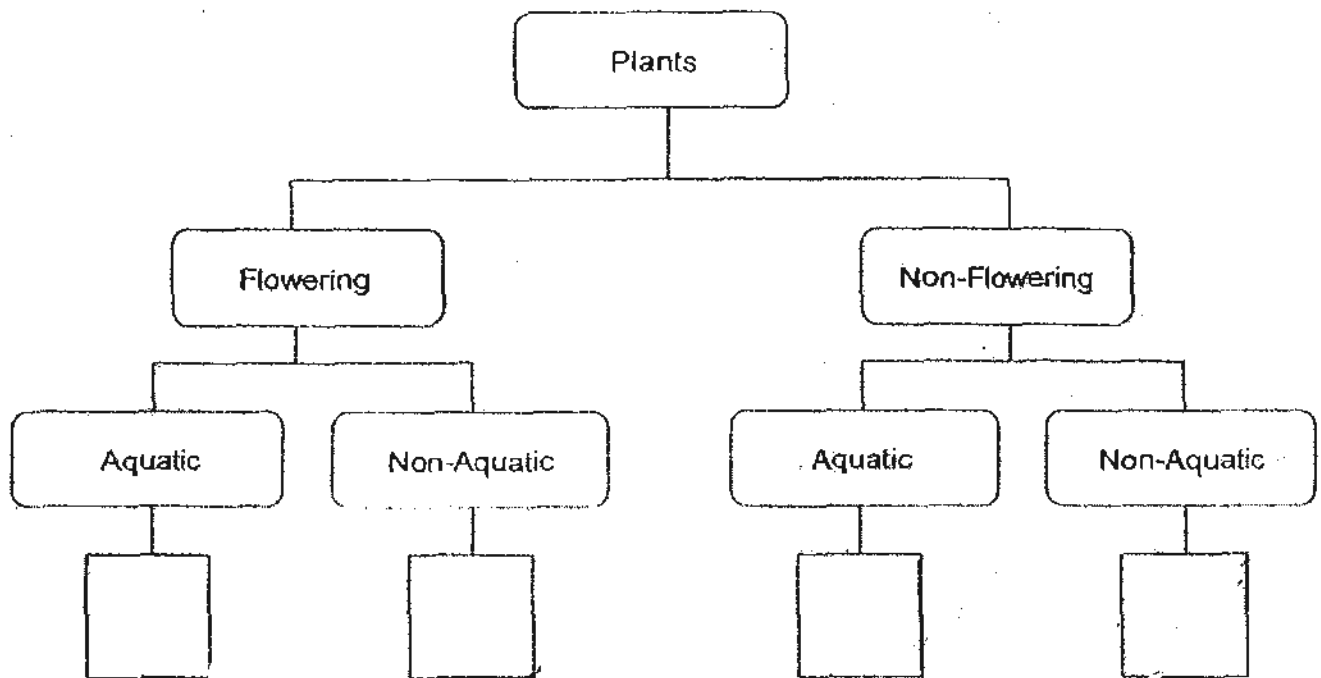
22

The table below shows information on four plants, Q, R, S and T, based on two characteristics.

Plants				
Characteristics	Q	R	S	T
Bear fruits	✓		✓	
Grows in water		✓	✓	

(a) From the information given above, group all the plants in the appropriate boxes.

[2]



(b) The brinjal is likely to be Plant \_\_\_\_\_.

[1]

