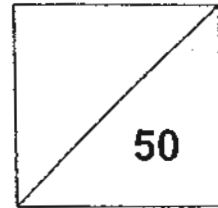


HENRY PARK PRIMARY SCHOOL
2010 SCIENCE COMMON TEST 1
PRIMARY 3



Duration of Paper: 45 mins

Name: _____

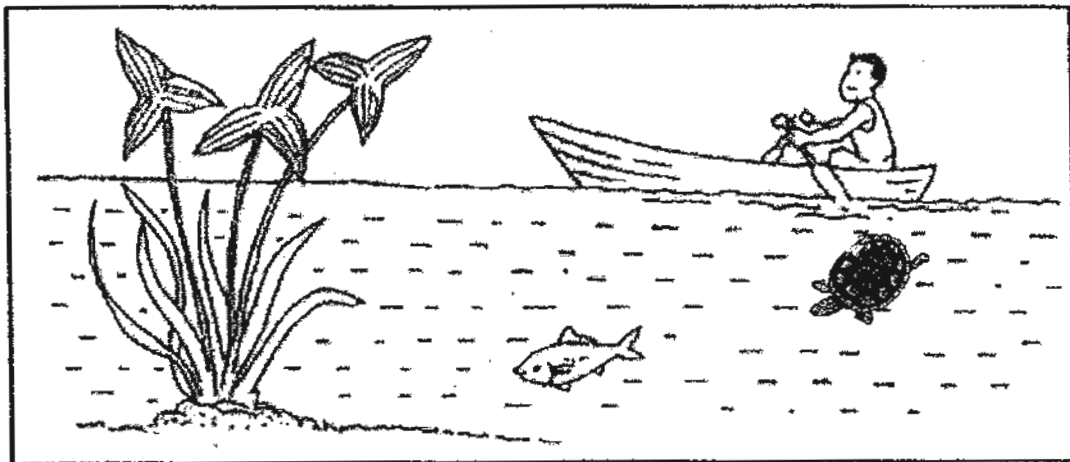
Class: Pr 3 _____

Parent's Signature: _____

PART 1 (30 marks)

For each question from 1 to 9, four options are given. One of them is the correct answer. Make your choice (1, 2, 3 or 4) and write its number in the bracket provided.

1. Look at the picture below.



How many living things can you find in the picture?

- (1) 1
- (2) 2
- (3) 3
- (4) 4

()

2. Which one of the following processes shows that growth has taken place in a living thing?

- (1) A balloon getting bigger in size.
- (2) A cat runs away when a dog chases it.
- (3) A child became taller.
- (4) A cow giving birth to a baby calf.

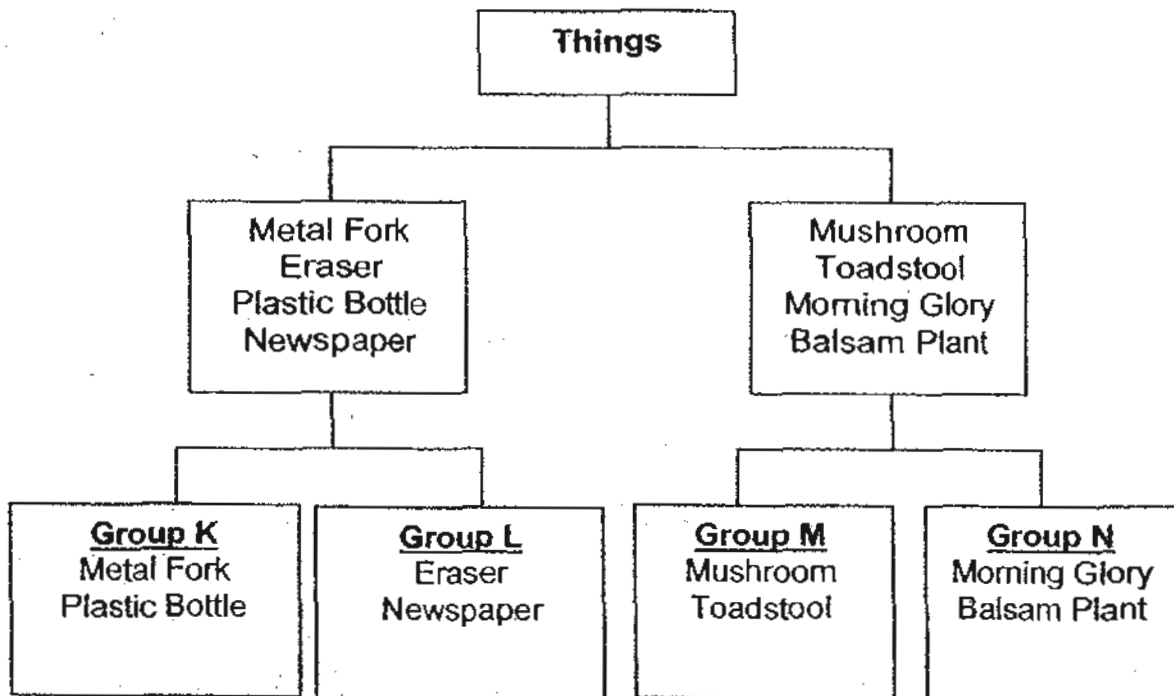
()

3. Which one of the following observations below is correctly matched to its characteristic of living things?

	Observations	Characteristics
(1)	A frog lays eggs.	Living things respond to changes.
(2)	A boy moved his foot away from a sharp object he stepped on.	Living things need air, food and water.
(3)	A monkey swings from tree to tree.	Living things can reproduce.
(4)	A caterpillar changes into a butterfly.	Living things can grow.

()

4. Study the classification table below.

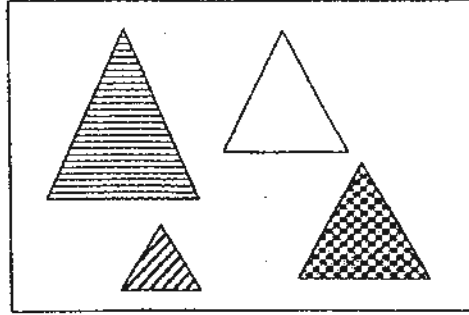
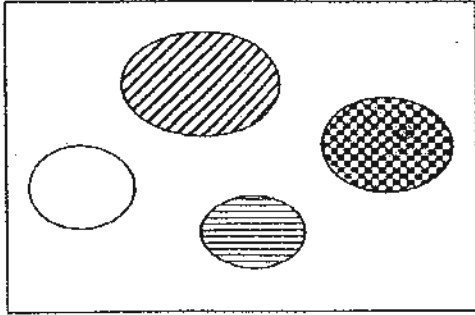


Which one of the headings correctly represent **Groups K, L, M and N**?

	Group K	Group L	Group M	Group N
(1)	Once Alive	Never Alive	Animals	Plants
(2)	Bacteria	Plants	Fungi	Animals
(3)	Never Alive	Once Alive	Fungi	Plants
(4)	Never Alive	Animals	Plants	Once Alive

()

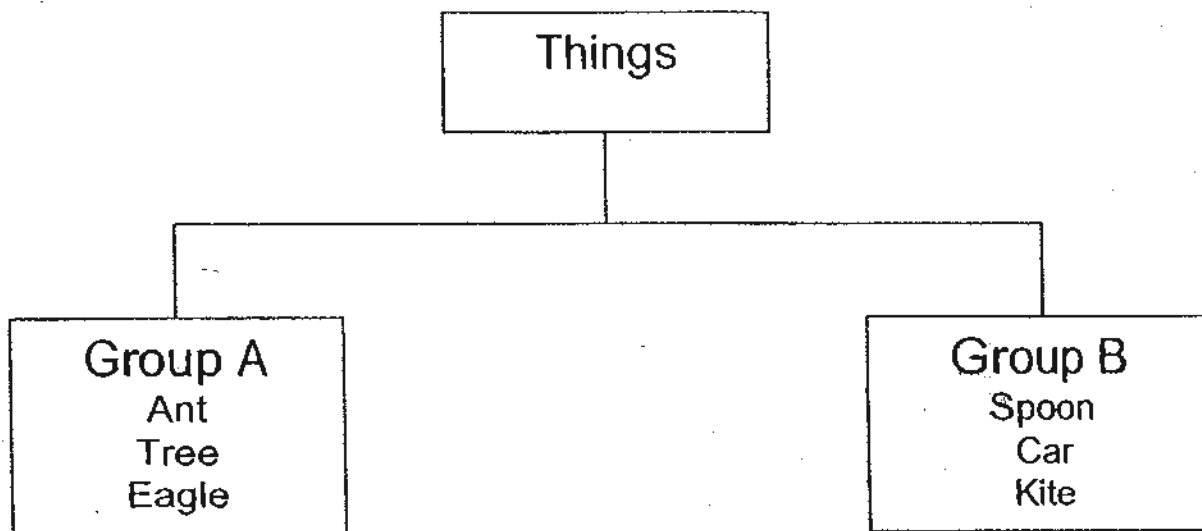
5. The following objects are grouped according to their _____.



- (1) colour
- (2) shape
- (3) size
- (4) texture

()

6. The classification table below shows two different groups of things.



Which one of the following belongs to Group A?

- (1) Fish
- (2) Feather
- (3) Toy bear
- (4) Wooden table

()

7. Alan placed 10 goldfish into a fish tank. The number of goldfish was counted and recorded over a period of 9 weeks in the table below.

Week	Number of Goldfish
1	10
3	12
6	9
9	8

Using the information in the table, which of the following statements are true about the goldfish?

- (A) Goldfish can die.
- (B) Goldfish can reproduce.
- (C) Goldfish can move by themselves.
- (D) Goldfish can respond to changes.

- 1) A and B only
- 2) C and D only
- 3) B and C only
- 4) A and D only

()

8. Which one of the following statements about animals is NOT TRUE?

- (1) All animals reproduce.
- (2) All animals have different body shapes
- (3) All animals move from one place to another.
- (4) All animals depend only on other animals for food.

()

9. Which one of the following outer coverings is matched correctly to the animals?

Animals			
Snail	Fish	Monkey	Chicken
(1) Shell	Hair	Hair	Feathers
(2) Scales	Shell	Hair	Feathers
(3) Shell	Scales	Hair	Feathers
(4) Shell	Scales	Feathers	Hair

()

10. Look at the pictures below carefully.



In what ways are the animals above similar?

- (A) They have wings.
- (B) They have two legs.
- (C) They hatch from eggs.
- (D) They feed on plants only.

- (1) A and C only
- (2) A and D only
- (3) B and C only
- (4) B and D only

()

11. Study the group of living things below.



Bat

Grasshopper

Bear

Tiger

The grasshopper does not belong to the group because _____

- (1) it cannot fly but the rest can fly.
- (2) it lives in water but the rest live on land.
- (3) it cannot move from one place to another but the rest can
- (4) it does not have hair on its body but the rest have

()

12. Study the table below carefully.

	Animals		
	P	Q	R
Is it a bird?	No	Yes	No
Does it live in water?	Yes	No	No
Does it have legs?	No	Yes	Yes

Which of the following shows correctly what Animals P, Q and R could be?

	P	Q	R
(1)	Butterfly	Snake	Guppy
(2)	Monkey	Penguin	Dog
(3)	Prawn	Whale	Snail
(4)	Goldfish	Ostrich	Elephant

()

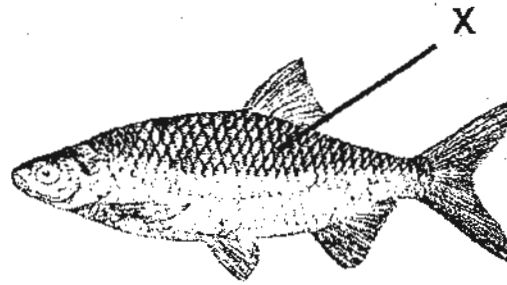
13. Which of the following statements are **TRUE** about mammals?

- (A) All mammals live on land.
- (B) All mammals feed their young with milk.
- (C) All mammals give birth to their young alive.
- (D) All mammals have hair as their outer coverings.

- (1) A and B only
- (2) A and C only
- (3) B and D only
- (4) C and D only

()

14.



The part marked X helps the fish to _____.

- (1) move in water
- (2) float on water
- (3) change direction
- (4) protect its soft body

()

15. Three children, Bob, Carl and David, each stated a characteristic of an insect.

Bob: All insects reproduce by laying eggs.

Carl: All insects have three body parts.

David: All insects have six legs.

Which of the three children has/have stated the characteristic(s) which make an insect different from the other animal groups?

- (1) Bob only
- (2) Carl only
- (3) Carl and David
- (4) Bob and David

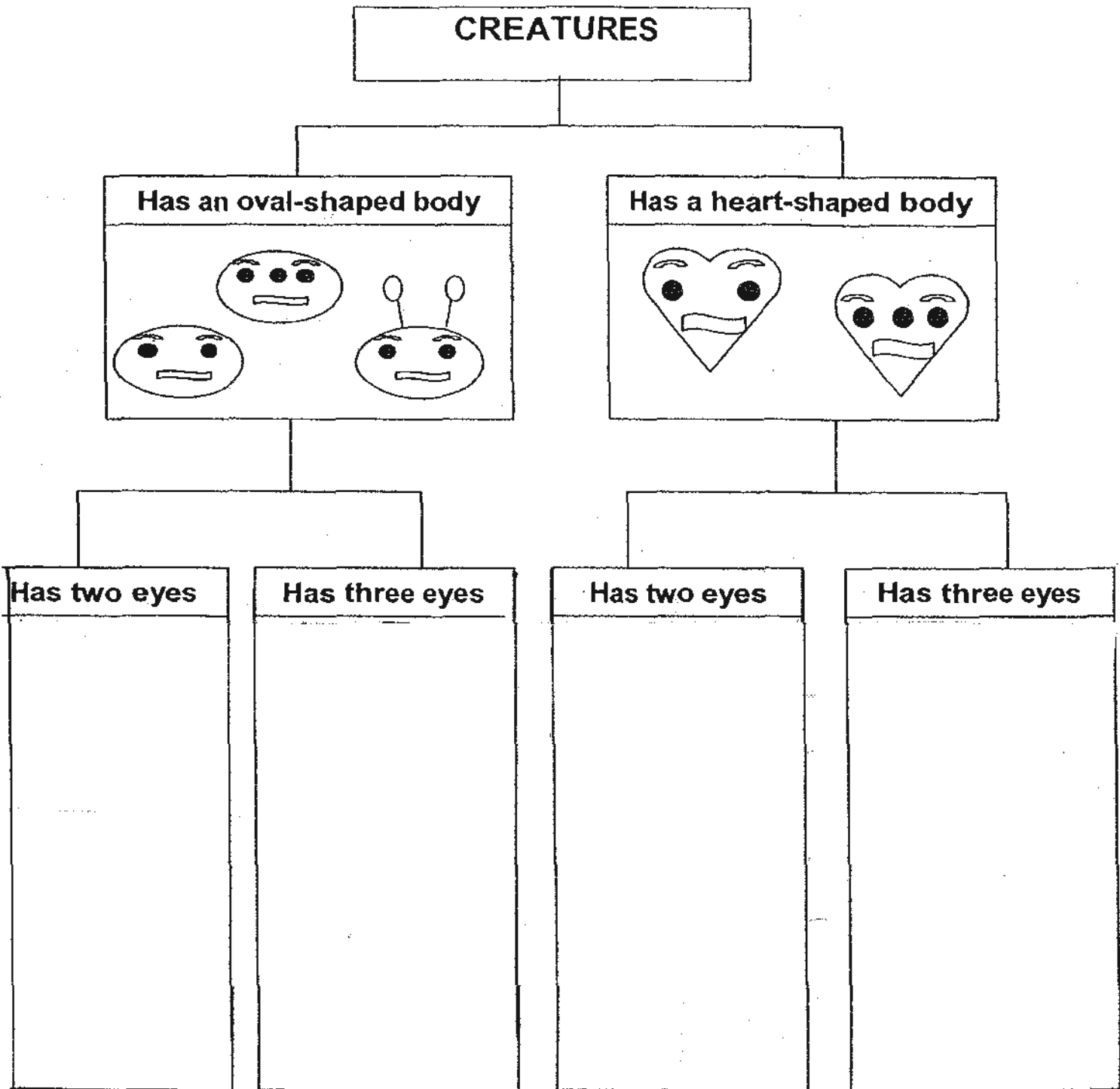
()

PART 2 (12 marks)

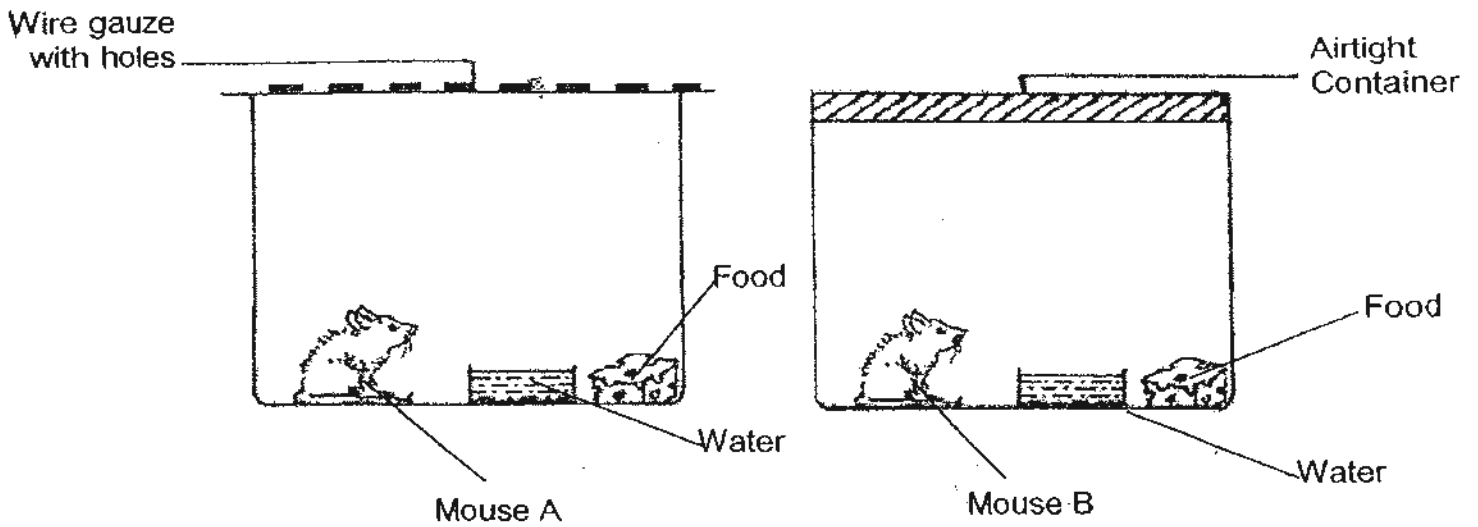
Write your answers to questions 10 to 15 in the spaces given.

16. Scientists have discovered a few new creatures. They need to classify these (4m)
creatures.

Complete the classification table by **drawing** the creatures according to the characteristics that they have.



17. John set up an experiment to find out about the needs of living things. Each mouse was given some water and food and placed in different containers as shown below.



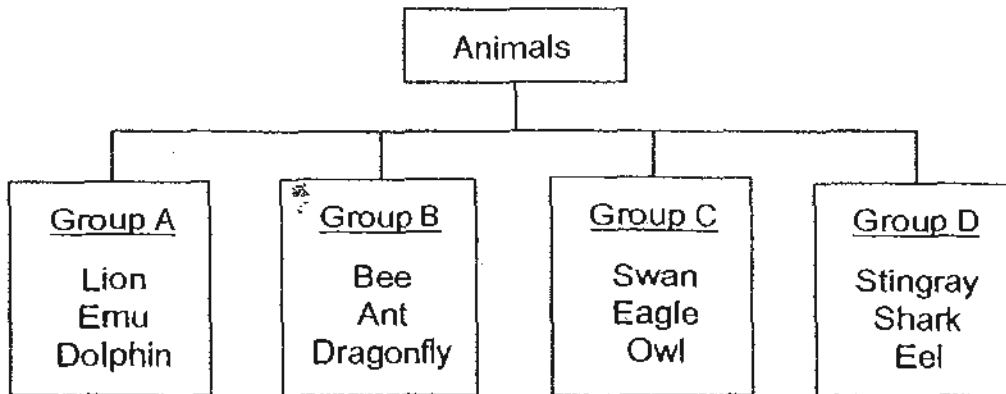
After 4 days, John observed that only one of the mice is alive.

- a) (i) Which mouse, A or B, was most likely still alive? (1m)

- ii) Explain your answer in (i). (1m)

- b) What does (this experiment) show about the needs of living things? (1m)

18. Study the table below.

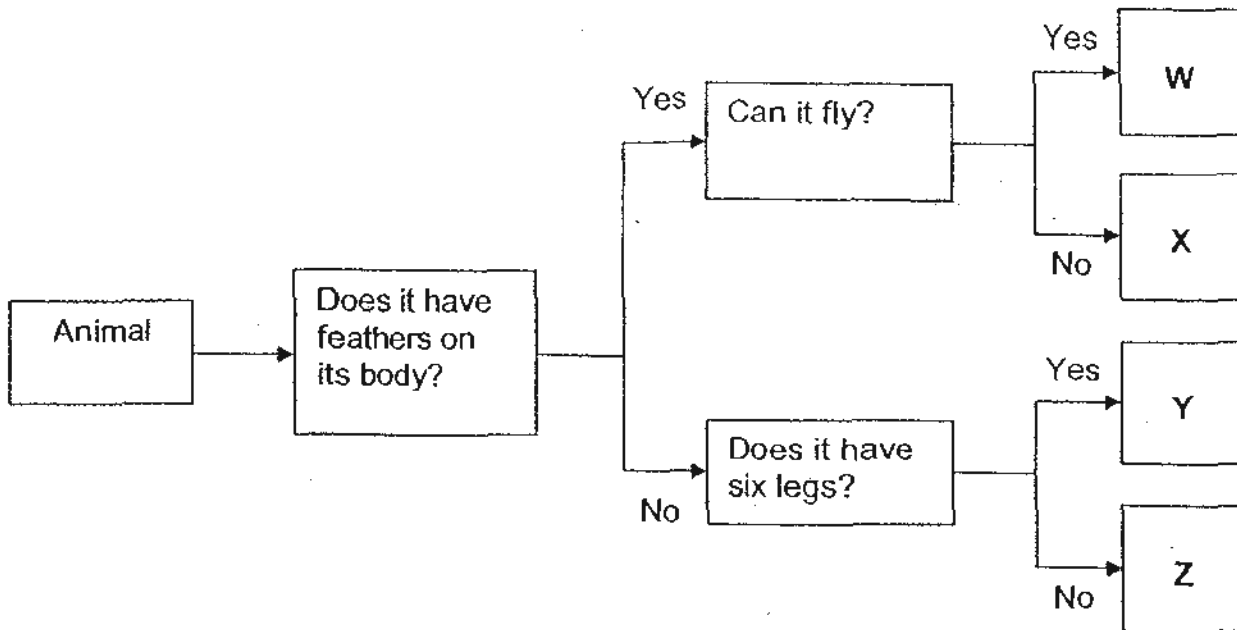


a) Which animal is wrongly grouped? (1m)

The animal is _____

b) State one similarity between the animals in Group B and C. (1m)

19. Study the flowchart below.



(a) Write W, X, Y or Z in the correct boxes given below.

(2m)

(i)	Sunbird	
(ii)	Cockroach	
(iii)	Ostrich	
(iv)	Sealion	

(b) In which group would you put the butterfly in?

(1m)

Group _____

20.

The pictures below show two animals, a whale and a clownfish. Both have characteristics that are similar to and different from each other.



Whale



Clownfish

a) Complete the table below to describe these differences and similarities.

(3m)

	How they move	How they reproduce	Their outer body covering
Whale			
Clownfish			

b) The two animals above belong to two animal groups. Name these two groups.

(1m)

Whale : _____

Clownfish: _____

21. The table below shows the characteristics of two birds, **Bird A** and **Bird B**.

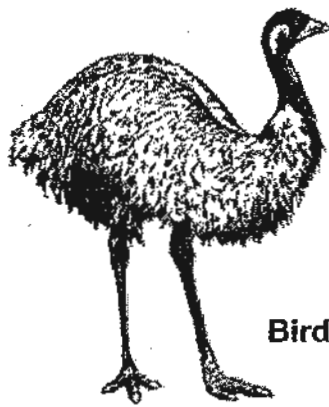
Characteristics	Bird A	Bird B
Wings	Strong	Weak
Legs	Small and short	Big and long
Neck	Short	Long
Body	Is covered mostly with flight feathers	Is covered mostly with down feathers

a) Which bird, **A** or **B**, cannot fly?

(1m)

It is Bird _____

b) Observe **Bird C** below.



Bird C

Put a tick (✓) against the correct statement in the table below.

(1m)

Statement	Tick (✓)
Bird C can fly.	
Bird C cannot fly.	

c) State two reasons for your answer in (b).

(2m)

END OF PAPER

Setters: Mdm Fathlon Tawfik
 Mr Yuan K.K
 Vetter: Miss Tan Y. H

ANSWER SHEET

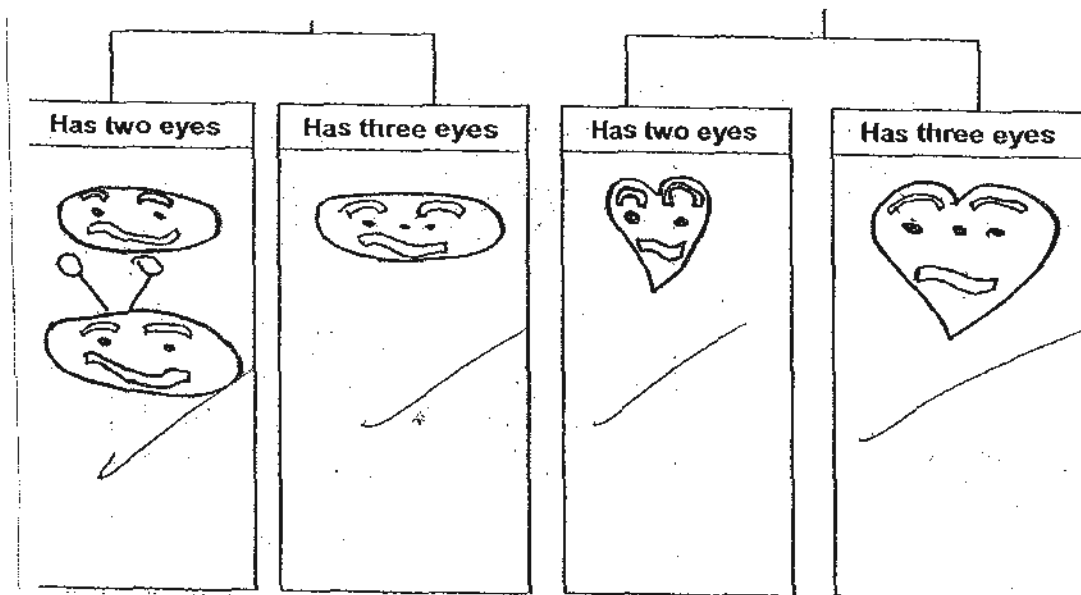
EXAM PAPER 2010

**SCHOOL : HENRY PARK PRIMARY
SUBJECT : PRIMARY 3 SCIENCE**

TERM : CA1

Q1	Q2	Q3	Q4	Q5	Q6	Q7	Q8	Q9	Q10	Q11	Q12	Q13	Q14	Q15
4	3	4	3	2	1	1	4	3	1	4	4	3	4	3

16)



17ai) Mouse A

17aii) Mouse A has a wire gauze with holes providing air for it, but mouse B has an airtight container.

17b) All living things need air to survive.

18a) Emu

18b) They all lay eggs.

19ai) W

19aii) Y

19aiii) X

19aiv) Z

19b) group Y

20a) Whale

How they move: Swim

How they reproduce: Give birth to young alive

Their outer covering: Hair

Clownfish

How they move: swim

How they reproduce: lay eggs

Their outer body covering: scales

20b) whales: mammals

Clownfish: fish

21a) B

21b) Bird C cannot fly: ✓

21c) It has down feathers and weak wings.