

Pei Chun Public School
Continual Assessment – 2010
Science
Primary 3

Name : _____ () Date : 26 August 2010

Class : Pr. 3 ()

Science Teacher : _____ Time : 1h 30 min

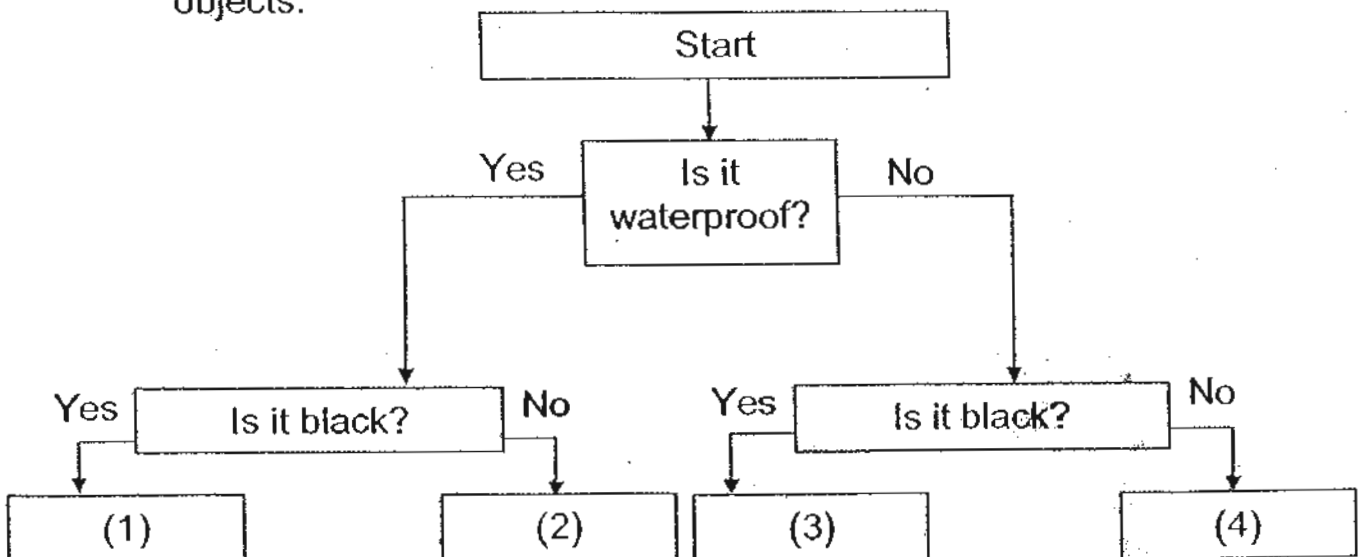
Section A (25 × 2 marks)

For questions 1 to 25, choose the most suitable answer and shade its number (1, 2, 3 or 4) on the Optical Answer Sheet (OAS) provided.

1. Ann observed four objects found in her kitchen. Her observations are shown in the table below.

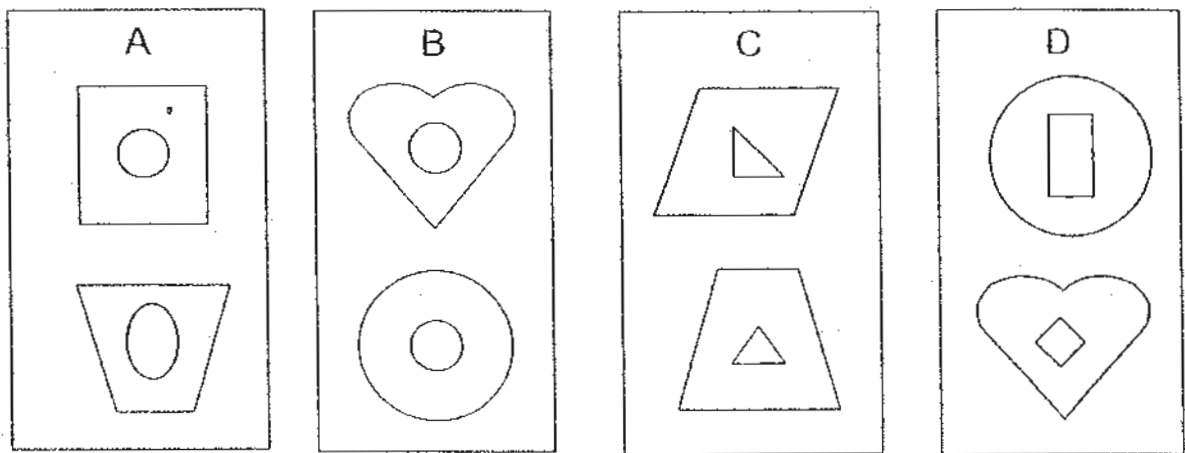
Object	Colour	Is it waterproof?
A	black	Yes
B	black	No
C	pink	Yes
D	yellow	No

Ann drew a flow chart below to show what she had observed of the objects.

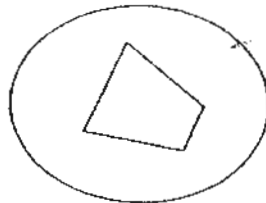


Based on the information provided, where can Object D be placed?
 ()

2. The objects shown below have been classified into four groups, A, B, C and D.



A new object shown below is classified into one of the groups above.



In which group does this new object belong to?

- (1) A
- (2) B
- (3) C
- (4) D

()

3. Felix wrote down a few observations that he had made on some living things.

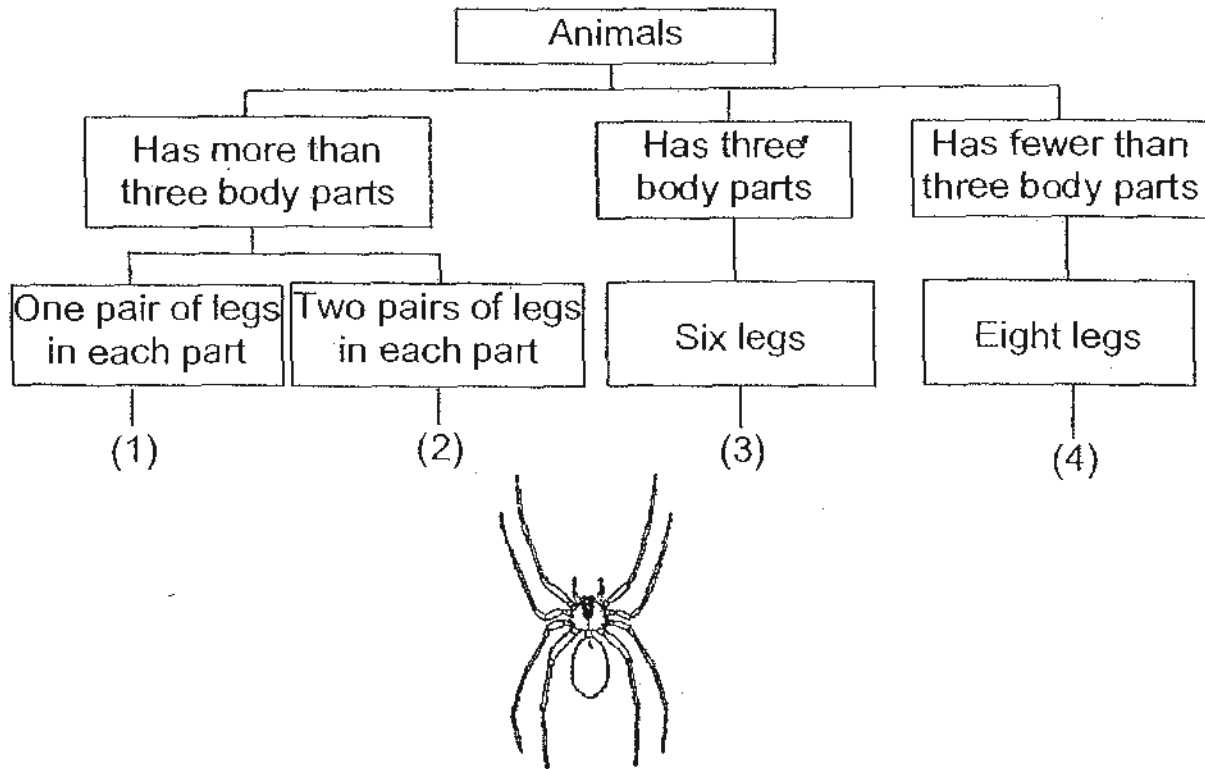
- A millipede curls up tightly when touched.
- Mimosa plants close their leaves when touched.
- A girl screamed when a cockroach climbed onto her foot.

His observations show that living things _____.

- (1) fear other living things
- (2) need air, food and water to live
- (3) respond to changes around them
- (4) can move from place to place on their own

()

4. Study the classification chart below.



Which group, 1, 2, 3 or 4, does the animal shown above belong to? ()

5. Three organisms are shown below.



These organisms can be grouped together because _____.

- A: they can die
- B: they can grow
- C: they can make their own food
- D: they can move from place to place on their own

- (1) A and B
- (2) B and D
- (3) A, B and D
- (4) A, B, C and D ()

6. The diagram below shows a living thing.



The living thing above _____.

- A: has a strong stem
- B: is a flowering plant
- C: can make its own food
- D: needs a support to grow upright

- (1) A and C only
- (2) A, B and C only
- (3) B, C and D only
- (4) A, B, C and D

()

7. Samuel conducted an experiment to find out the conditions necessary for bread mould to grow well.

The table below shows the conditions under which four different bread samples, P, Q, R and S, were kept.

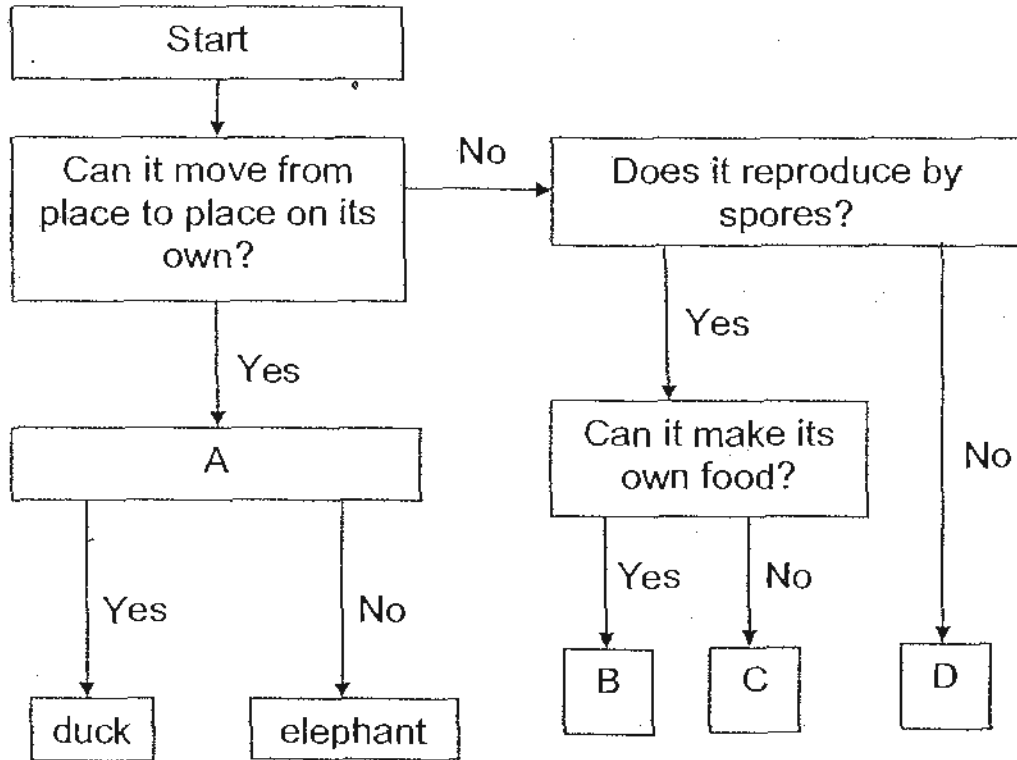
Condition	Sample P	Sample Q	Sample R	Sample S
dry	✓		✓	
moist		✓		✓
bright		✓	✓	
dark	✓			✓

In which bread sample would Samuel find the most mould?

- (1) P
- (2) Q
- (3) R
- (4) S

()

8. The flow chart below can be used to identify some types of living things.



What do A, B, C and D in the flow chart represent?

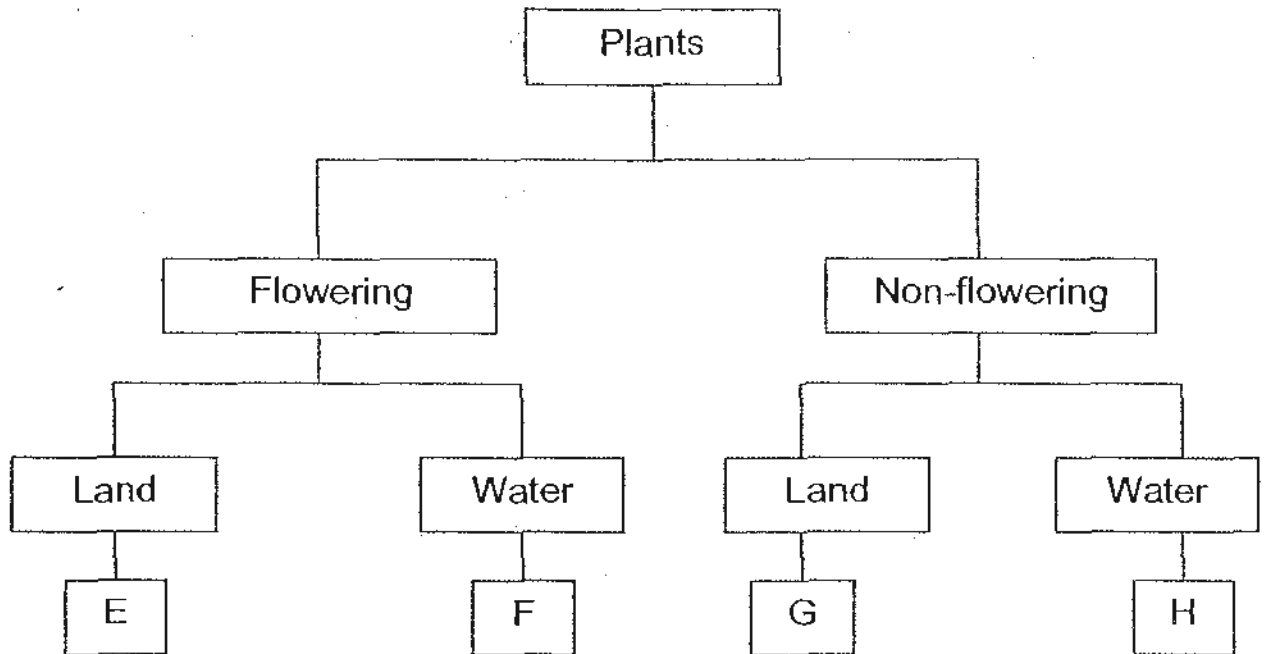
	A	B	C	D
(1)	Does it lay eggs?	bird's nest fern	moss	yeast
(2)	Does it give birth to its young?	yeast	toadstool	mimosa
(3)	Does it lay eggs?	bird's nest fern	bracket fungus	mimosa
(4)	Does it suckle its young?	toadstool	bracket fungus	moss

()

9. Rahim drew up a table with information on two plants, R and S. A tick shows that the plant has the characteristic.

Characteristic	Plant R	Plant S
Have flowers	✓	
Grows on land		✓

Rahim drew a chart to classify plants, R and S.

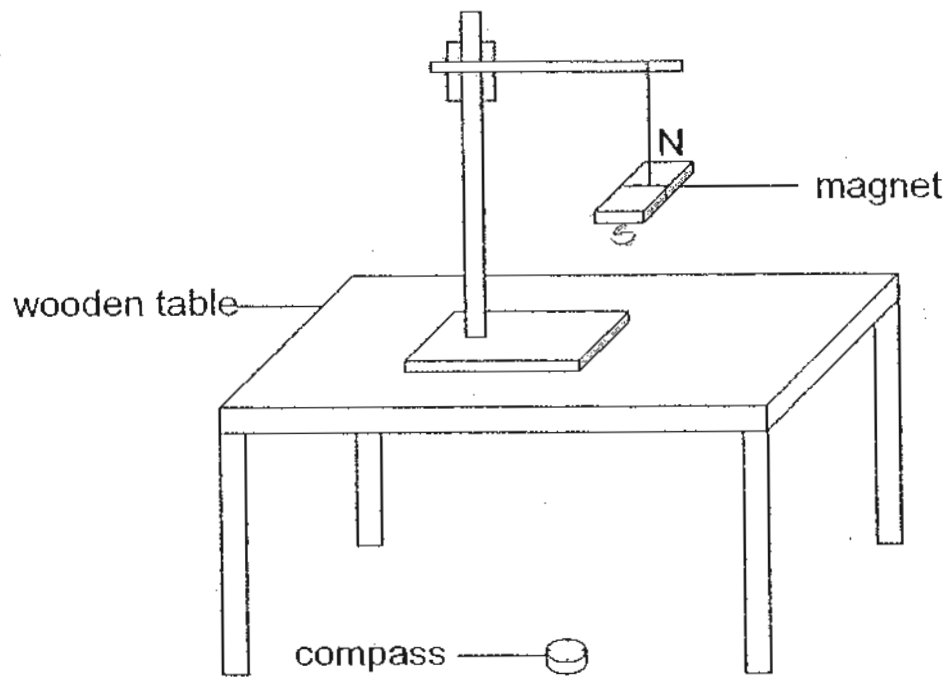


From the chart, which of the letters, E, F, G and H represent plants, R and S?

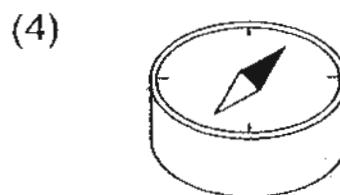
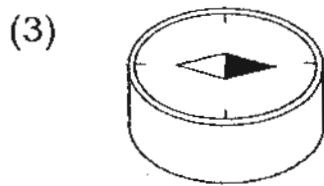
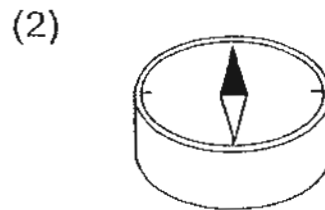
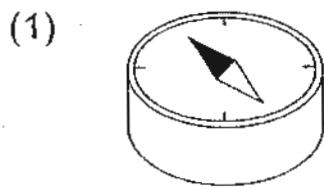
	Plant R	Plant S
(1)	E	H
(2)	F	G
(3)	G	E
(4)	H	F

()

10. Wee Shan hangs a magnet freely and places a compass on the floor.



Which of the following shows the correct position of the needle of the compass?



()

11. The diagrams below show two insects, X and Y.



X



Y

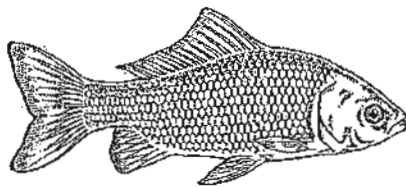
Which of the following statements correctly describe both insects?

- A : X has wings but not Y.
- B : Both have more than three body parts.
- C : Both X and Y have feelers.
- D : X has six legs while Y has eight legs.

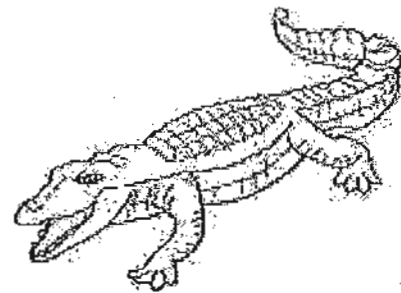
- (1) A and C only
- (2) B and C only
- (3) A, B and C only
- (4) A, C and D only

()

12. The diagrams below show two organisms.



Organism A








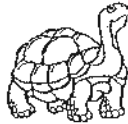
Organism B

Based on what you can observe in the diagrams, which of the following is definitely true?

- (1) Both organisms feed on animals.
- (2) Both organisms have a tail each.
- (3) Both organisms reproduce by laying eggs.
- (4) Organism B lives on land, but Organism A lives in water.

()

13. A pupil collected pictures of six organisms. He grouped them as shown below.

M	
N	P
ostrich 	pig 
bat 	platypus 
eagle 	tortoise 

Which of the following shows what M, N and P are?

	M	N	P
(1)	Living things	Can fly	Cannot fly
(2)	Animals	Has two legs	Has four legs
(3)	Living things	Not mammals	Mammals
(4)	Organisms	Birds	Not birds

()

14. A, B, C and D are four different living things. Study their characteristics carefully.

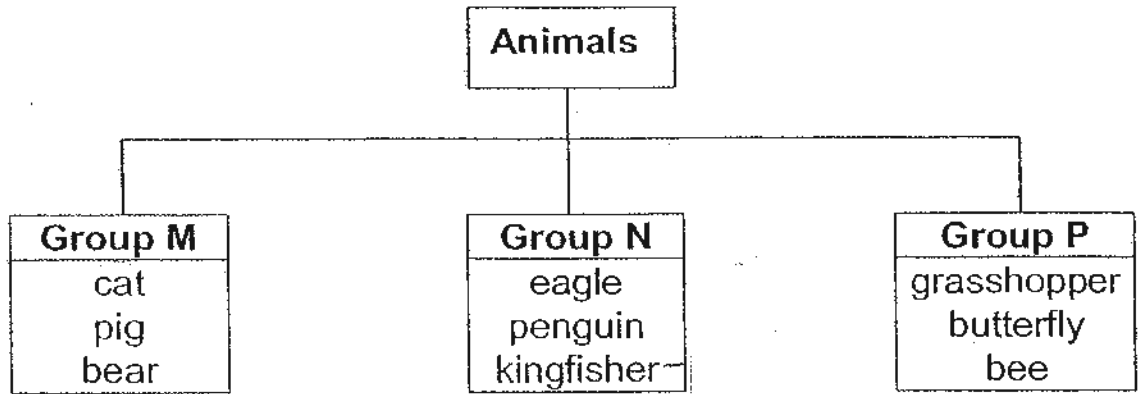
	Can move from one place to another	Needs air to stay alive	Reproduces by spores	Feeds on both animals and plants (dead or alive)
A	✓	✓		✓
B		✓	✓	
C		✓	✓	✓
D	✓	✓		

Which of them is most likely to be a mushroom?

- (1) A
(2) B
(3) C
(4) D

()

15. Study the classification chart below.



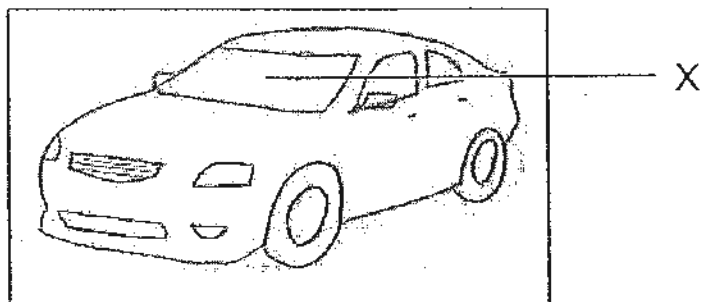
	Group M	Group N	Group P
A:	mammals	birds	insects
B:	four legs	two legs	six legs
C:	animals that walk	animals that fly	animals that crawl

Which of the following sets of headings for groups M, N and P is/ are correct?

- (1) A only
- (2) B only
- (3) A and B only
- (4) B and C only

()

16. The diagram shows a car with a part marked X.



Which of the following materials is most suitable for making Part X?

	Material	Transparent	Waterproof	Flexible
(1)	A	No	No	Yes
(2)	B	Yes	Yes	Yes
(3)	C	No	Yes	Yes
(4)	D	Yes	Yes	No

()

17. Michael and Angelo were given five organisms to classify into two groups. They grouped the organisms differently.

Michael's classification

heliconia ixora	bread mould bird's nest fern bracket fungus
--------------------	---

Angelo's classification

heliconia ixora bird's nest fern	bread mould bracket fungus
--	-------------------------------

How did the two of them group the organisms?

	Michael	Angelo
(1)	whether they reproduce by spores	whether they can make their own food
(2)	whether they respond to changes around them	whether they can make their own food
(3)	whether they reproduce by spores	whether they are flowering or non-flowering plants
(4)	whether they can make their own food	whether they reproduce by spores

()

18. Four materials, A, B, C and D, have different properties as shown in the table.

Properties \ Materials	Materials			
	A	B	C	D
Is it flexible?	Yes	Yes	No	Yes
Is it waterproof?	Yes	Yes	Yes	No
Can break easily?	No	No	Yes	No
Can be stretched?	No	Yes	No	Yes

Which objects are best matched with the materials they are likely to be made of?

	A	B	C	D
(1)	plate	sweater	raincoat	rubber band
(2)	sweater	raincoat	sweater	plate
(3)	raincoat	rubber band	plate	sweater
(4)	rubber band	plate	sweater	raincoat

()

19. Albert compared the hardness of four rocks, W, X, Y and Z, by scratching them 10 times with different rods. He used the same strength for each scratch. He recorded his observations in the table below, using a tick (✓) to indicate the presence of scratch marks on the rocks.

Rock	Presence of scratch marks made by		
	iron rod	wooden rod	plastic rod
W			
X	✓	✓	✓
Y	✓		
Z	✓	✓	

Which of the rocks is the least hard?

- (1) W
 (2) X
 (3) Y
 (4) Z

()

20. Dorai dropped his keychain into a drain. To get it out, he made use of a magnet. Why was this possible?

- (1) His magnet was very big.
- (2) His keychain was made of steel.
- (3) His keychain was made of copper.
- (4) His magnet has north and south poles. ()

21. The diagrams below show four magnets, W, X, Y and Z. The ends of the magnets are labelled A to H. A attracts D but repels F. G repels B.



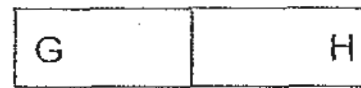
Magnet W



Magnet Y



Magnet X



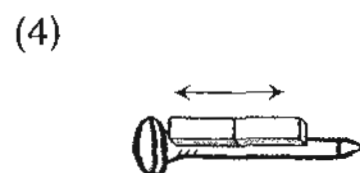
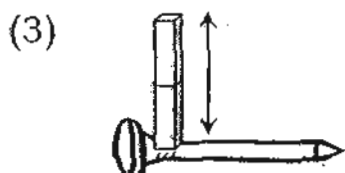
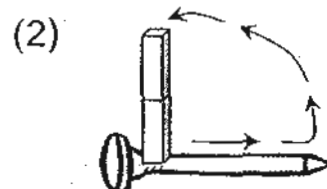
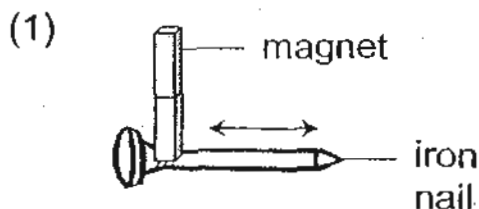
Magnet Z

Which of the following is correct?

	Attracts	Repels
(1)	A and E	A and F
(2)	B and F	A and G
(3)	C and G	E and H
(4)	D and F	D and H

()

22. One of the diagrams below shows how an iron nail can be magnetised. The arrows show the direction of movement of the magnet. Which of the following iron nails will be magnetised?



()

23. Jenna has four types of nails, E, F, G and H. The table shows the materials that the nails are made of.

Type of nails	E	F	G	H
Material	iron	steel	aluminium	copper

She places two types of nails together as shown below and tries to separate them by using a magnet.

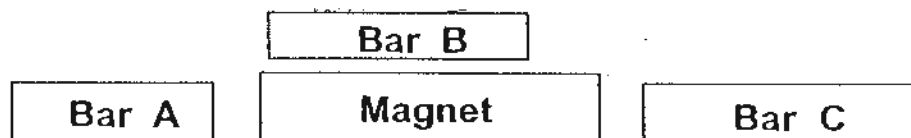
- A: E and F
- B: F and G
- C: F and H
- D: G and H

For which of these groups was she able to separate the nails easily by using a magnet?

- (1) A and B
- (2) A and C
- (3) B and C
- (4) B and D

()

24. Sabrina placed three metal bars near a magnet as shown below. Bar A and Bar C moved towards the magnet, but Bar B remains stationary.



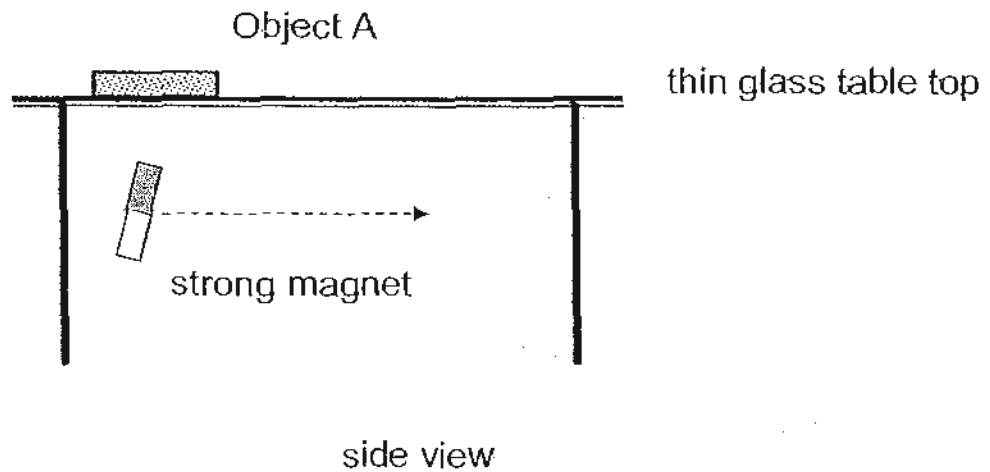
Which of the following statements is/ are definitely correct?

- A: Bar A and Bar C are magnets.
- B: Bar B cannot be made into a magnet.
- C: The three metal bars are made of magnetic materials.

- (1) A only
- (2) B only
- (3) A and C only
- (4) A, B and C

()

25. Jodi placed a strong magnet under Object A and dragged it across the thin top of a glass table in the direction as shown in the set-up below.



Jodi repeated the experiment with three other objects, B, C and D, one at a time. She recorded her results in the table below. A tick (✓) is used to show the observation that she had made for each object.

Objects	Moved with the magnet	Did not move with the magnet
A	✓	
B		✓
C	✓	
D	✓	

Which of the following objects has been correctly matched with the material it is made from?

	Object	Material
(1)	A	iron
(2)	B	steel
(3)	C	copper
(4)	D	aluminium

()

For Questions 26 to 30, please refer to Booklet K.

End of Section A

17

Pei Chun Public School
Continual Assessment – 2010
Science
Primary 3

Name: _____ ()

Class: Pr. 3 ()

Date: 26 August 2010

Time: 1 h 30 min

Science Teacher: _____

Parent's signature: _____

Section A	60
Section B	30
Booklet K (excludes MCQs)	10
Total	100

Section B (30 marks)

For questions 31 to 40, write your answers in the spaces provided.

31. (a) Write down the characteristic of living things that is being described in (i) and (ii). (2 m)

Example: A plant grows in the direction of sunlight.

Characteristic: Living things respond to changes around them.

- (i) A dead bird was found on the ground.

- (ii) A shark moved through the water.

- (b) Write down either "True" or "False" in the boxes provided. (1 m)

- (i) A plant is not a living thing because it cannot move from place to place on its own.

- (ii) A plant needs only water and food to survive.

32. Study the animals in the box below.

Monkey	Lion	Chicken	Parrot
Eagle	Bat	Penguin	Elephant

(a) Classify these animals into two equal groups. (2 m)

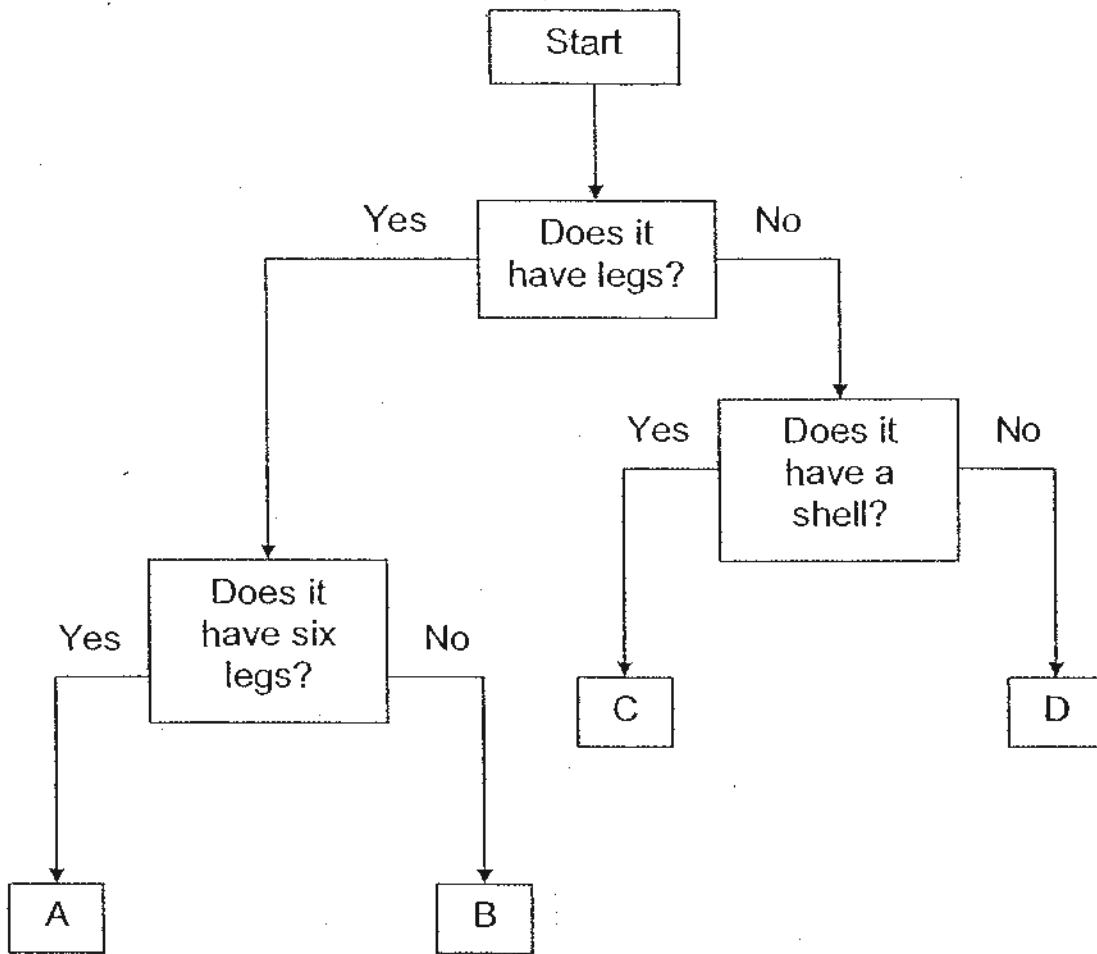
Animals	
Group 1	Group 2

(b) Provide a suitable heading for each group. (2 m)

Group 1 : _____

Group 2 : _____

33. The diagram shows a flow chart which can be used to classify animals.



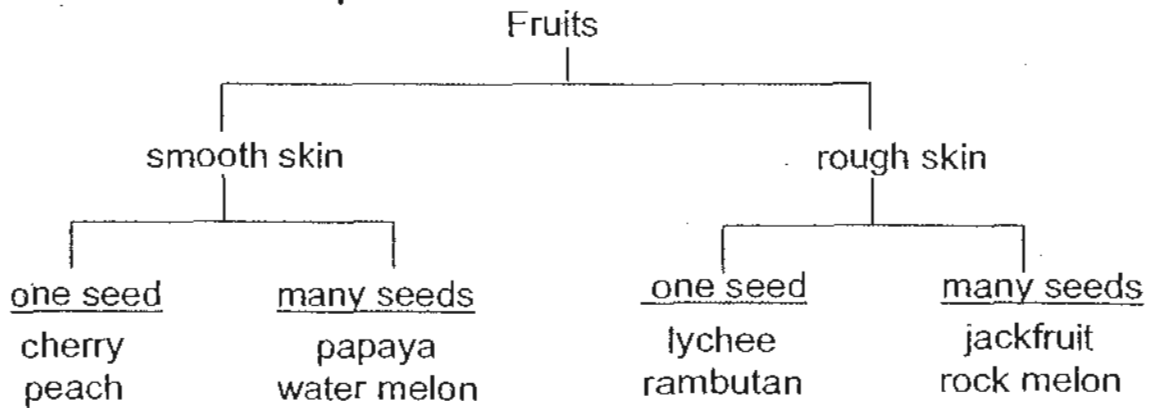
(a) Based on the chart, describe one difference between Animal A and Animal D. (1 m)

(b) Write down the letter (A, B, C or D) that represents the animal in (i) and (ii). (1 m)

(i) snail _____

(ii) spider _____

34. Study the classification chart below.



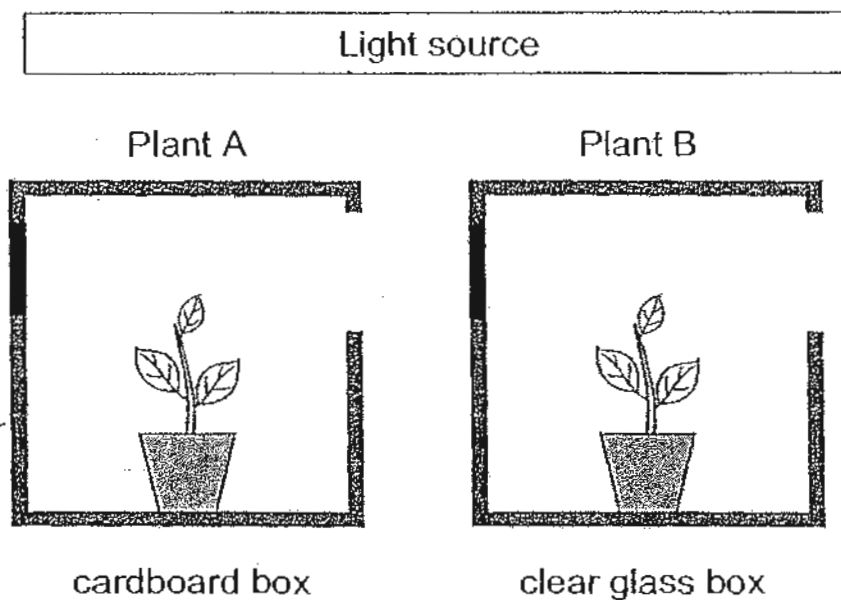
(a) Based on the chart, which fruit(s) has/ have rough skin and more than one seed? (1 m)

(b) Write down two differences between lychee and papaya. (2 m)

Difference 1: _____

Difference 2: _____

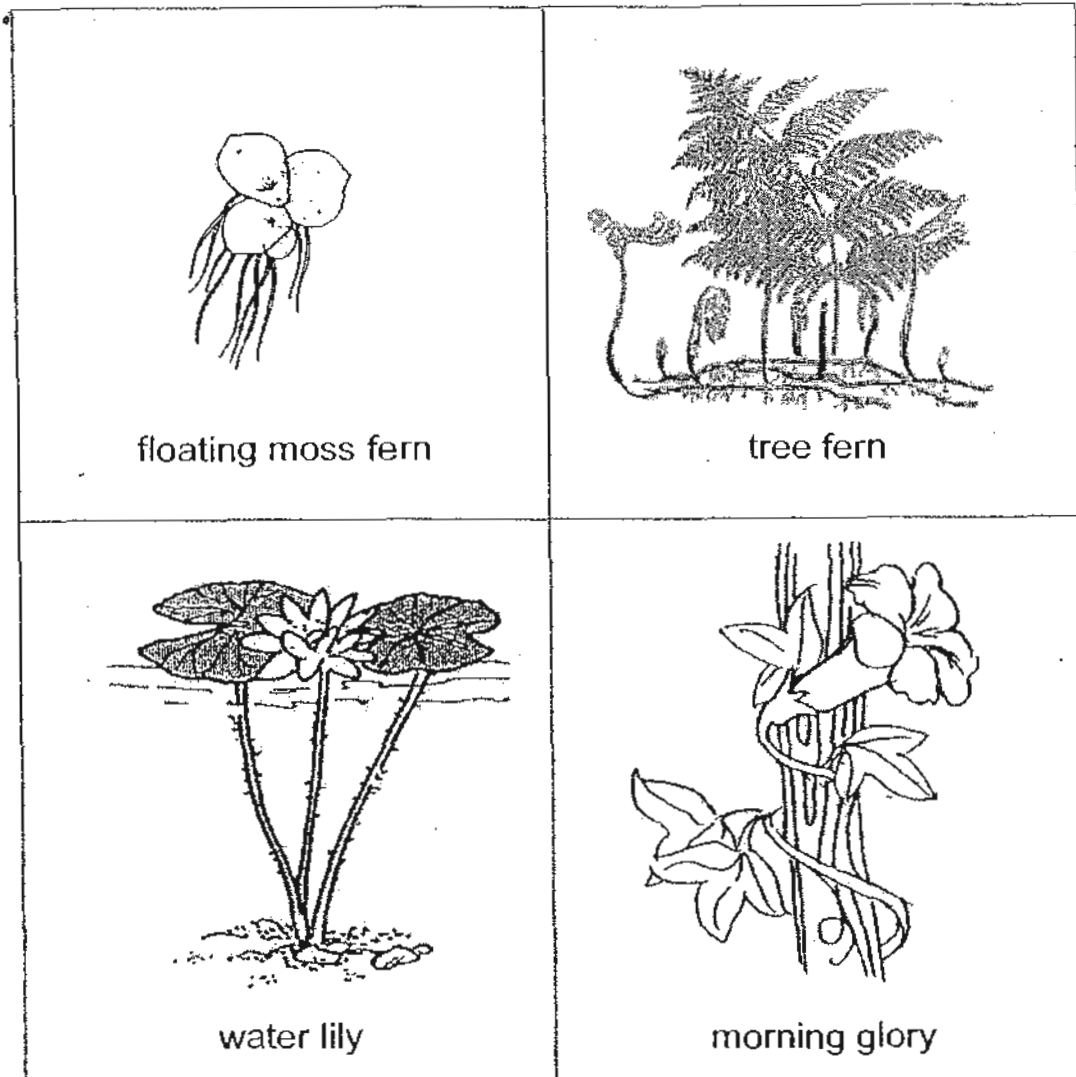
35. Kenny set up the experiment shown below under a light source. The plants were watered daily.



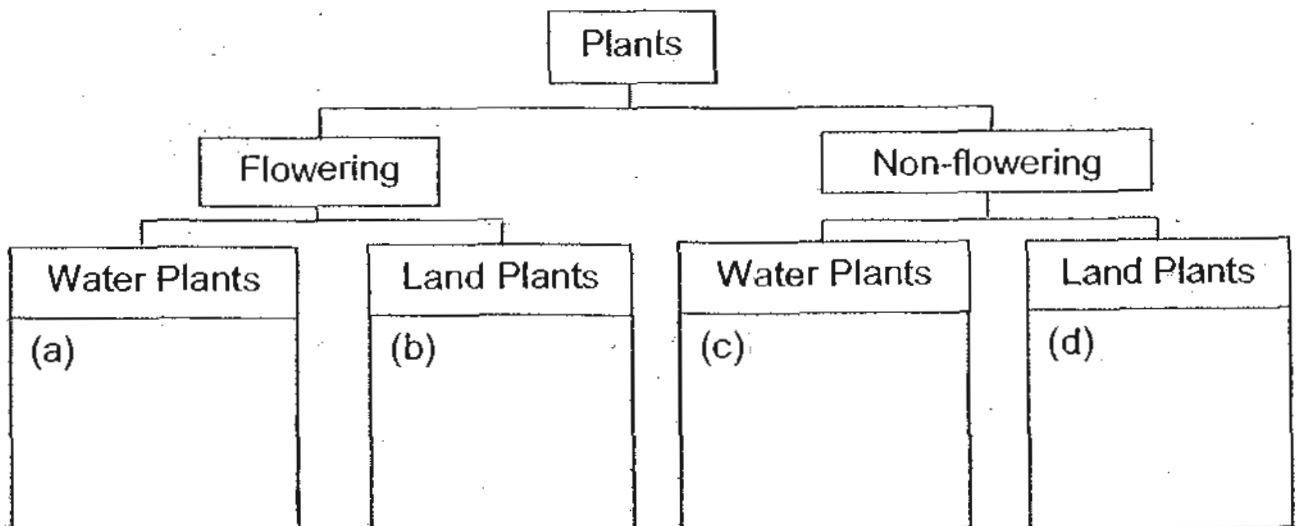
- (a) After two weeks, what would Kenny observe? (1 m)

- b) Why did Plant A and Plant B grow in a different way? (2 m)

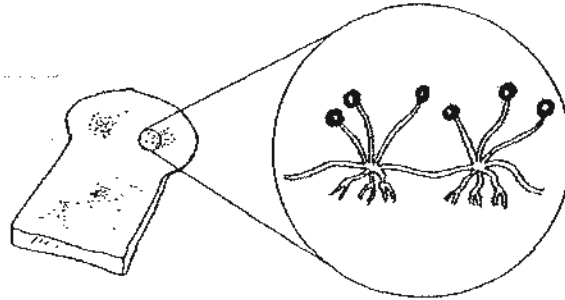
36. Study the diagrams of the four plants below.



Classify the four plants in the flow chart below by filling in their names in the boxes. (2 m)



37. Meimei left a slice of bread in the kitchen. After a few days, she noticed that dark brown patches of mould started to appear on the bread.



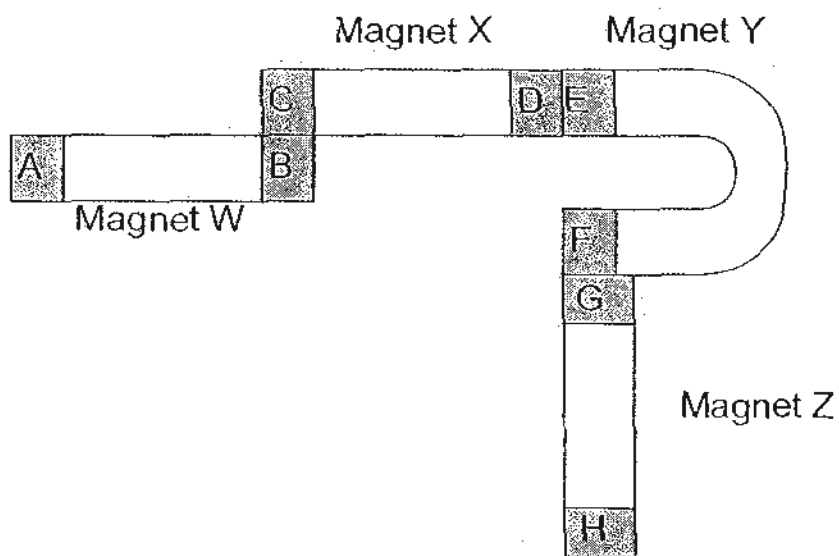
Magnified section

- (a) Bread mould and mushroom belong to the same group of living things. Which group is this? (1 m)

- (b) How does the bread mould reproduce? (1 m)

- (c) How is the bread mould different from a plant in the way it obtains its food? (1 m)

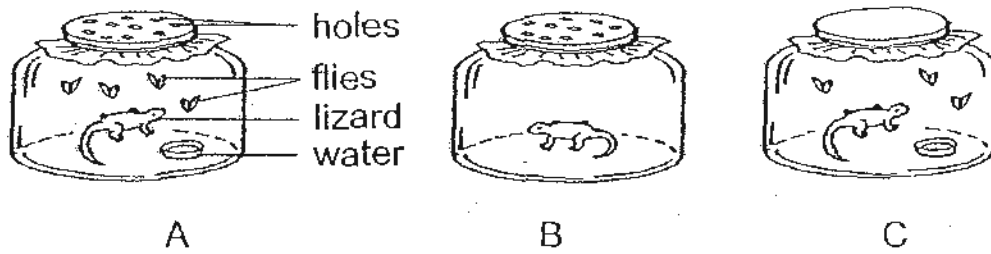
38. Four magnets, W, X, Y and Z, are arranged as shown in the diagram below.



Read the following statements. Put a tick (✓) in the correct boxes to show whether the following statements about the magnets are "True", "False" or "Impossible to tell". (3 m)

	Statement	True	False	Impossible to tell
(a)	Poles A and F are unlike poles.			
(b)	Poles C and H are like poles.			
(c)	Poles B and E will attract each other. <i>unlike</i>			
(d)	Poles D and G will repel each other.			
(e)	Pole A is the South pole of the magnet.			
(f)	Pole G is the North pole of the magnet.			

39. The set-ups below show three lizards in separate jars.



(a) Based on the above set-ups, which lizard will live the longest? (1 m)

(b) Explain your answer in (a). (1 m)

(c) What could be done to the other two set-ups to ensure that the lizards could live for a longer time? (2 m)

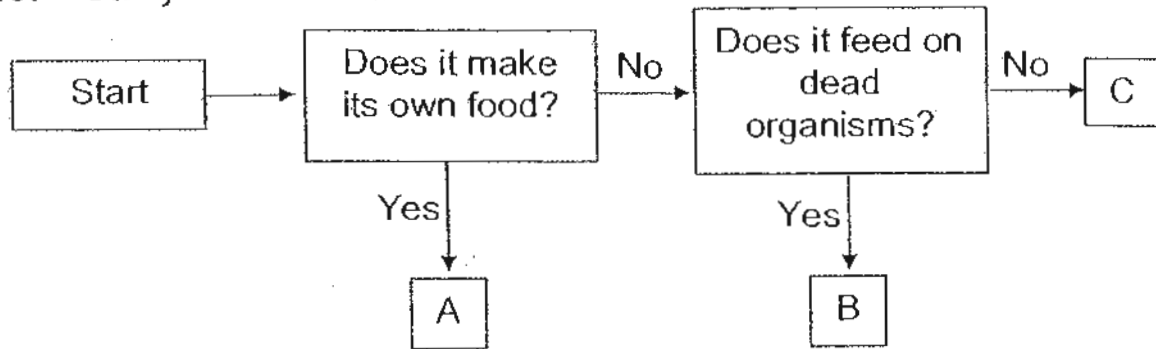
Set-up _____

What could be done : _____

Set-up _____

What could be done : _____

40. Study the flow chart below.



- (a) Study the organism below. Write down the letter (A, B or C) that represents the organism in the box below. (1 m)



- (b) Explain how the organism in (a) is similar to a mushroom. (2 m)

For questions 41 to 44, please refer to Booklet K.

End of Section B

ANSWER SHEET

EXAM PAPER 2010

SCHOOL : PEI CHUN PRIMARY
SUBJECT : PRIMARY 3 SCIENCE

TERM : CA2

Q1	Q2	Q3	Q4	Q5	Q6	Q7	Q8	Q9	Q10	Q11	Q12	Q13	Q14	Q15	Q16	Q17
4	4	3	4	1	3	4	3	2	4	1	2	2	3	3	4	1

Q18	Q19	Q20	Q21	Q22	Q23	Q24	Q25
3	2	2	1	2	3	2	1

- 31)a)i)Living things can die. ii)Living things can move on their own.
b)i)F ii)F
- 32)a)Group 1: Monkey, Lion, Bat, Elephant Group 2: Eagle, chicken, Penguin, Parrot
b)Group 1 : Mammals Group 2: Birds
- 33)a)Animal A has legs but Animal D does not have legs. b)i)C ii)B
- 34)a)Rock melon and jackfruit.
b)1:Lychee has one seed while papaya has many seeds.
2:Lychee has a rough skin while papaya has a smooth skin.
- 35)a)Plant A would grow towards the opening of the box but plant B would grow upright.
b)It is because Plant A only the sunlight can only pass through the small little gap while all the light can pass through the whole clear glass box.
- 36)a)Water Lily b)Morning glory c)Floating moss fern d)Tree Fern
- 37)a)Fungi b)The mould reproduce by spores
c)The plant can makes its own food while the mushroom can't
- 38)a)T b)F c)T d)F e)impossible f)Impossible
- 39)a)The lizard in set-up A.
b)It is because the lizard in container A has air food and water.
c)Set-up B
Add flies and water.
Set-up C
Put some holes on the cover.
- 40)a)B
b)They do not make their own food.