



Pei Hwa Presbyterian Primary School  
First Semestral Assessment - 2010  
Science  
Primary 3  
(Time: 1 hour 30 minutes)

Booklet A	/ 60 marks
Booklet B	/ 40 marks
Total	/ 100 marks

Name: \_\_\_\_\_

Class: \_\_\_\_\_ ( )

Date: \_\_\_\_\_

Parent's Signature: \_\_\_\_\_

**BOOKLET A (30 X 2 = 60 MARKS)**

For each question from 1 to 30, four options are given. Only one of them is correct. Make your choice (1, 2, 3 or 4). Shade the correct oval (1, 2, 3 or 4) on the Optical Answer Sheet.

1. Rachel made some observations about plants that are reproduced by spores. She wrote down the following statements.

- A They have chlorophyll.
- B They are known as fungi.
- C They do not have flowers.

Which of the following statements she made are correct?

- (1) A and B only
- (2) A and C only
- (3) B and C only
- (4) A, B and C

2. Below is a table which shows some properties of materials P, Q, R and S.

Material	Breaks easily	Gets hot easily	Waterproof
P	✓	✓	X
Q	✓	X	✓
R	X	✓	✓
S	X	X	X

: Shows the property

: Does not show the property

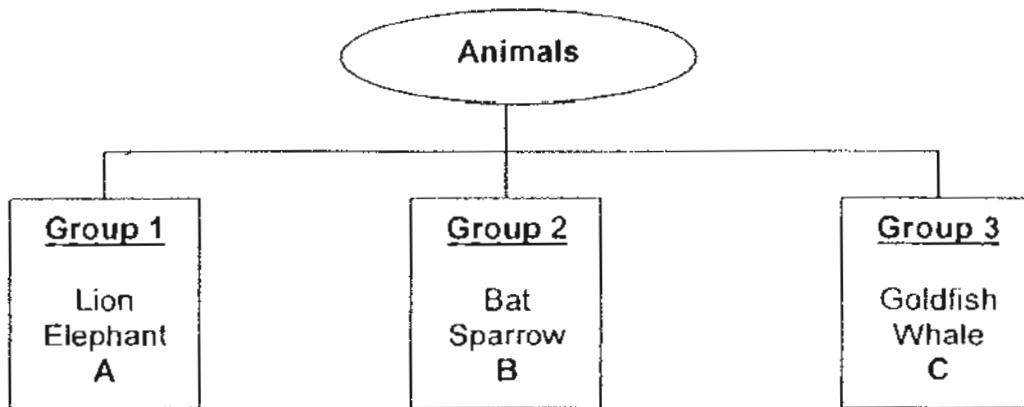
Which of the material is most suitable for making a pot?

- (1) P
- (2) Q
- (3) R
- (4) S

3. Samuel wrote his observations about fungi in his journal. Which one of the following statements he wrote is **false**?

- (1) Some fungi are edible.
- (2) Fungi are living organisms.
- (3) Fungi feed on dead plants and animals.
- (4) Fungi can only be seen using a microscope.

4. Study the classification table below.



Which of the following can A, B, and C be?

	A	B	C
<del>(1)</del>	Leopard	Snake	Dolphin
<del>(2)</del>	Eel	Crow	Seahorse
<del>(3)</del>	Cat	Eagle	Shark
<del>(4)</del>	Shark	Ostrich	Walrus

5. Jason put a pot of plant in a sealed glass container near a window. A week later, he discovered that the plant had wilted. Which one of the following explained why the plant wilted?

- (1) There is no light.
- (2) There is no food for the plant.
- (3) There is no water for the plant.
- (4) There is no fertilizer for the plant.

6. Which one of the following is made up of one type of material only?



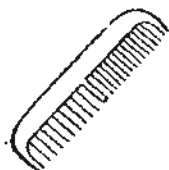
(1) Leather belt



(2) kettle



(3) spectacles



(4) comb

7. Which one of the following groups consists of only living things?

- (1) fire , grass, spider
- (2) earthworm, soil, moss
- (3) butterfly, bacteria, lion
- (4) dog, a can of baked beans, seaweed

8. P has the following properties :

- Can be useful or harmful
- Does not contain chlorophyll
- Can only be seen under a microscope

What can P be?

- A Puffball
- B Bacteria
- C Mushroom
- D Bracket fungi

- (1) B only
- (2) A, B or C only
- (3) B, C or D only
- (4) A, B, C or D

9. The table below shows the characteristics of four organisms P, Q, R and S.

	P	Q	R	S
Can fly?	No	No	No	No
With hair?	Yes	No	Yes	Yes
Lay eggs?	Yes	Yes	Yes	No
Live in water?	No	Yes	Yes	Yes

Which organism represents the platypus?

- P
- Q
- R
- S

10. Which of the following statements about plants is true?

- (1) All flowering plants are non-poisonous.
- (2) Plants need only air and water to survive.
- (3) Non-flowering plants cannot make their own food.
- (4) Some flowering plants flower only certain times of the year.

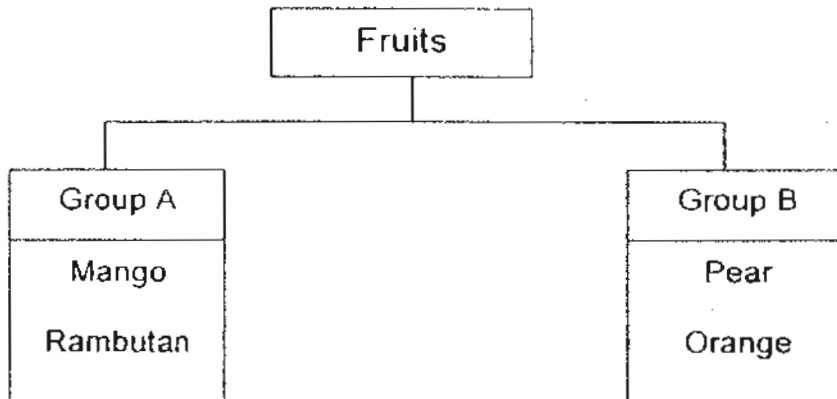
11. Mrs See did a scratch test with four hard objects and recorded the observations in the table below.

Objects	Observations
J	Made a scratch mark on M
K	Made a scratch mark on J and M
L	Made a scratch mark on J, K and M
M	Did not make a scratch mark on any objects

Based on the observations above, arrange the objects from the hardest to the softest.

- (1) K, J, M, L
- (2) M, J, K, L
- (3) L, M, J, K
- (4) L, K, J, M

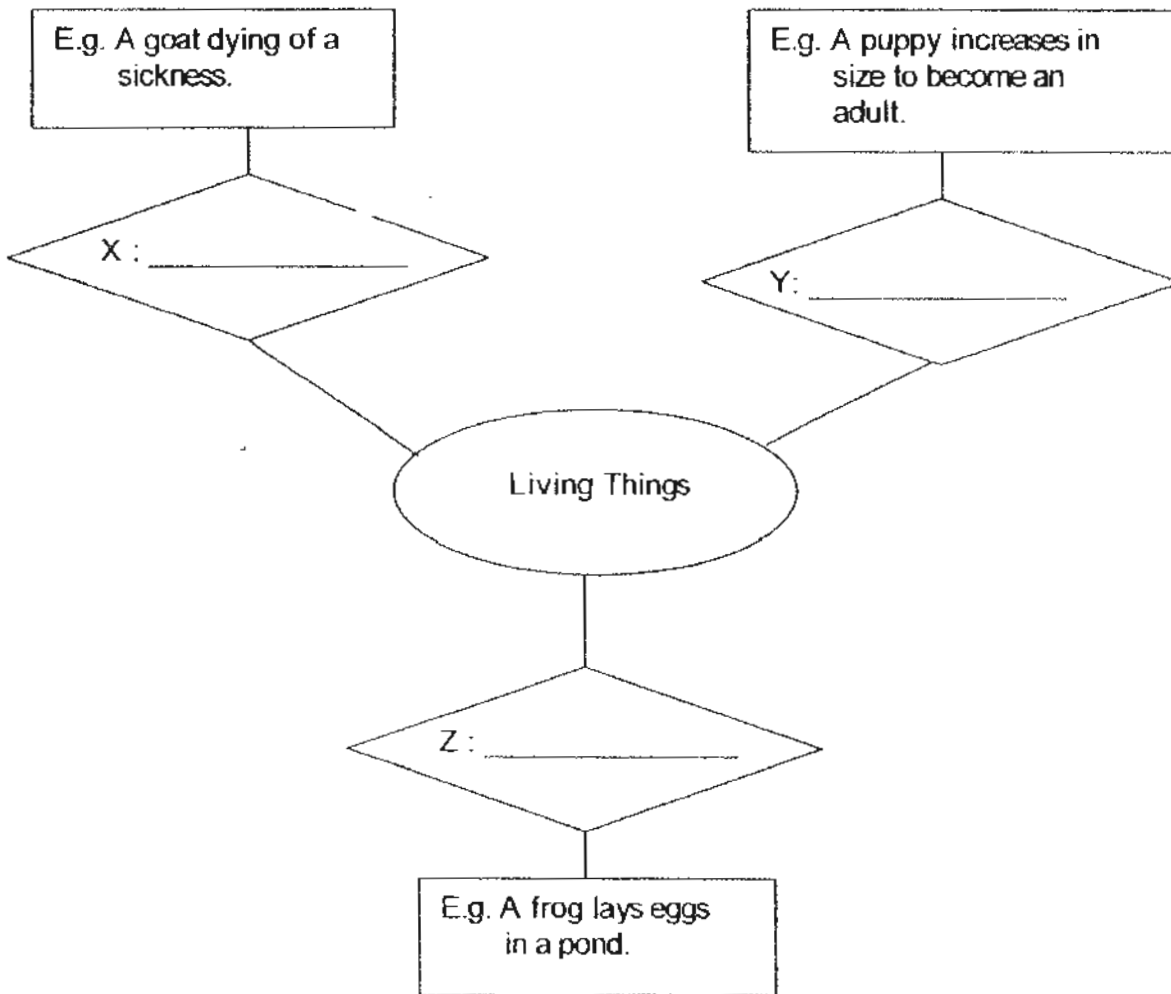
12. Study the chart below.



How are the fruits grouped?

	Group A	Group B
(1)	juicy	dry
(2)	edible	inedible
(3)	one seed	few seeds
(4)	rough skin	smooth skin

13. Audrey drew a concept map showing the characteristics of living things as indicated by X, Y and Z.



Which one of the following can be placed in X, Y and Z?

	X	Y	Z
(1)	can die	can grow	can reproduce
(2)	can grow weak	can grow fat	can grow
(3)	can respond to changes	can eat	can respond to changes
(4)	need air, food and water	can grow	can reproduce

14. Janice made the following observations about a cricket.

- A It has wings
- B It has six legs
- C It has antennae
- D It has three body parts

Which statements tell her that a cricket is an insect?

- (1) A, B and C only
- (2) A, C and D only
- (3) B, C and D only
- (4) All of the above

15. Felicia put a slice of bread in a box. After a week, she observed something black growing on the bread. What has grown on the bread?

- (1) yeast
- (2) mould
- (3) mushroom
- (4) bracket fungi

16. Gary described a material as follows.

- |  |
|--|
| <ul style="list-style-type: none"><li>• Opaque</li><li>• Breaks easily</li><li>• Is not a good conductor of heat</li></ul> |
|--|

Which one of the following material has the properties given above?

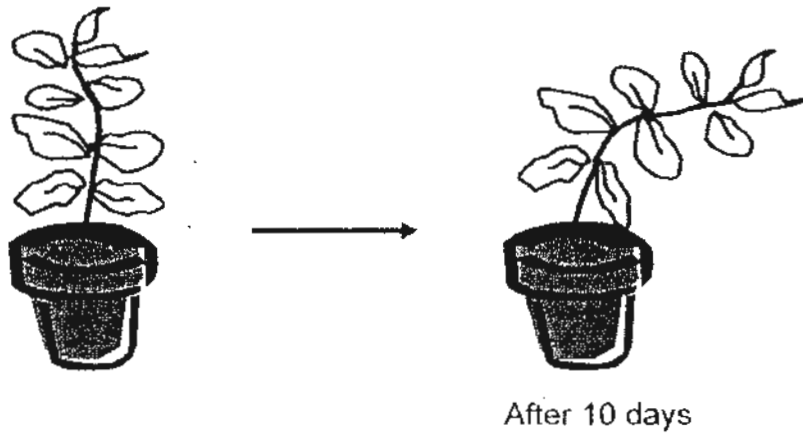
- (1) Iron
- (2) Glass
- (3) Rubber
- (4) Ceramic

17. Fish have fins. What are the fins used for?

- A Swimming
- B Balancing
- C Breathing
- D Protection

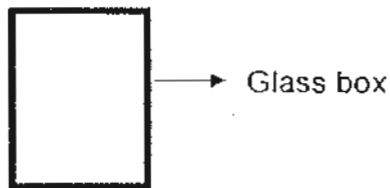
- (1) A and B only
- (2) A, B and C only
- (3) B, C and D only
- (4) All of the above

18. Megan carried out an experiment to show that plants respond to sunlight. The diagram below show how the plant looked like after ten days.

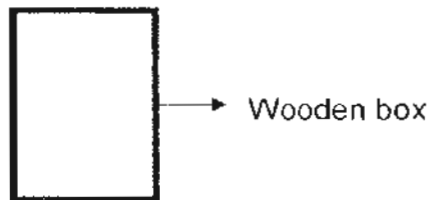


Which of the following set-ups did she use to put her plant in for her experiment?

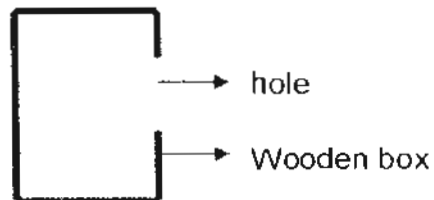
(1) Set-up A



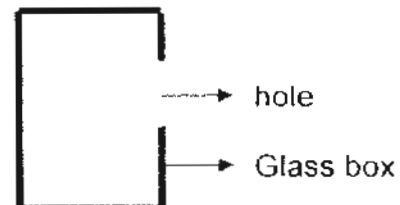
(2) Set-up B



(3) Set-up C



(4) Set-up D



19. Which of the following statements show that a living thing responds to changes in its environment?

- A A cat giving birth to a litter of kittens.
- B A fire spreads when there is a strong wind.
- C A dog hanging out its tongue on a hot day.
- D A tortoise gets into its shell when it is touched.

- (1) A and B only
- (2) C and D only
- (3) A, C and D only
- (4) B, C and D only

20. Which of the following shows the correct comparison between the mould and a fern?

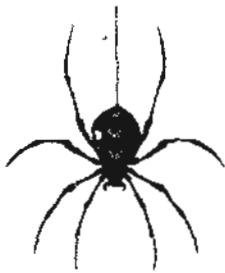
	Similarity	Difference
(1)	Both are fungi.	Mould feeds on decaying plants and animals but the fern makes its own food.
(2)	Both are non-flowering plants.	Mould grows only in damp and dark places but the fern needs sunlight to grow.
(3)	Both reproduce by spores.	Mould does not make its own food but a fern does.
(4)	The spores of the fern and the seeds of the mould are carried by wind.	Mould reproduces by seeds but the fern reproduces by spores.

21. Alice went on a field trip and caught a bug. She observed the animal closely and recorded her observations.

1	six legs
2	long body
3	has wings
4	small head
5	two small eyes
6	two long antennae

Which one of the following animals is most likely what Alice had caught?

(1)



(2)



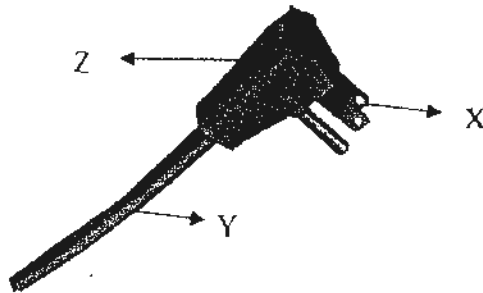
(3)



(4)



22. The figure below shows a 3-pin plug.



Which of the following materials are used to make the parts labeled X, Y and Z?

	X	Y	Z
(1)	Metal	Plastic	Glass
(2)	Plastic	Rubber	Ceramic
(3)	Wood	Plastic	Metal
(4)	Metal	Rubber	Plastic

23. In which one of the following groups would you place a plastic fork?

Group 1	Group 2	Group 3	Group 4
Stamp	Cup	Tyre	Sock
Envelope	File	Eraser	Dress
Newspaper	Chair	Rubber band	Towel

- (1) Group 1
- (2) Group 2
- (3) Group 3
- (4) Group 4

24. A container rolled down a flight of stairs but did not break. Which of the following is the container likely to be made of?

- A Tin
- B Clay
- C Glass
- D Wood

- (1) A and C only
- (2) A and D only
- (3) B and C only
- (4) B and D only

25. Which one of the following animals gives birth to young alive?



(1) walrus



(2) butterfly

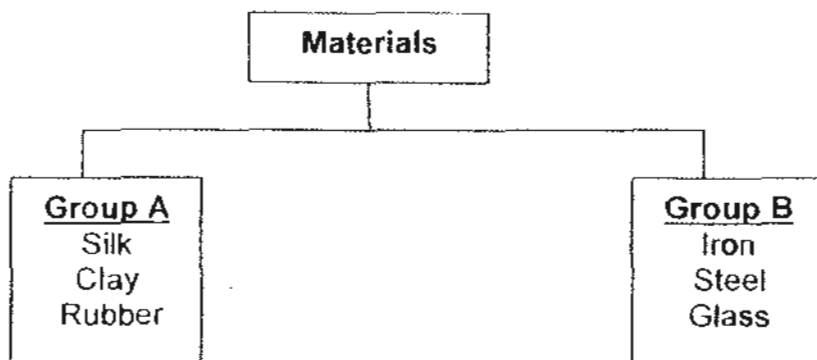


(3) spiny anteater



(4) penguin

26. The table below shows how some materials are classified into two groups.



How are the above materials classified? They are classified according to \_\_\_\_\_

- (1) ~~whether they are fragile~~
- (2) ~~whether they are flexible~~
- (3) ~~whether they can be stretched~~
- (4) ~~whether they can absorb water~~

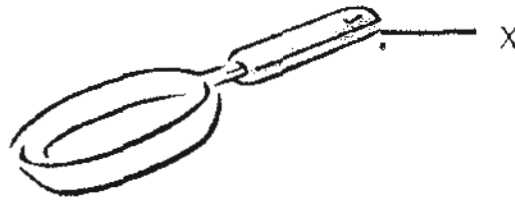
27. Study the classification table of living things in Groups P and Q.

Group P	Group Q
Algae	Lotus
Mosquito fern	Lantana
Dragon scale fern	Hibiscus

Which of the following is the most suitable headings for the above classification?

	Group P	Group Q
(1)	Water Plants	Land Plants
(2)	Cannot make food	Can make food
(3)	Non-flowering plants	Flowering plants
(4)	Reproduce from seeds	Reproduce from spores

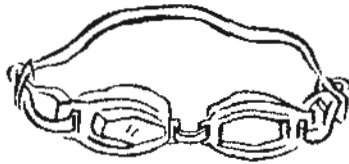
28. The picture below shows a frying pan.



Which of the following identifies correctly the material and its properties used to make Part X?

	Material	Properties used to make Part X
(1)	Metal	Hard and gains heat easily
(2)	Glass	Hard and is waterproof
(3)	Rubber	Light and flexible
(4)	Plastic	Light and does not gain heat easily

29. Study the diagram of a pair of goggles below.



Which materials would be the most suitable to make a pair of goggles?

- (1) glass and cloth
- (2) plastic and wood
- (3) glass and rubber
- (4) plastic and rubber

30. Ryan carried out an experiment to find out the strengths of three types of plastic bags. The results of his experiment are recorded below.

Bag	Number of iron cubes each bag could hold before it broke
E	19
F	12
G	6

Based on the results above, which of the following statements best describes the plastic bags?

- (1) Bag G is the strongest of all.
- (2) Bag F breaks the most easily.
- (3) Bag E is stronger than Bag F.
- (4) All the three bags are equally strong.



Pei Hwa Presbyterian Primary School  
Semestral Assessment - 2010  
First Science  
Primary 3  
(Time: 1 hour 30 minutes)

Booklet A	/ 60 marks
Booklet B	/ 40 marks
Total	/ 100 marks

Name: \_\_\_\_\_

Class: \_\_\_\_\_ ( )

Date: \_\_\_\_\_

Parent's Signature: \_\_\_\_\_

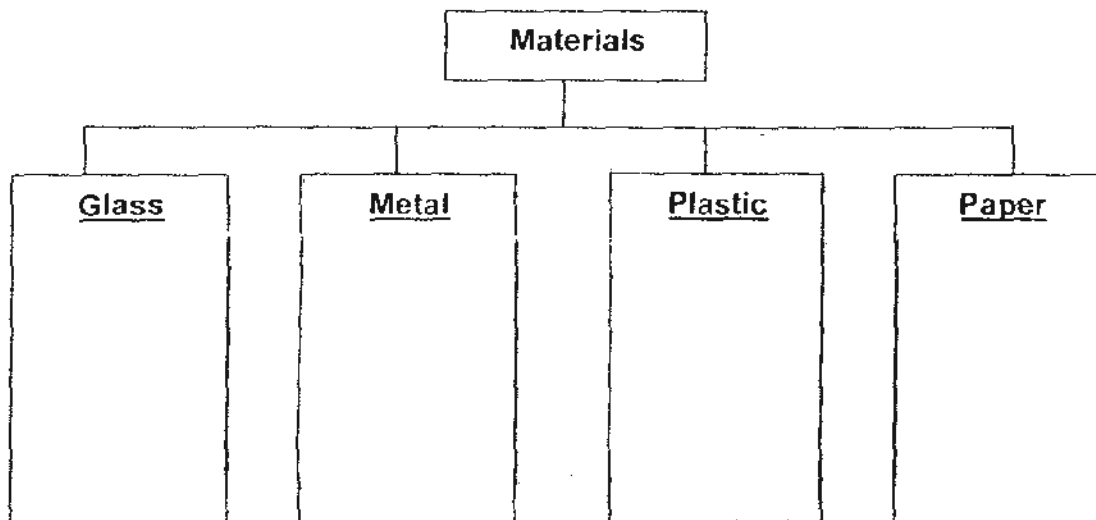
**Booklet B (40 marks)**

Read questions 31 to 44, write your answers in this booklet.

The number of marks available is shown in brackets [ ] at the end of each question or part question.

31. Classify the things in the box below according to the type of materials they are made of. [3]

Ganned drink	Drinking Straw	Book
Mirror	Mineral water bottle	Milk Carton



32. Four pupils made the following statements about mammals.

- Ada : All mammals live on land.
- Benny : All mammals feed their young with milk.
- Charlie : All mammals give birth to their young alive.
- David : All mammals have either hair or fur as their body coverings.

(a) Who made the wrong statements about mammals? [1]

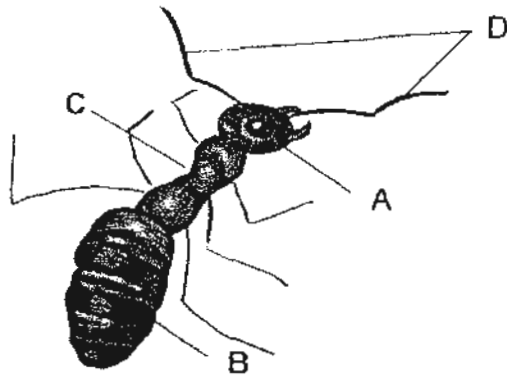
\_\_\_\_\_

(b) Explain your answer in part (a) [2]

\_\_\_\_\_  
\_\_\_\_\_  
\_\_\_\_\_

33 The picture below shows the three body parts of an insect.

(a) Complete the picture by drawing the six legs of the insect. [2]



(b) Name the parts of the insect labeled A, B, C and D. [2]

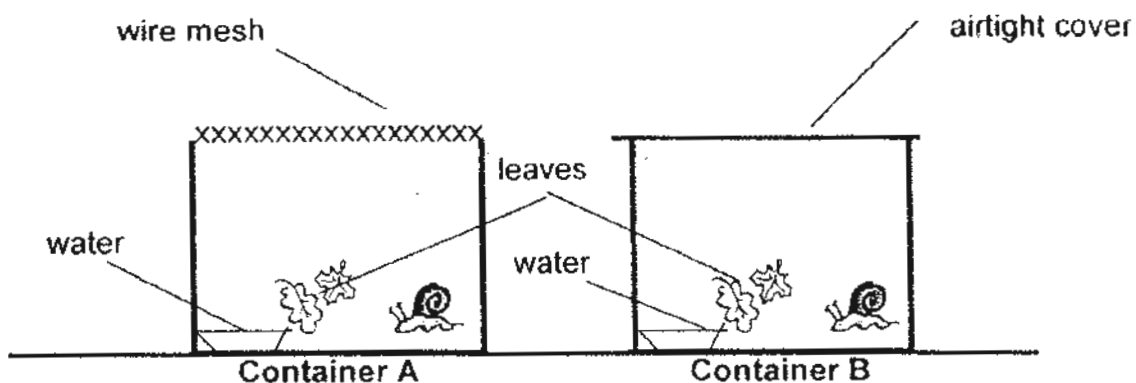
A : \_\_\_\_\_

B : \_\_\_\_\_

C : \_\_\_\_\_

D : \_\_\_\_\_

34. Ahmad conducted an experiment using the set-ups shown below. He put a snail in each of the container.



(a) What would happen to the snail in each container after a week? [1]

---

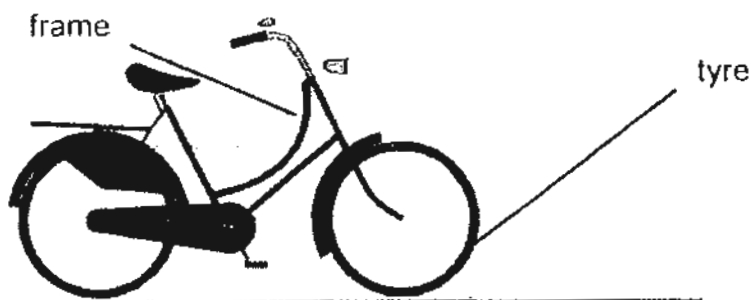
(b) What did the above experiment show? [1]

---



---

35. The picture below shows a bicycle.



(a) What material would you choose to make the frame of the bicycle? [1]

---

(b) What material is used to make the tyres? Why? [2]

---



---

36. Judy was on a field trip with her class when she saw two living things shown below.



She told her friends that both belong to the same group of living things.

(a) Do you agree with her? Why?

[1]

---

Her friend told her that there are differences between them.

(b) State ONE difference between the fern and the mushroom. (Do not compare size, shape and colour).

[1]

37. Four pupils made some statements about bacteria.

Ashley : Bacteria are micro-organisms.

Brandon : Bacteria comes in all shapes and sizes.

Charlene : All bacteria are harmful to us.

David : Bacteria found on meat could be destroyed by freezing the meat.

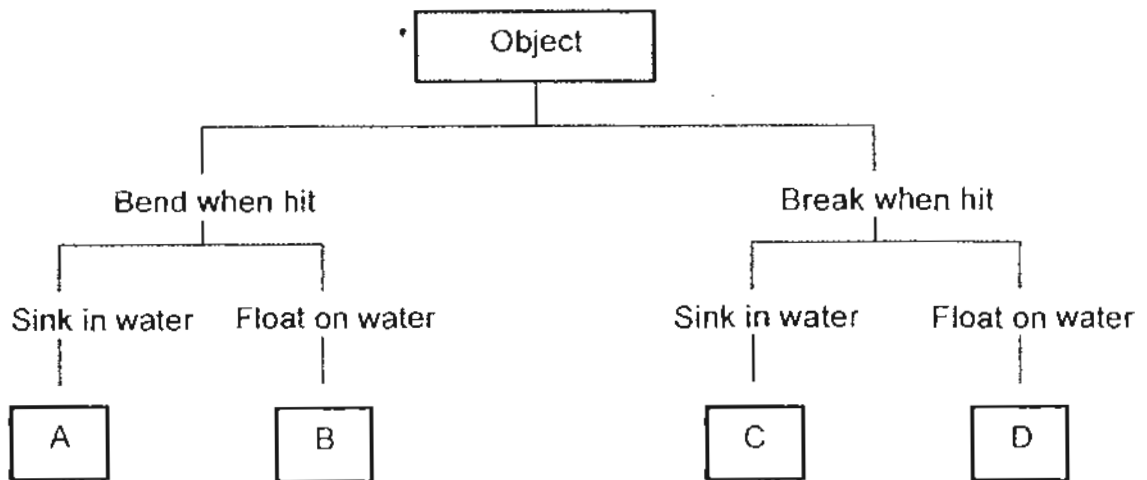
(a) Do you agree with all the statements made by the four pupils? If not, who do you disagree with?

[1]

(b) Bacteria can be used in certain manufacturing process to make certain types of food. Give an example of a type of food which makes use of bacteria.

[1]

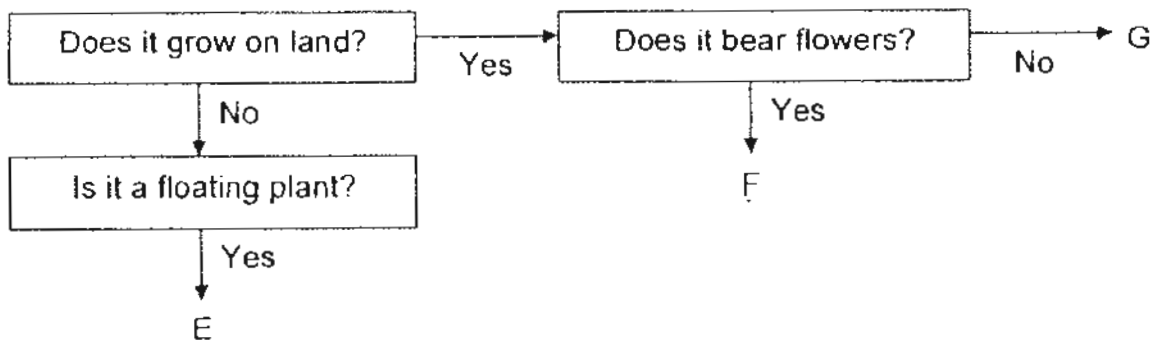
38. Isabelle conducted an experiment by hitting some objects with a hammer and putting them in a tank of water. The results are shown below.



From the results shown above, fill in the blanks with the correct letter (A, B, C or D) that represents each object. [3]

- Cork : \_\_\_\_\_
- Steel ruler : \_\_\_\_\_
- Brick : \_\_\_\_\_

39. The flowchart below shows the characteristics of plants E, F and G.



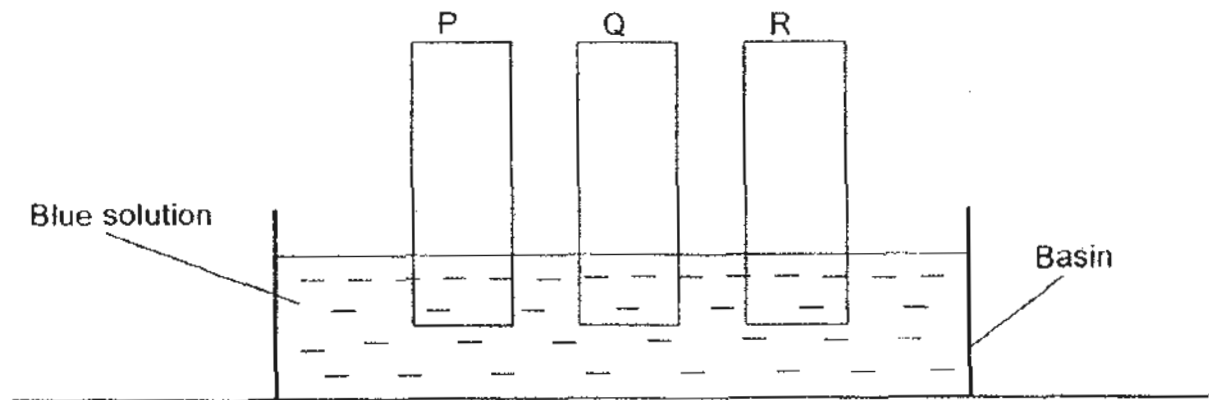
- (a) Based on the information in the flowchart, what are the two characteristics of Plant E? [1]

---

- (b) Which plant represents 'allamanda'? [1]

---

40. Ruth conducted an experiment using 3 types of materials, P, Q and R as shown below. P, Q and R are of identical size and thickness.



10 minutes later, she noticed that 15 cm of Strip P, 6 cm of Strip Q were stained blue and Strip R was not stained by the blue ink.

Based on the above information given, answer the following question.

- (a) What is the difference between the materials, P and Q? [1]

---

- (b) Which material would be most suitable to make a raincoat and a hand towel? [2]

Raincoat : Material \_\_\_\_\_

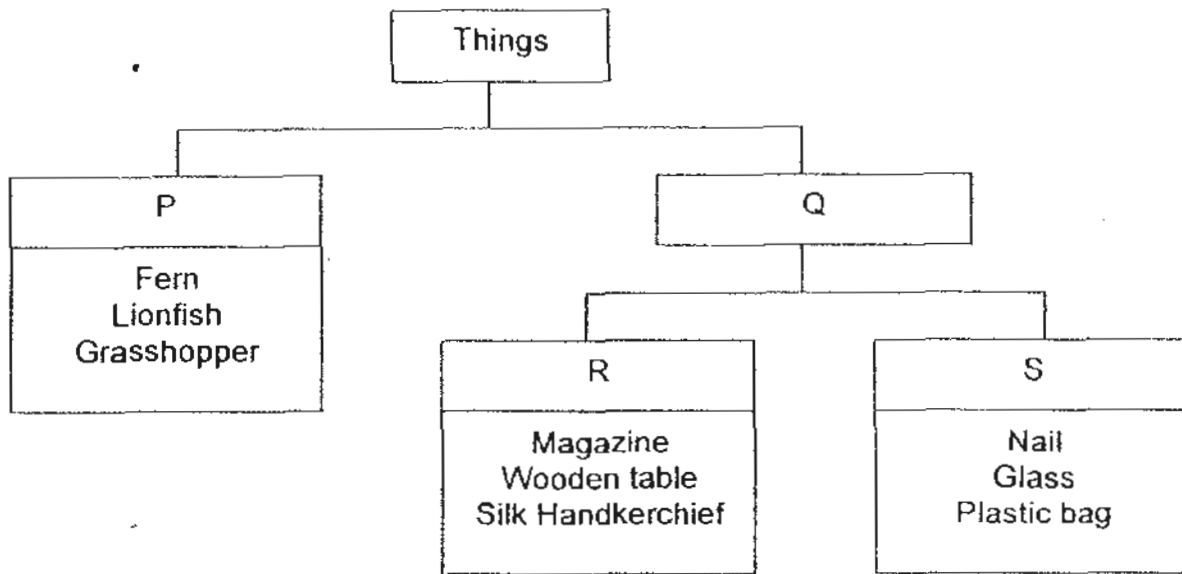
Hand towel : Material \_\_\_\_\_

- (c) Do you think material R can be used to make baby pampers? Explain your answer. [1]

---

---

41. Study the classification chart below.



(a) Give appropriate sub-headings to the above classification chart. [2]

P : \_\_\_\_\_

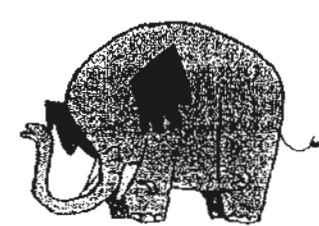
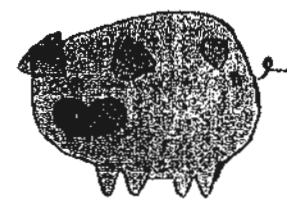
Q : \_\_\_\_\_

R : \_\_\_\_\_

S : \_\_\_\_\_

(b) In which group would you classify a woollen bag? [1]

42. (a) Look at the animals below. Circle the animals that are not mammals. [1]



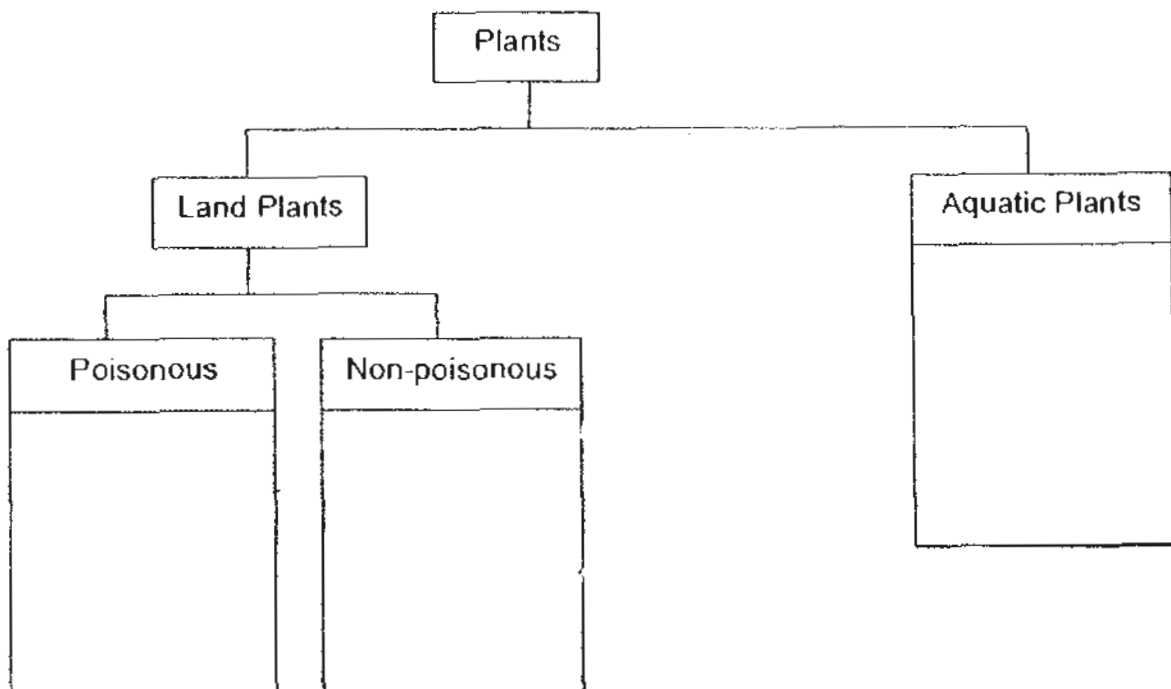
(b) State two common characteristics of all mammals. [2]

(i) \_\_\_\_\_

(ii) \_\_\_\_\_

43. Classify the following plants into the correct box. [4]

<del>ixora</del>	<del>lantana</del>	<del>elodea</del>	<del>orchid</del>
<del>mosquito fern</del>	<del>water lily</del>	<del>pong-pong</del>	<del>dumbean</del>



44. Jessie placed 4 types of plants into 4 identical containers. One of the plants is made of plastic. She filled 3 of the containers with 300ml of water and poured a layer of oil into each of the 3 containers. She recorded the volume of water in each container after one week in the table below. She also observed that one of the plants had wilted.

Container	Volume of water (ml)	
	Day 1	One week later
W	300	265
X	300	300
Y	300	280
Z	0	0

- (a) Which of the following container contained the plant that is made of plastic? [1]

---

- (b) Why was there less water in Containers W and Y after one week? [1]

---

- (c) Which container contained the plant which wilted? What can Jessie conclude about the needs of a living thing from this experiment? [1]

---

End of Paper

# ANSWER SHEET

## EXAM PAPER 2010

SCHOOL : PEI HWA PRIMARY  
SUBJECT : PRIMARY 3 SCIENCE

TERM : SA1

Q1	Q2	Q3	Q4	Q5	Q6	Q7	Q8	Q9	Q10	Q11	Q12	Q13	Q14	Q15	Q16	Q17
2	3	4	3	3	4	3	1	3	4	4	3	1	3	2	4	1

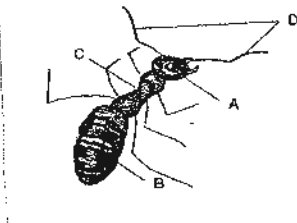
Q18	Q19	Q20	Q21	Q22	Q23	Q24	Q25	Q26	Q27	Q28	Q29	Q30
3	2	3	2	4	2	2	1	2	3	4	4	3

31)a)Glass: Mirror      Metal : Canned , drink  
Plastic : Mineral water bottle, Drinking straw      Paper: Book, Milk carton

32)a)Ada and Charlie.

b)Ada is wrong because the whales and dolphins live in water, and Charlie is wrong because the spiny anteater and the platypus lay eggs.

33)a)



b)A: head      B: abdomen      C: thorax      D: antennae

34)a)Snail A would survive but Snail B will die .

b)Living things need oxygen.

35)a)Metal .

b)Rubber . IT is flexible.

36)a)No. The fern is a plant but the mushroom is a fungi.

b)The fern makes its own food but the mushroom feeds on dead animals and plants.

37)a)No. Charlene and David.  
b)Kimchi.

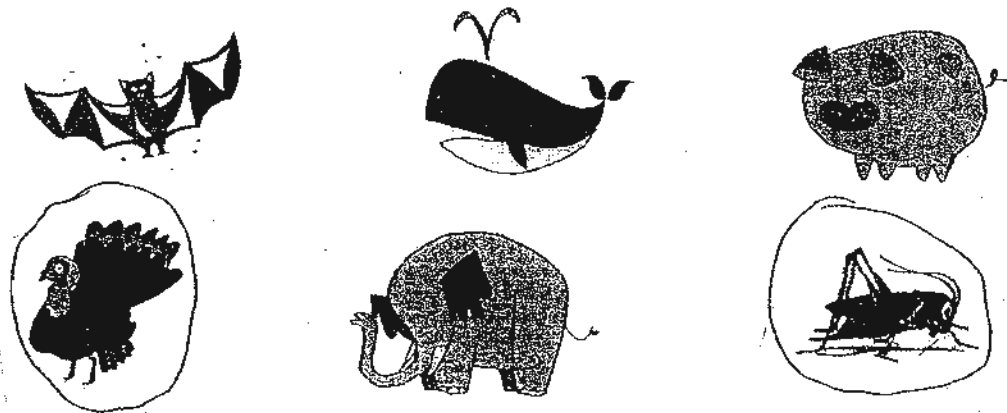
38)Cork: D  
Steel ruler: A  
Brick: C

39)a)It grows in water and is a floating plant.  
b)F.

40)a)P is more absorbent than Q.  
b)R, P  
c)No. It is waterproof and would not be able to absorb urine.

41)a)P: Living things  
Q: Non-living things  
R: Once-alive  
S: Never-alive  
b)R.

42)a)



b)i)They have fur or hair as their body covering.  
ii)The females feed their young with milk.

43)Poisonous: pong pong, dumbcane, lantana  
Non-poisonous: Ixora, orchid  
Aquatic Plants: elodea, mosquito, fern, water lily

44)a)X.  
b)Plants W and Y took in some water.  
c)Z. They need water.